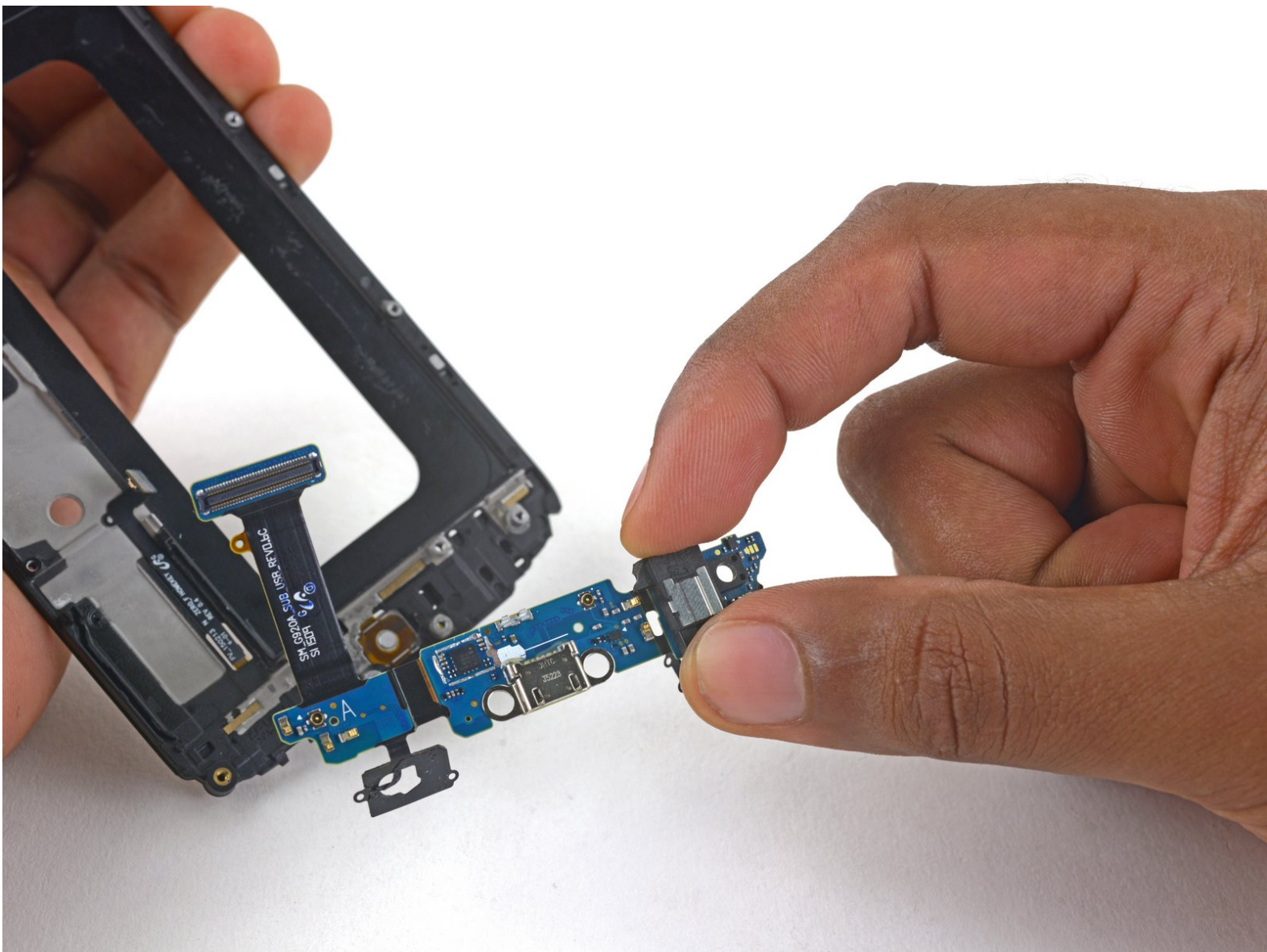




Samsung Galaxy S6 Daughterboard Replacement

Written By: Dozuki System



INTRODUCTION

Use this guide to replace the daughterboard on a Samsung Galaxy S6. The daughterboard is home to the headphone jack, LED soft buttons, and the USB charging port. If you're having charging issues or your aux port isn't working, replacing the daughterboard is a good place to start.

This guide involves removing the rear glass. Removing the rear glass destroys the adhesive holding it in place. Follow [this guide](#) to reinstall the rear glass.



TOOLS:

- [Heavy-Duty Suction Cups \(Pair\)](#) (1)
- [iOpener](#) (1)
- [Phillips #00 Screwdriver](#) (1)
- [Spudger](#) (1)
- [SIM Card Eject Tool](#) (1)
- [iFixit Opening Picks set of 6](#) (1)



PARTS:

- [Galaxy S6 Charging Daughter Board \(Verizon\)](#) (1)
- [Galaxy S6 Charging Daughter Board \(AT&T\)](#) (1)
- [Galaxy S6 Charging Daughter Board \(Sprint\)](#) (1)
- [Galaxy S6 Charging Daughter Board \(T-Mobile\)](#) (1)

Step 1 — Daughterboard



- Insert a paper clip or SIM eject tool into the hole in the SIM card slot on the power button side of the phone.
- Press to eject the SIM card tray.

⚠ Don't press too hard or you may damage the SIM card tray.



Step 2



- Remove the SIM card tray from the phone.

Step 3



-  We recommend that you clean your microwave before proceeding, as any nasty gunk on the bottom may end up stuck to the iOpener.
- Place the iOpener in the center of the microwave.
-  For carousel microwaves: Make sure the plate spins freely. If your iOpener gets stuck, it may overheat and burn.

Step 4



- Heat the iOpener for **thirty seconds**.
- Throughout the repair procedure, as the iOpener cools, reheat it in the microwave for an additional thirty seconds at a time.

- ⚠ Be careful not to overheat the iOpener during the repair. Overheating may cause the iOpener to burst.
- ⚠ Never touch the iOpener if it appears swollen.
- ⚠ If the iOpener is still too hot in the middle to touch, continue using it while waiting for it to cool down some more before reheating. A properly heated iOpener should stay warm for up to 10 minutes.

Step 5



- Remove the iOpener from the microwave, holding it by one of the two flat ends to avoid the hot center.

⚠ The iOpener will be very hot, so be careful when handling it. Use an oven mitt if necessary.

Step 6



- ⓘ Place the phone facedown.
- ⓘ If your glass is shattered, put packing tape over the entire panel to hold it together during the removal process.
- Lay the iOpener over the panel for about 60 seconds to loosen the adhesive around the edge of the glass.
- Shift the iOpener to heat the remaining section of the panel for another 60 seconds.

Step 7



- Attach a heavy-duty suction cup to the lower half of the rear glass panel.
- Secure the suction cup by raising the hinged handle and flipping the latch to clamp both handles in place.

Step 8



- ① The following steps involve using an opening pick to separate the rear panel from the midframe. If the adhesive is too strong, reapply heat with the iOpener.
- Using the suction cup, apply pressure to the middle section of the panel while pulling up the lower edge by pivoting your wrist.

Step 9



- Once you've opened a large enough gap, insert an opening pick between the rear glass and the midframe.

Step 10



- Slide the opening pick around the bottom left corner of the rear glass panel.

Step 11



- Slide the pick along the power button side of the phone.

Step 12



- Slide the opening pick across the top of the phone.

Step 13



- Slide the opening pick down along the volume buttons side of the phone.

Step 14



- Pull up on the rear glass panel while holding down the midframe to separate the components.
- ❗ If you encounter too much resistance from the adhesive, slide the opening pick under the glass a few more times.

Step 15



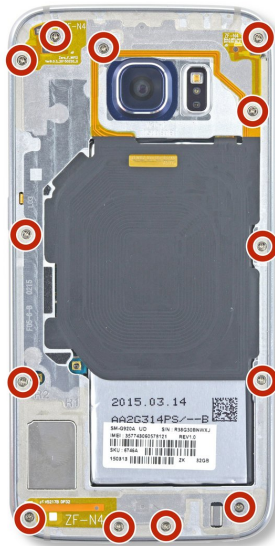
- Insert an opening pick between the rear panel and the midframe.
- Slide the pick along the top of the phone to loosen the remaining adhesive.
- Twist the pick to separate the two pieces.

Step 16



- ① At this point, the rear glass panel should be fully separated from the body of the phone, although the adhesive strip may be attached to both sides.
- Pull the rear panel up and away to completely separate it.
- ✎ Follow [this guide](#) to reinstall the rear glass.

Step 17



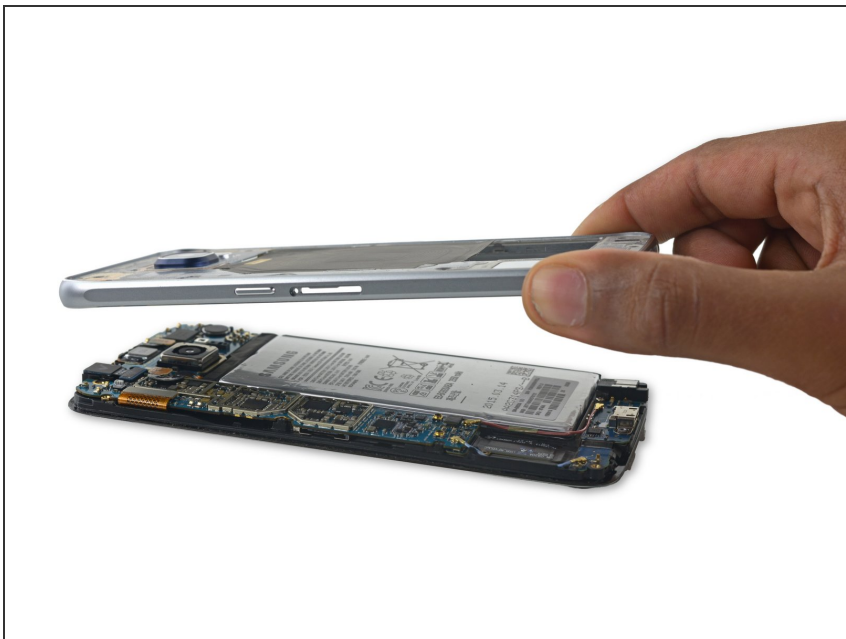
- Remove the thirteen 3.5mm Phillips #00 screws securing the midframe to the phone.

Step 18



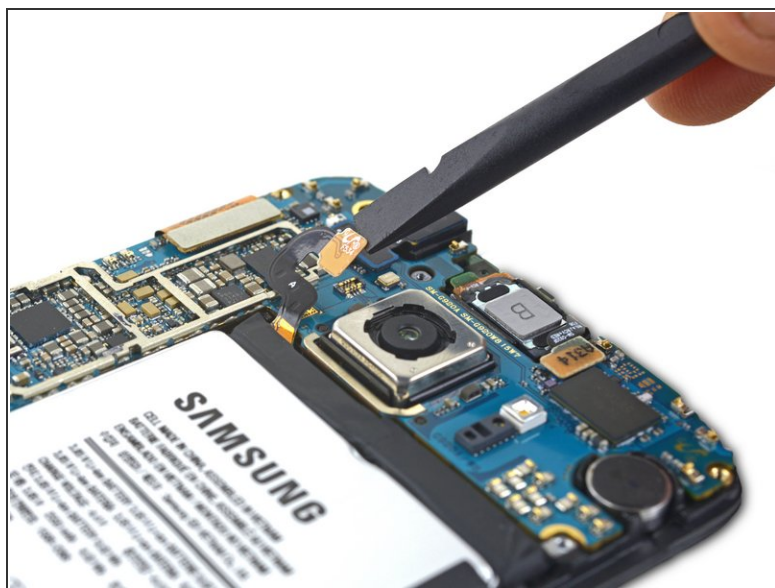
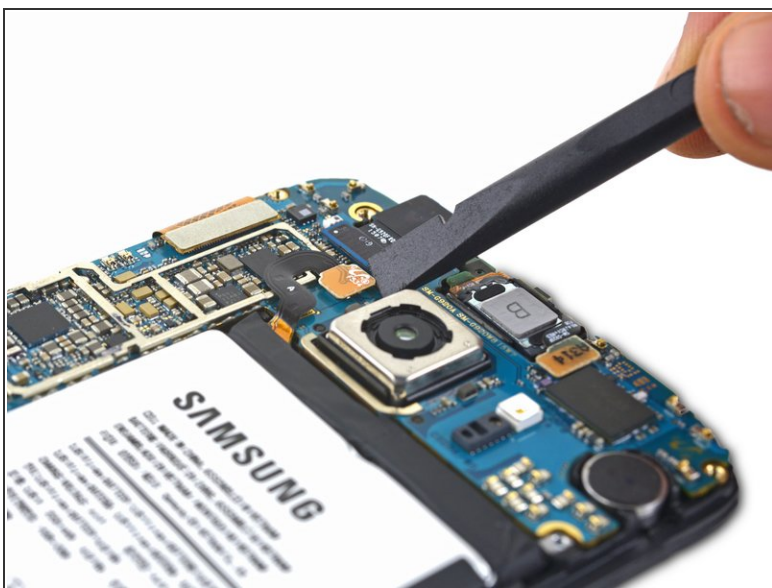
- Firmly grasp the edge of the midframe assembly.
- Lift up on the midframe assembly while pushing down on the battery to separate the midframe assembly from the rest of the phone.

Step 19



- Lift the midframe assembly up to separate it from the rest of the phone.

Step 20



- Use the flat end of the spudger to disconnect the battery connector from its socket on the motherboard.

Step 21



- Insert a plastic opening pick between the case and the battery.

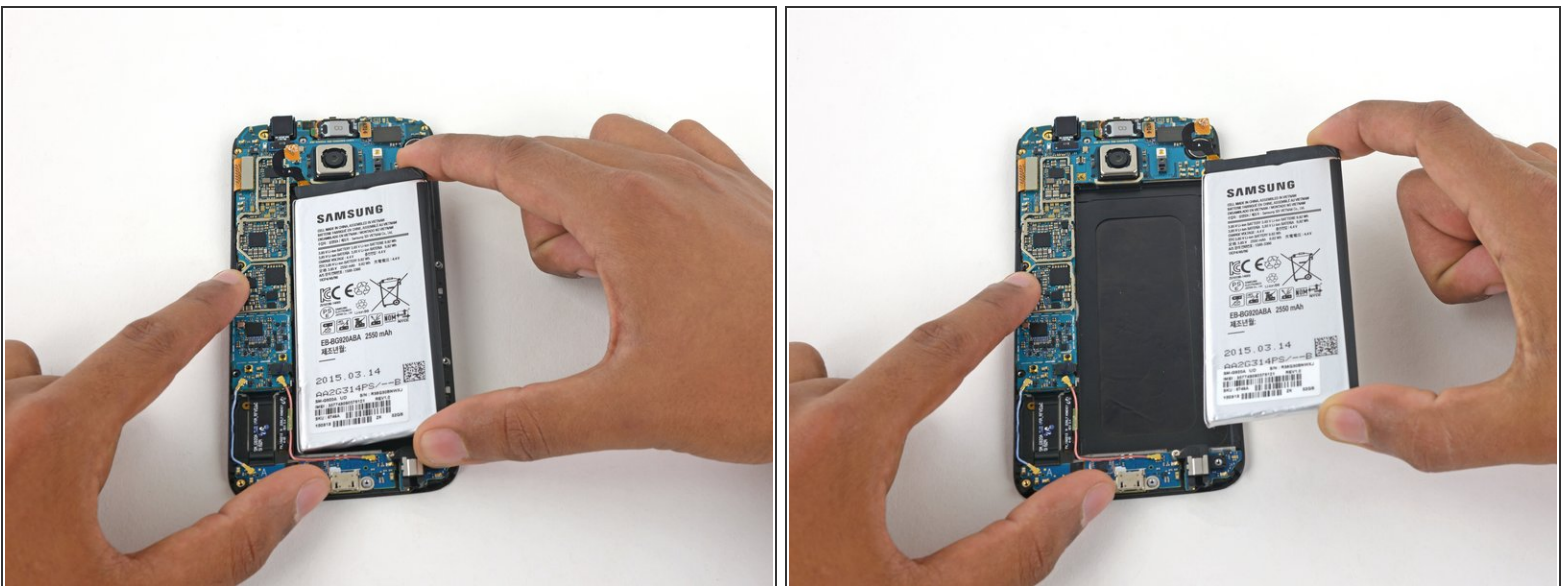
⚠ Be careful to keep the pick as flat as possible to avoid bending the battery, which may damage it and cause it to release dangerous chemicals.

- Push the pick further in to separate the battery from the phone.

ⓘ If the battery is too strongly adhered for the opening pick, place a warm iOpener over the battery to loosen the adhesive.

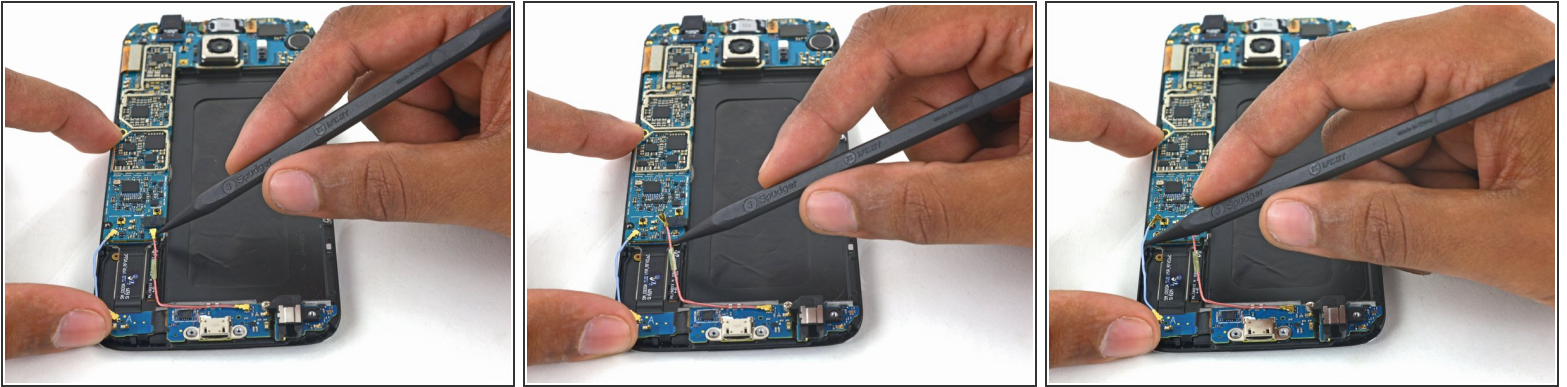
⚠ Do not pry against the motherboard or you may damage the phone.

Step 22



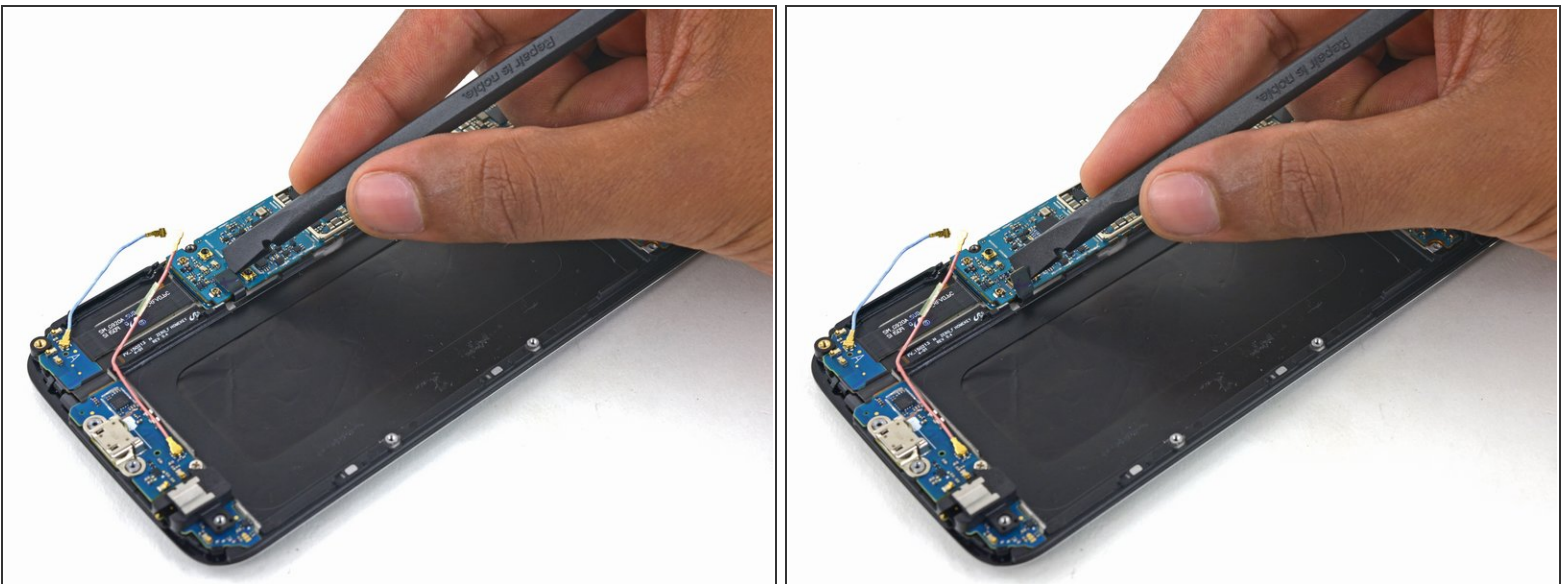
- Remove the battery from the phone.

Step 23



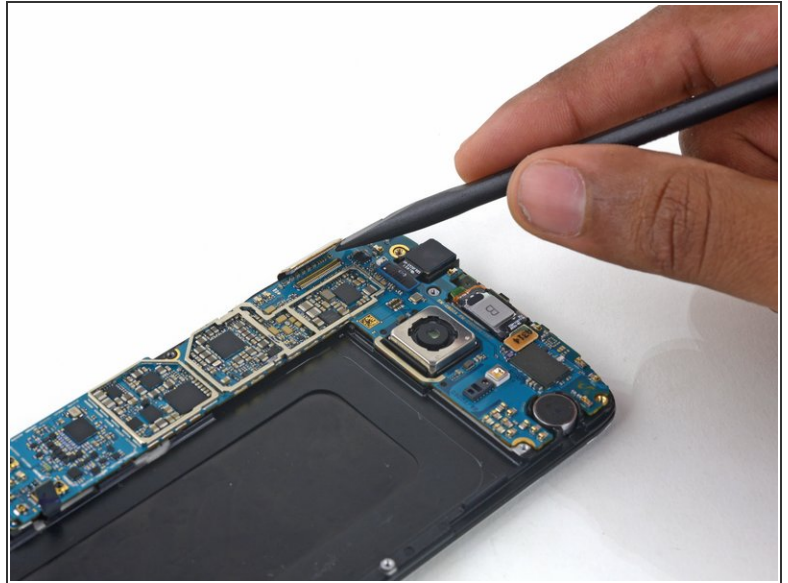
- Use the pointed edge of a spudger to disconnect the Bluetooth and Wi-Fi antenna cable connectors from their sockets on the motherboard.

Step 24



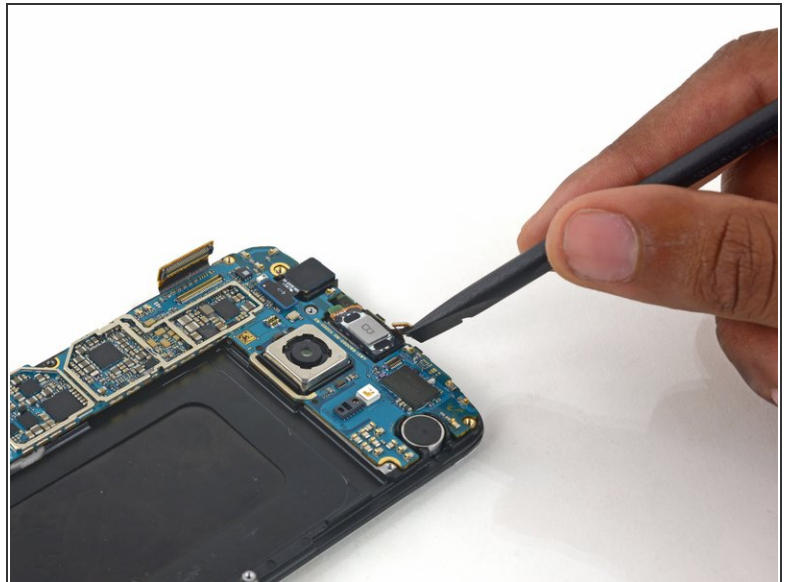
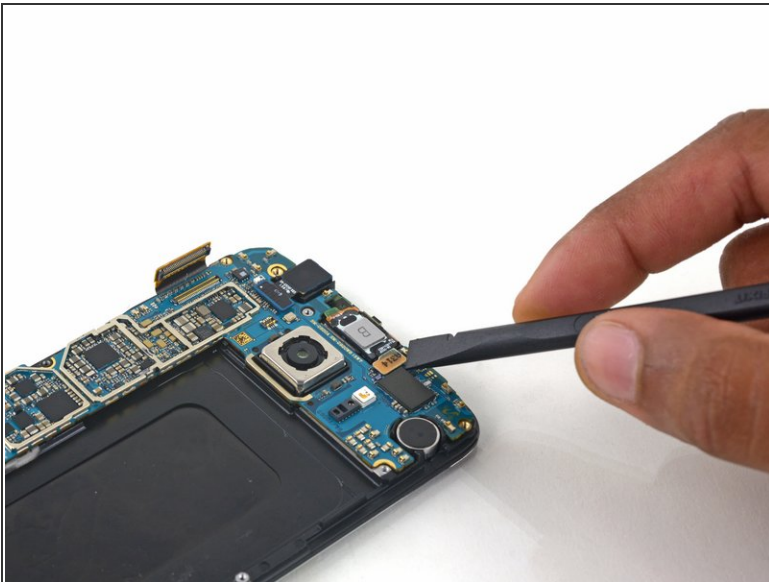
- Use the flat end of the spudger to disconnect the home button connector.

Step 25



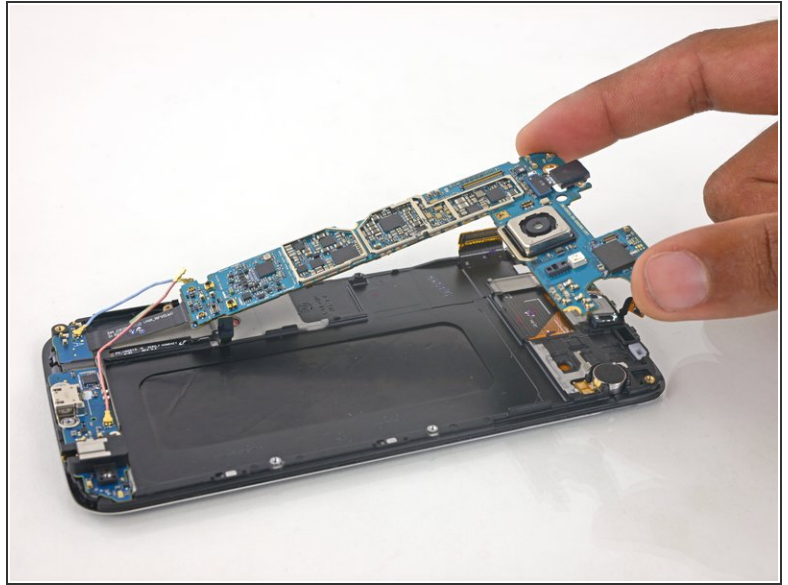
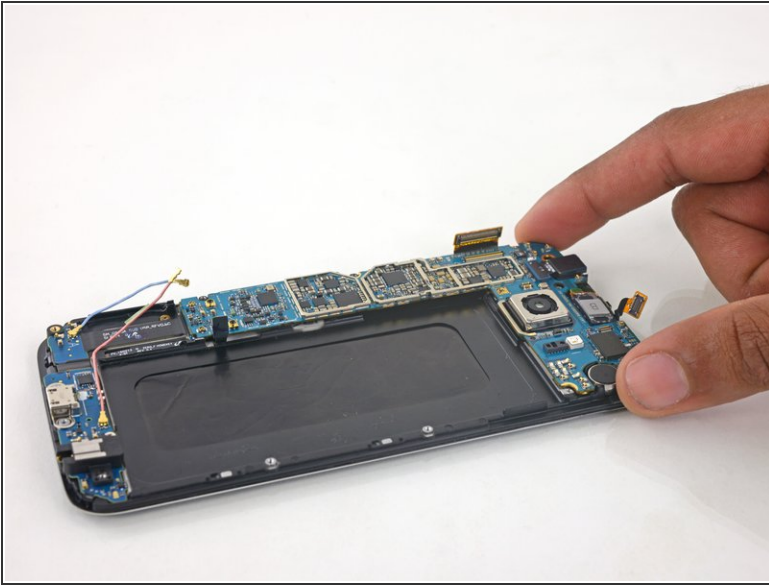
- Use the flat end of a spudger to disconnect the display assembly cable from the motherboard.

Step 26



- Disconnect the earpiece speaker assembly cable connector from the motherboard.

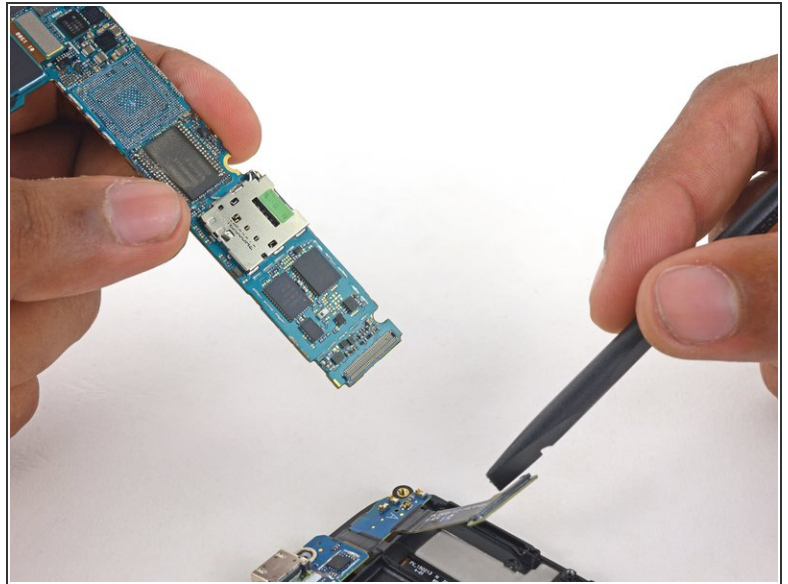
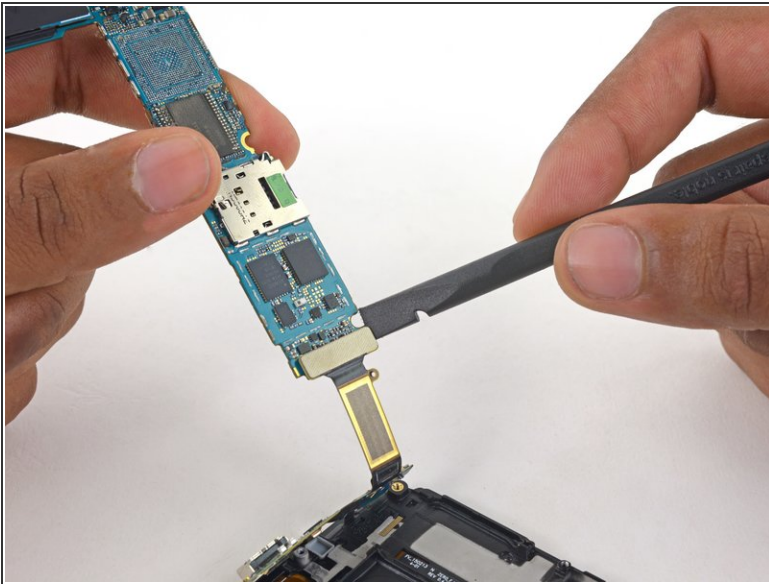
Step 27



- Lift the camera-side end of the motherboard to separate it from the display frame.

⚠ Do **not** fully remove the motherboard yet—it is still attached to the daughterboard via a ribbon cable on the underside of the motherboard.

Step 28



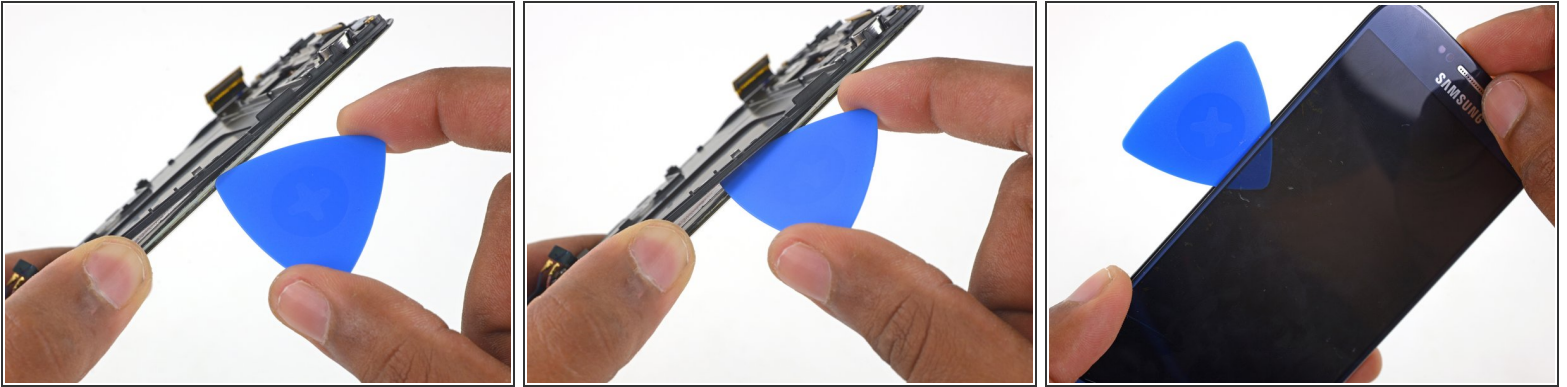
- Disconnect the daughterboard ribbon cable connector from its socket on the underside of the motherboard.

Step 29



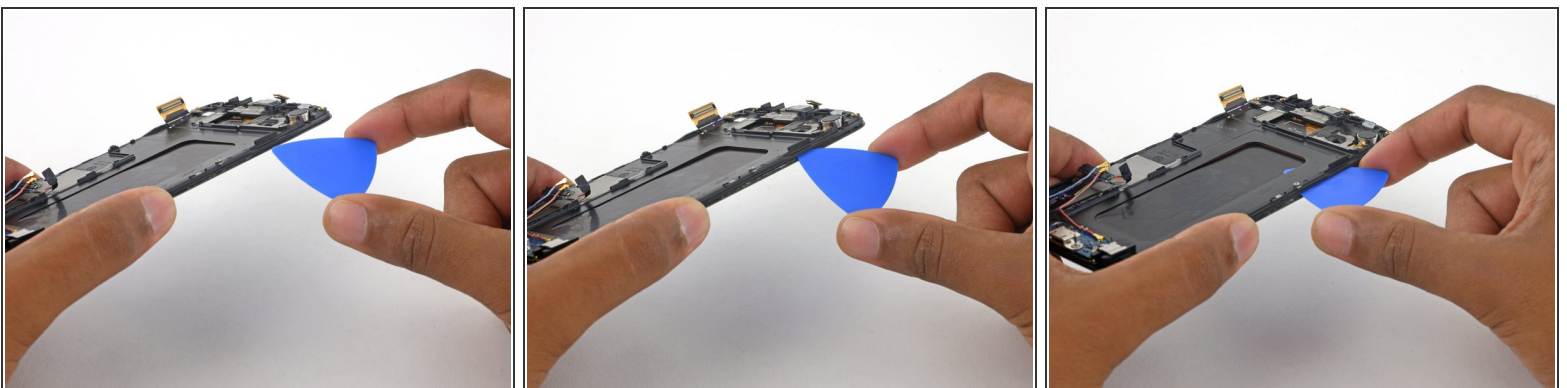
- Reheat the iOpener.
- Lay the iOpener across the S6 display. After 30 seconds, shift the iOpener to the other half of the screen.

Step 30



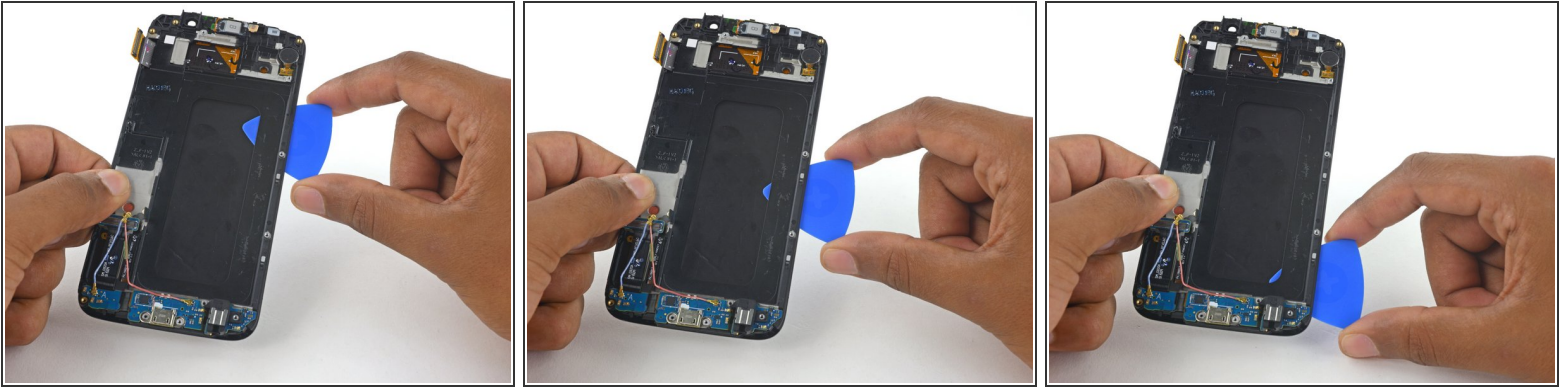
- Insert the opening pick at an upward angle.
- The plastic frame is glued to the display assembly. The following steps separate the plastic frame from the display assembly.
 - ⚠ It's very possible to accidentally destroy the LCD screen at this point. Be extremely careful separating these parts.
 - ⓘ When done correctly, you will see a gap between the display frame and the display assembly.
 - ⚠ When done incorrectly, the pick will be visible through the LCD. If this happens simply remove the pick and start again.

Step 31



- ⓘ Flip the phone over so it's facedown.
- Insert an opening pick on the right side of the phone between the display assembly and plastic display frame.

Step 32



- Slide the pick downwards to separate the display frame from the display assembly.

Step 33



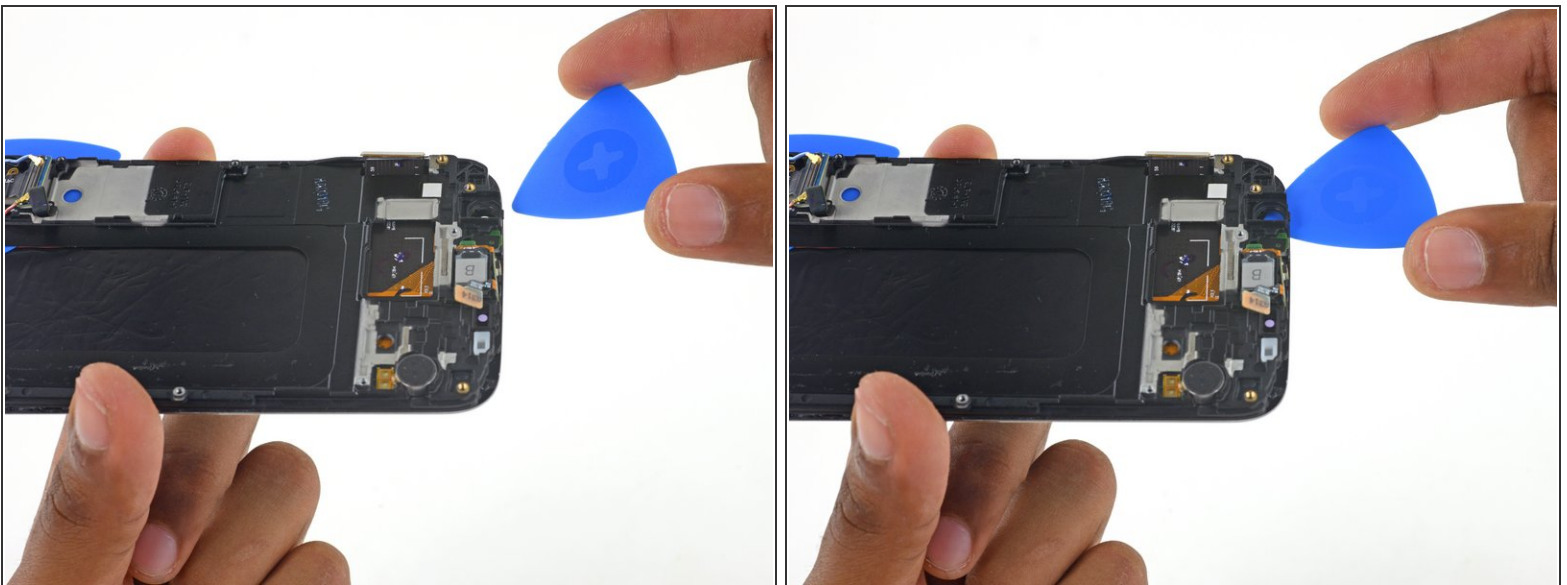
- Leave the first opening pick next to the headphone jack.
- Insert a second opening pick between the frame and display assembly on the display cable side of the phone.

Step 34



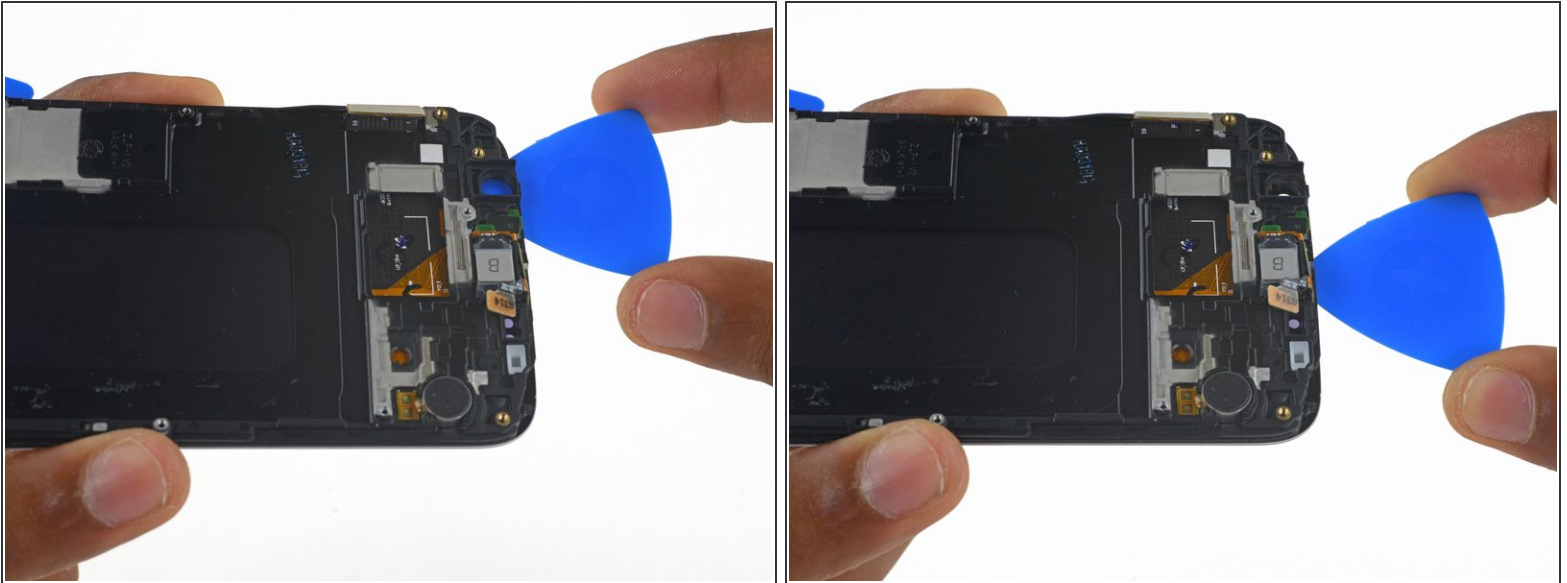
- Slide the second pick towards the daughterboard.

Step 35



- Insert another pick between the display frame and digitizer from the top side of the phone.

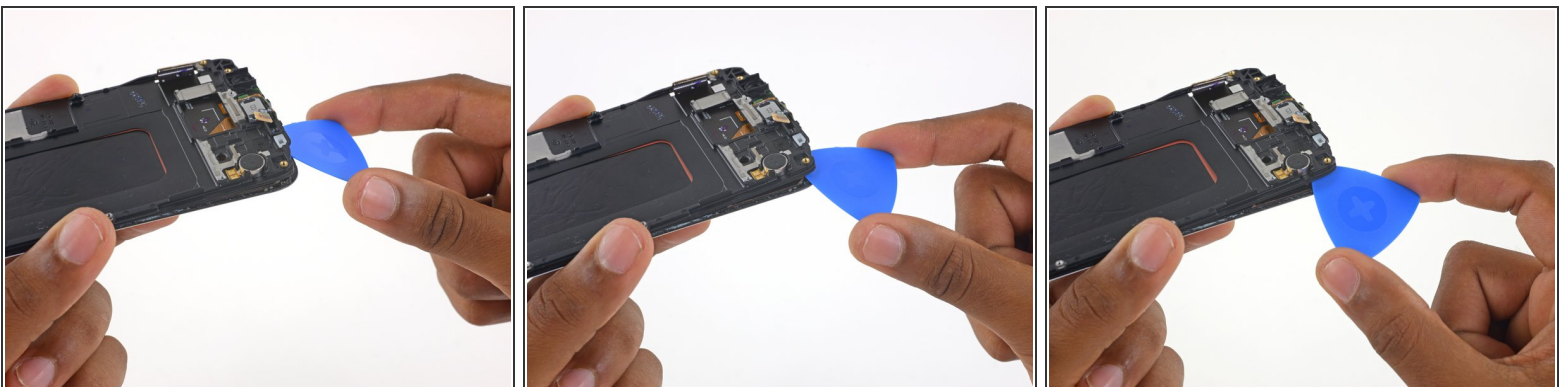
Step 36



- Slide the pick along the top of the phone towards the vibrator.

⚠ Pull the pick out slightly to avoid the earpiece speaker grille.

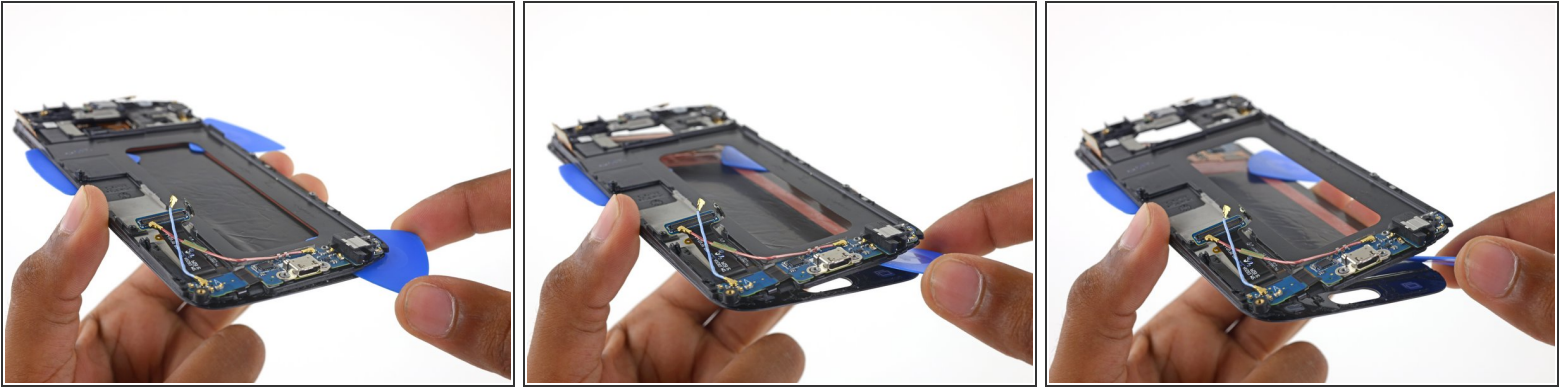
Step 37



- Slide the opening pick around the top right corner of the phone.

⚠ Use just the tip of the pick for this step, as the touchscreen controller IC is below the display frame in the top right corner.

Step 38



- Grasp the opening pick next to the headphone jack and slide it to the bottom right corner of the display frame.
- Twist the opening pick to separate the plastic frame from the display assembly.

Step 39



- Continue to lift the plastic frame from the right side, using the display connector as a hinge.
- Once you've lifted the frame past 90 degrees, thread the digitizer cable through its hole in the display frame and separate the frame from the display assembly.

Step 40



- Remove the single 3.0mm Phillips #00 screw securing the daughterboard to the display frame.

Step 41

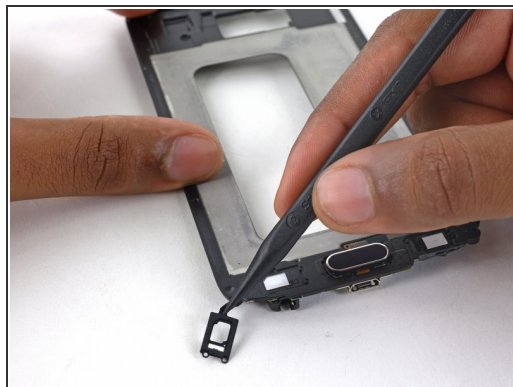
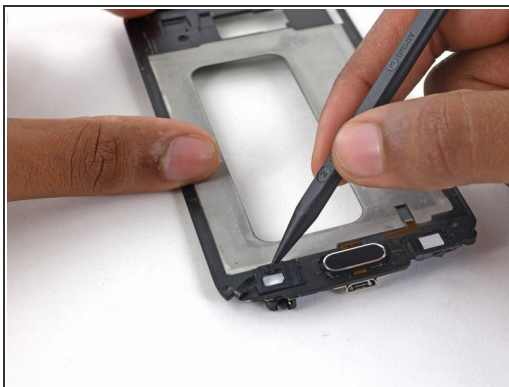


i Flip the display frame over so the home button is facing you.

- Insert the pointed edge of the spudger into the groove next to the right soft button LED cable.
- Gently lift the LED cable off the display frame.

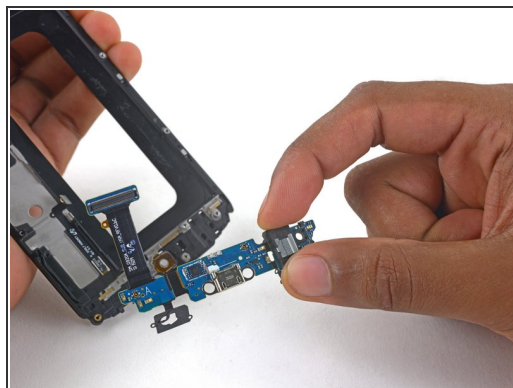
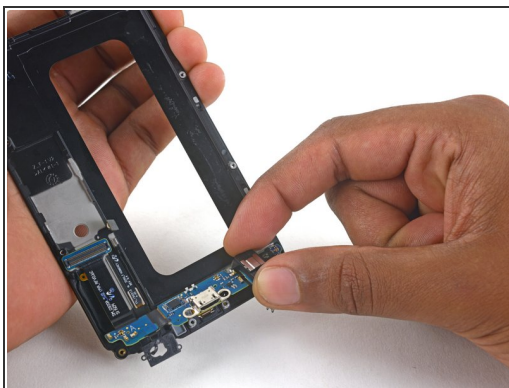
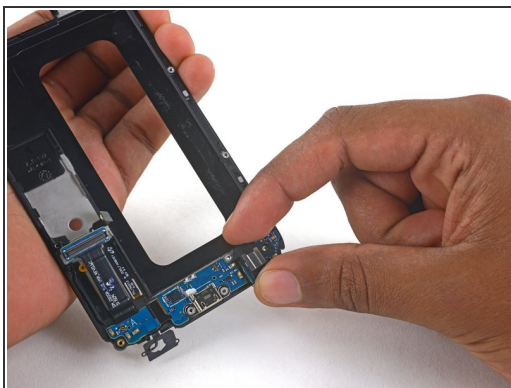
⚠ Be careful to not rip these delicate cables when peeling them off the plastic frame.

Step 42



- Insert the pointed edge of the spudger into the groove above the left soft button LED cable.
- Lift the left soft button LED cable off the plastic frame.

Step 43



- ❗ Flip the frame over again and lift up the daughterboard to peel it off the display frame.

To reassemble your device, follow these instructions in reverse order. When reinstalling the rear glass, refer to the [rear glass adhesive replacement guide](#).