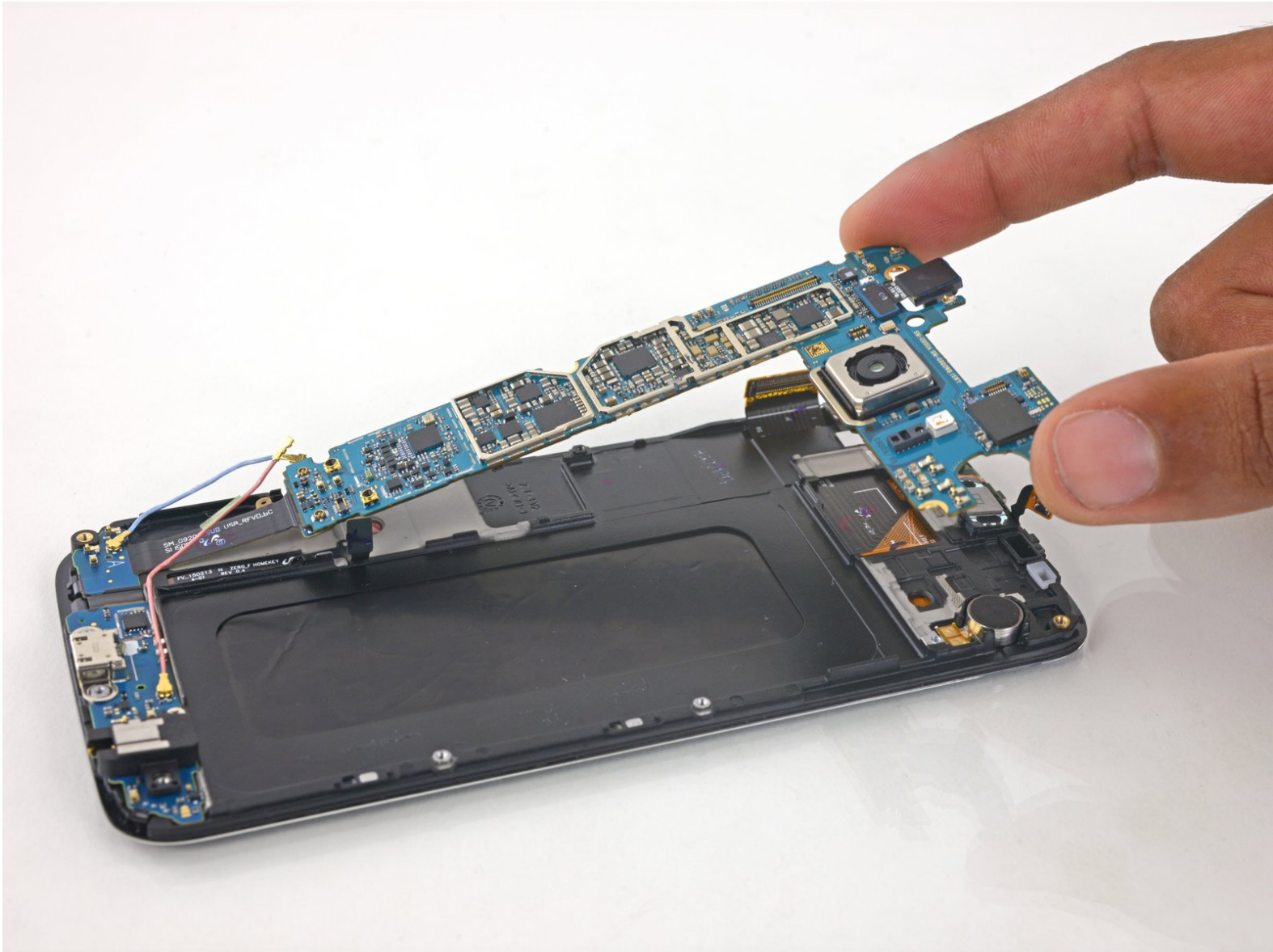




# Samsung Galaxy S6 Motherboard Replacement

Written By: Dozuki System



# INTRODUCTION

Follow this guide to replace the motherboard on your Samsung Galaxy S6.

This guide involves removing the rear glass. Removing the rear glass destroys the adhesive holding it in place. Follow [this guide](#) to reinstall the rear glass.



## TOOLS:

- [Heavy-Duty Suction Cups \(Pair\)](#) (1)
- [iOpener](#) (1)
- [Phillips #00 Screwdriver](#) (1)
- [Spudger](#) (1)
- [Tweezers](#) (1)
- [iFixit Opening Picks set of 6](#) (1)
- [SIM Card Eject Tool](#) (1)




## PARTS:

- [Galaxy S6 Motherboard \(Verizon\)](#) (1)
- [Galaxy S6 Antenna Cables](#) (1)

## Step 1 — Motherboard



- Insert a paper clip or SIM eject tool into the hole in the SIM card slot on the power button side of the phone.
- Press to eject the SIM card tray.

 Don't press too hard or you may damage the SIM card tray.



## Step 2



- Remove the SIM card tray from the phone.

## Step 3



-  We recommend that you clean your microwave before proceeding, as any nasty gunk on the bottom may end up stuck to the iOpener.
- Place the iOpener in the center of the microwave.
-  For carousel microwaves: Make sure the plate spins freely. If your iOpener gets stuck, it may overheat and burn.

## Step 4



- Heat the iOpener for **thirty seconds**.
- Throughout the repair procedure, as the iOpener cools, reheat it in the microwave for an additional thirty seconds at a time.

- ⚠ Be careful not to overheat the iOpener during the repair. Overheating may cause the iOpener to burst.
- ⚠ Never touch the iOpener if it appears swollen.
- ⚠ If the iOpener is still too hot in the middle to touch, continue using it while waiting for it to cool down some more before reheating. A properly heated iOpener should stay warm for up to 10 minutes.



## Step 5



- Remove the iOpener from the microwave, holding it by one of the two flat ends to avoid the hot center.

**⚠ The iOpener will be very hot, so be careful when handling it. Use an oven mitt if necessary.**

## Step 6



- ⓘ Place the phone facedown.
- ⓘ If your glass is shattered, put packing tape over the entire panel to hold it together during the removal process.
- Lay the iOpener over the panel for about 60 seconds to loosen the adhesive around the edge of the glass.
- Shift the iOpener to heat the remaining section of the panel for another 60 seconds.

## Step 7



- Attach a heavy-duty suction cup to the lower half of the rear glass panel.
- Secure the suction cup by raising the hinged handle and flipping the latch to clamp both handles in place.

## Step 8



- ① The following steps involve using an opening pick to separate the rear panel from the midframe. If the adhesive is too strong, reapply heat with the iOpener.
- Using the suction cup, apply pressure to the middle section of the panel while pulling up the lower edge by pivoting your wrist.



## Step 9



- Once you've opened a large enough gap, insert an opening pick between the rear glass and the midframe.

## Step 10



- Slide the opening pick around the bottom left corner of the rear glass panel.

## Step 11



- Slide the pick along the power button side of the phone.

## Step 12



- Slide the opening pick across the top of the phone.

## Step 13



- Slide the opening pick down along the volume buttons side of the phone.

## Step 14



- Pull up on the rear glass panel while holding down the midframe to separate the components.
- ❗ If you encounter too much resistance from the adhesive, slide the opening pick under the glass a few more times.



## Step 15



- Insert an opening pick between the rear panel and the midframe.
- Slide the pick along the top of the phone to loosen the remaining adhesive.
- Twist the pick to separate the two pieces.

## Step 16



- ① At this point, the rear glass panel should be fully separated from the body of the phone, although the adhesive strip may be attached to both sides.
- Pull the rear panel up and away to completely separate it.
- ☞ Follow [this guide](#) to reinstall the rear glass.

## Step 17



- Remove the thirteen 3.5mm Phillips #00 screws securing the midframe to the phone.

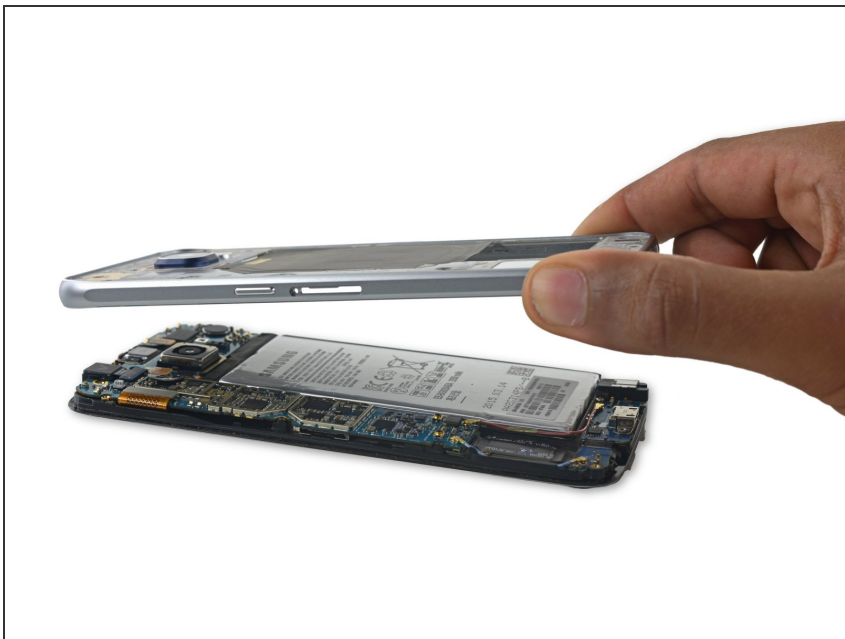
## Step 18



- Firmly grasp the edge of the midframe assembly.
- Lift up on the midframe assembly while pushing down on the battery to separate the midframe assembly from the rest of the phone.

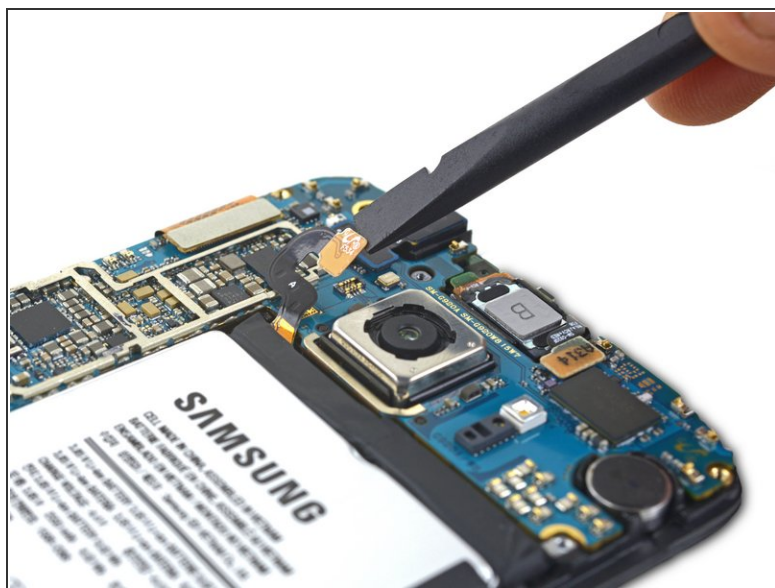
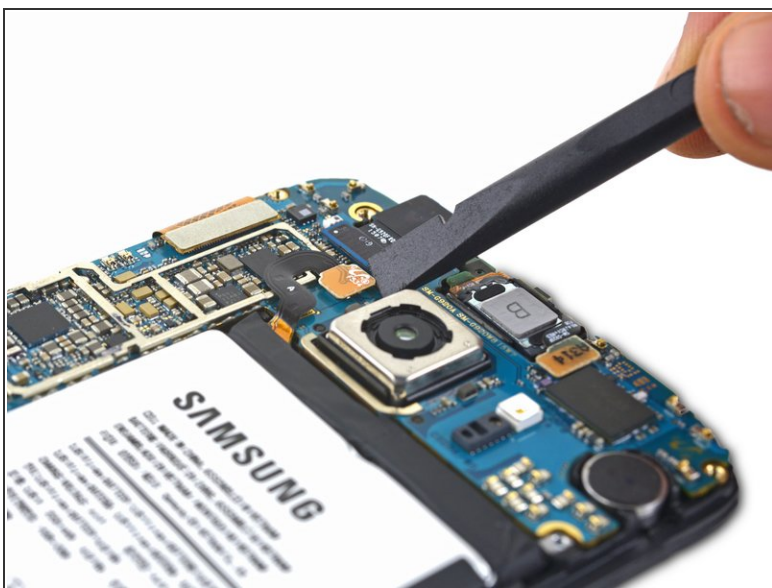


## Step 19



- Lift the midframe assembly up to separate it from the rest of the phone.

## Step 20



- Use the flat end of the spudger to disconnect the battery connector from its socket on the motherboard.

## Step 21



- Insert a plastic opening pick between the case and the battery.

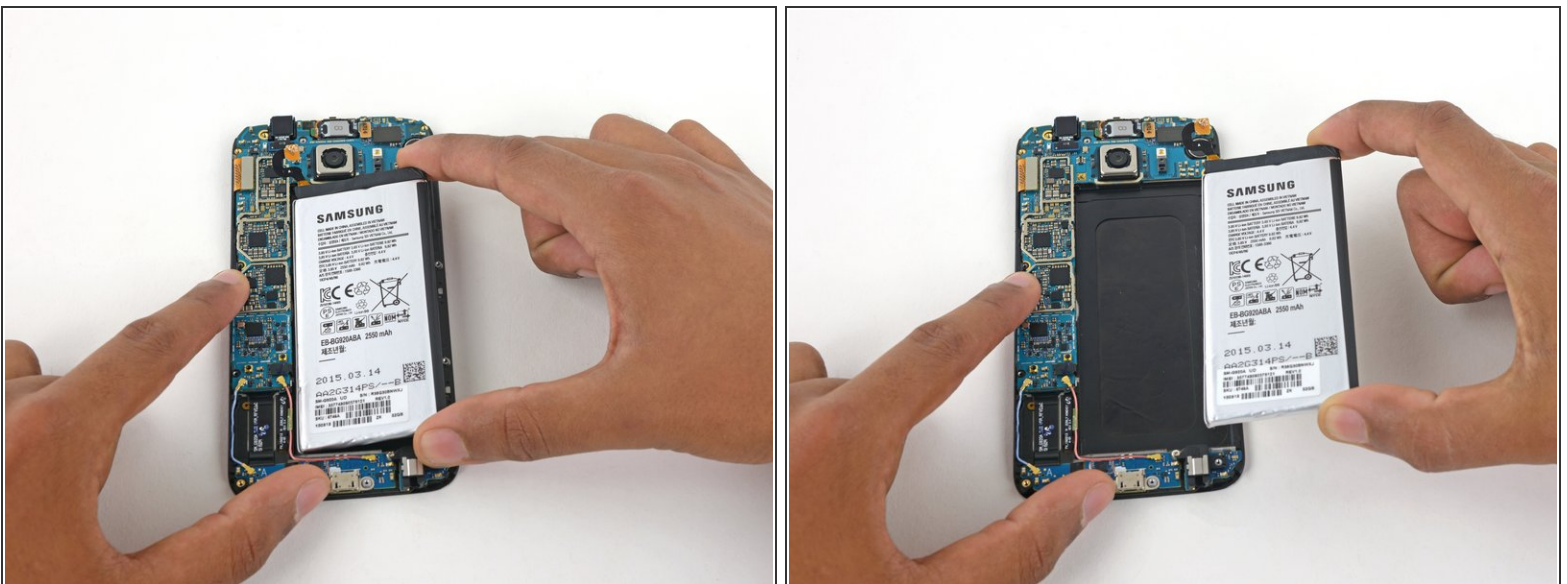
**⚠ Be careful to keep the pick as flat as possible to avoid bending the battery, which may damage it and cause it to release dangerous chemicals.**

- Push the pick further in to separate the battery from the phone.

**ⓘ If the battery is too strongly adhered for the opening pick, place a warm iOpener over the battery to loosen the adhesive.**

**⚠ Do not pry against the motherboard or you may damage the phone.**

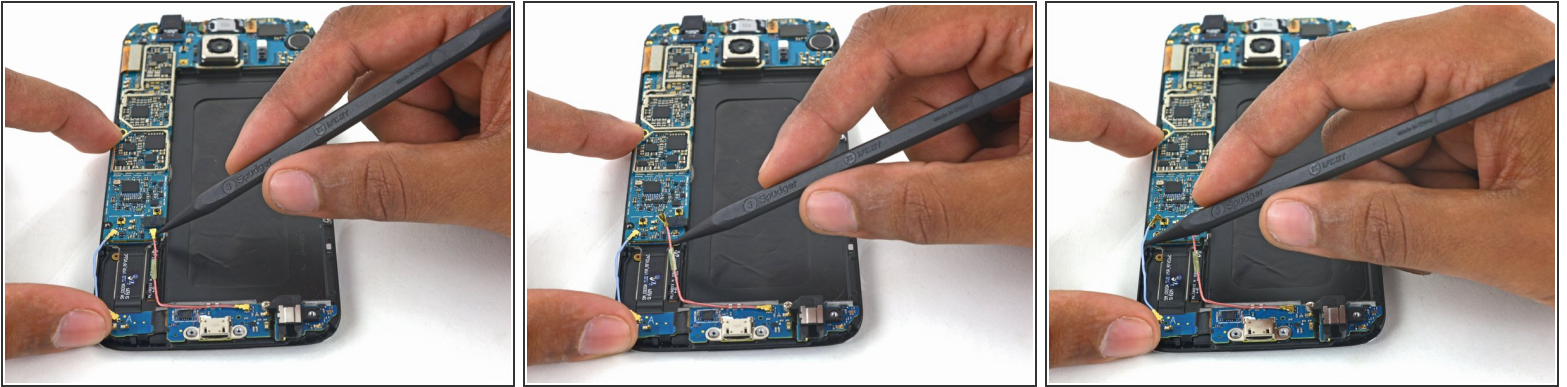
## Step 22



- Remove the battery from the phone.

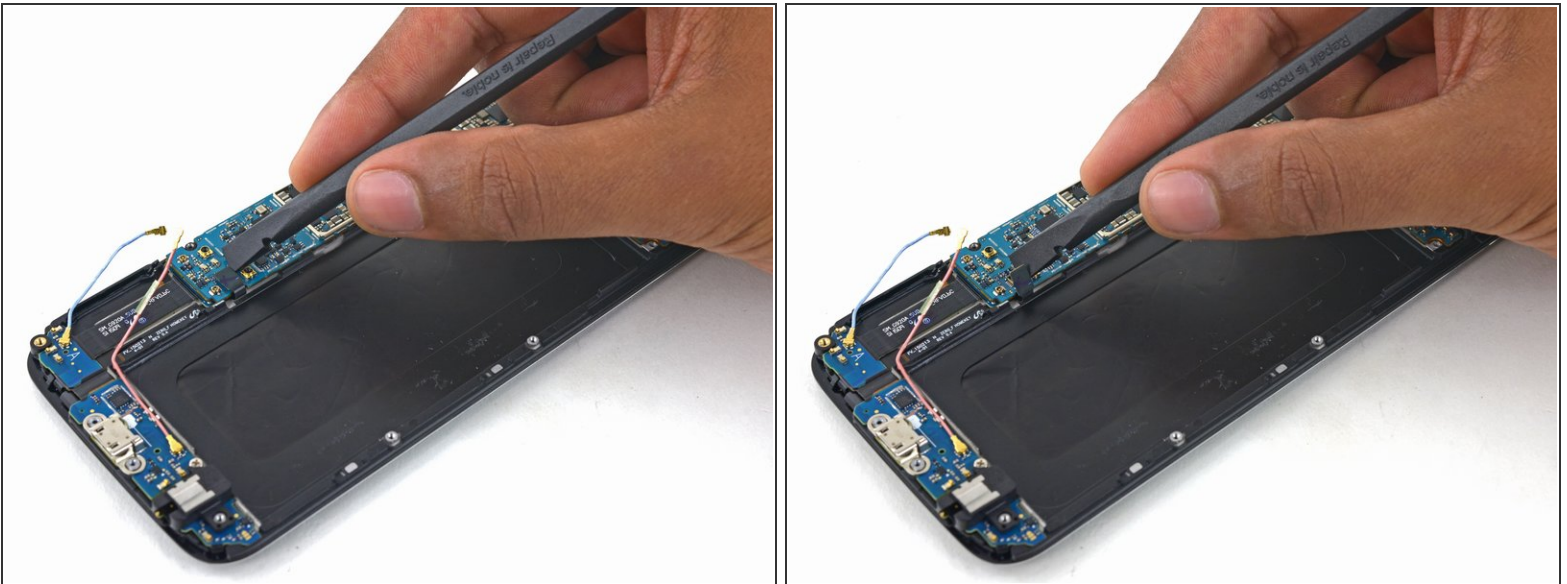


## Step 23



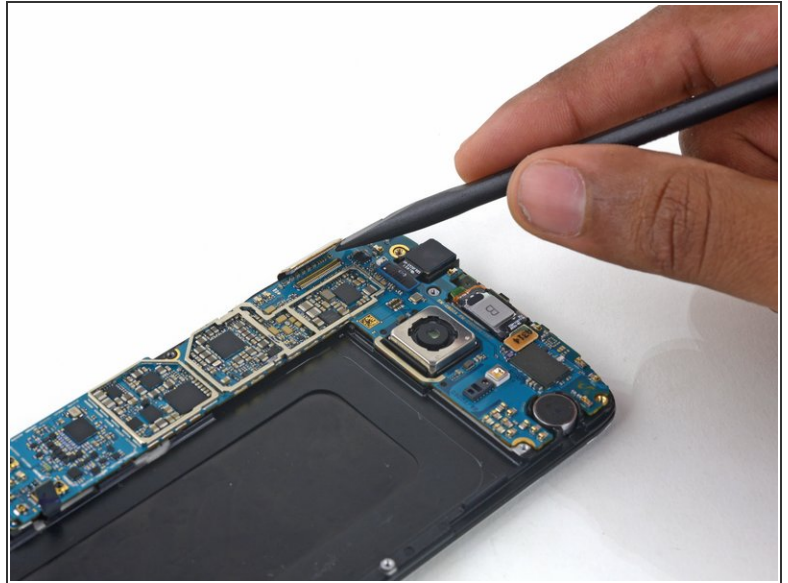
- Use the pointed edge of a spudger to disconnect the Bluetooth and Wi-Fi antenna cable connectors from their sockets on the motherboard.

## Step 24



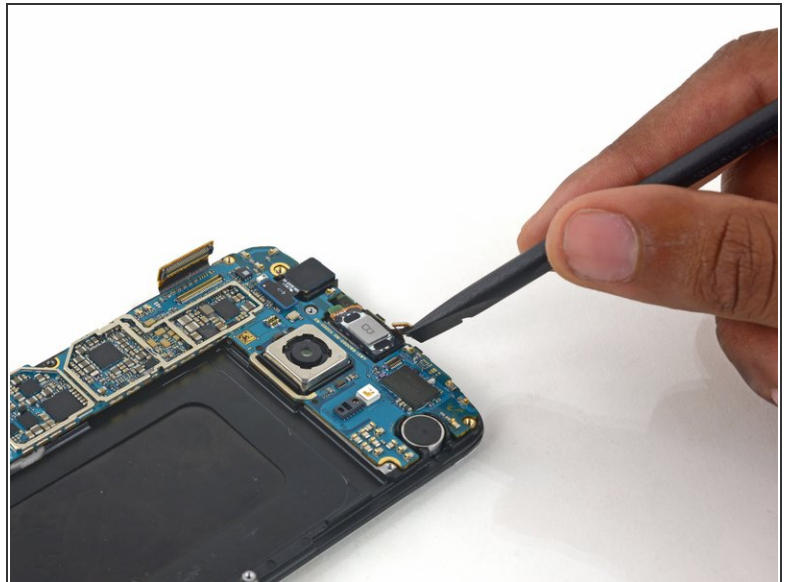
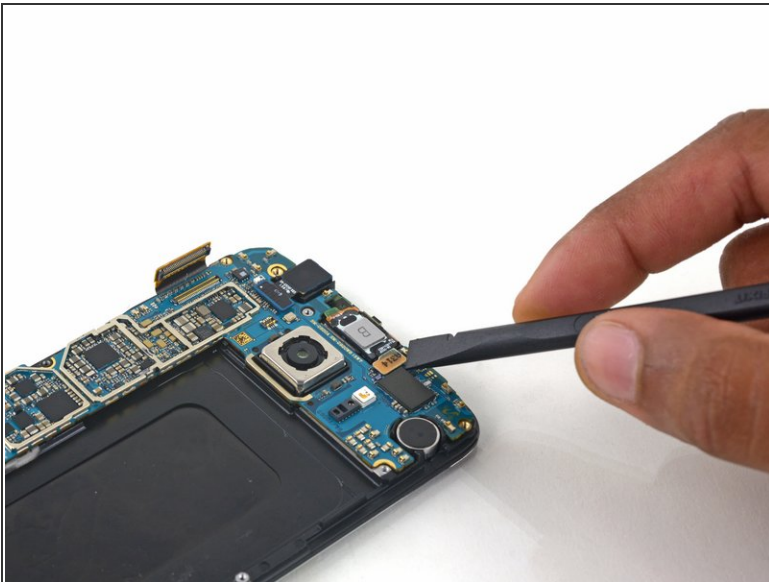
- Use the flat end of the spudger to disconnect the home button connector.

## Step 25



- Use the flat end of a spudger to disconnect the display assembly cable from the motherboard.

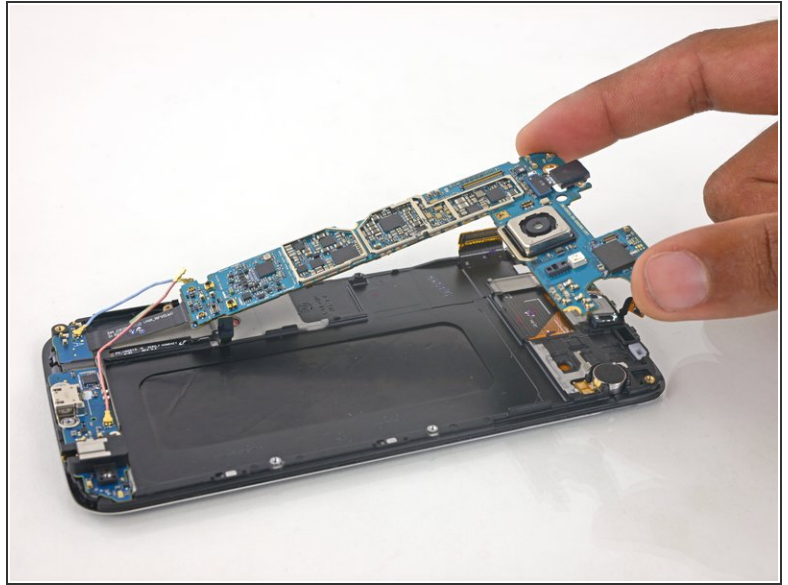
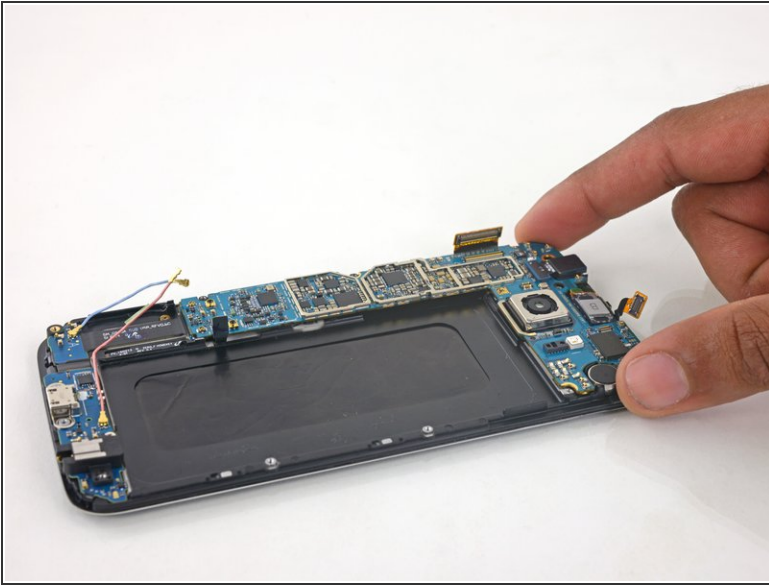
## Step 26



- Disconnect the earpiece speaker assembly cable connector from the motherboard.



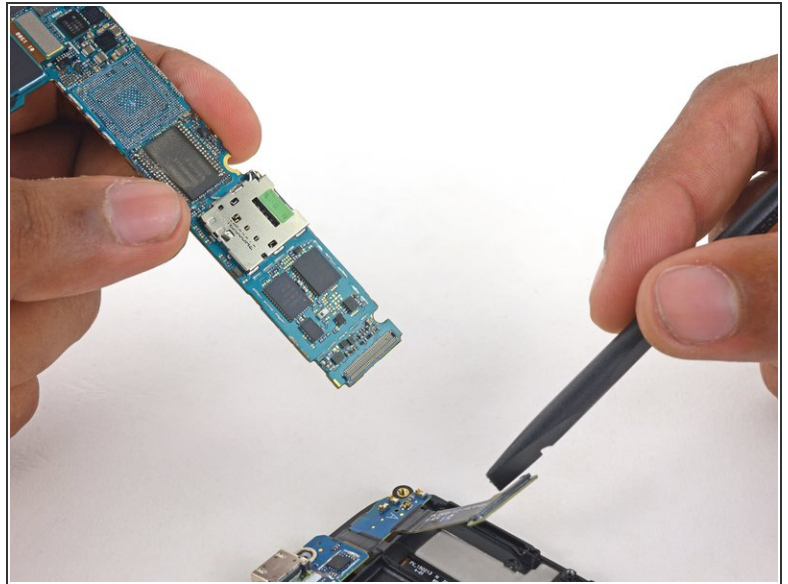
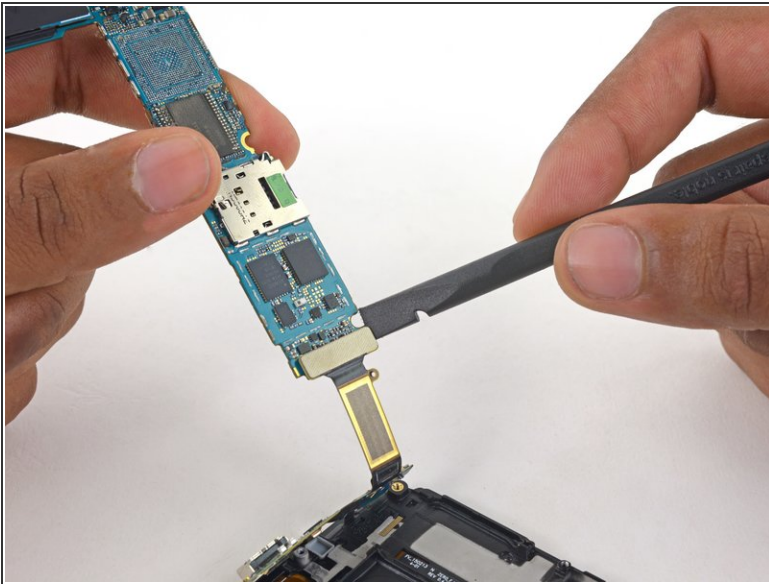
## Step 27



- Lift the camera-side end of the motherboard to separate it from the display frame.

⚠ Do **not** fully remove the motherboard yet—it is still attached to the daughterboard via a ribbon cable on the underside of the motherboard.

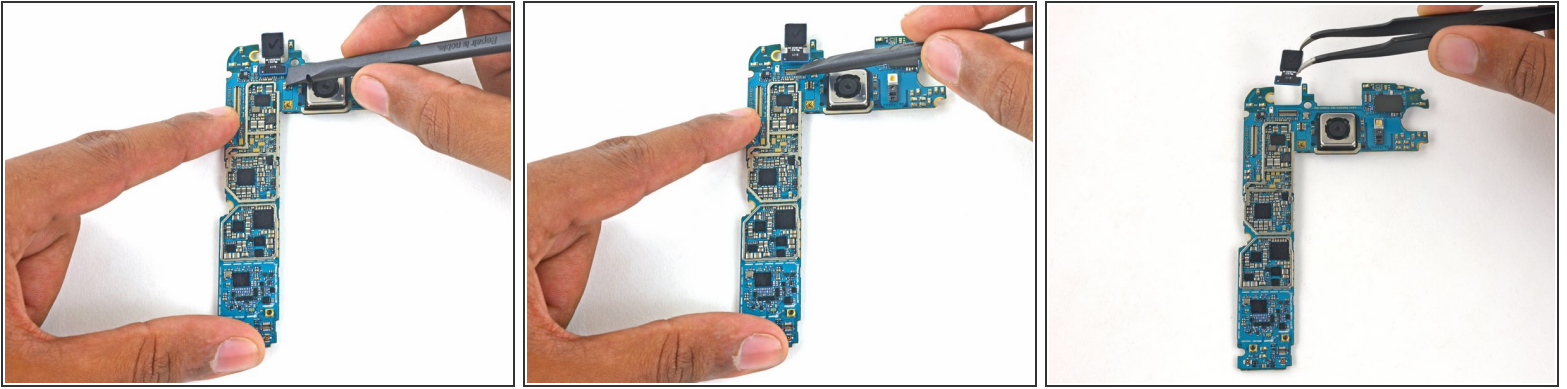
## Step 28



- Disconnect the daughterboard ribbon cable connector from its socket on the underside of the motherboard.

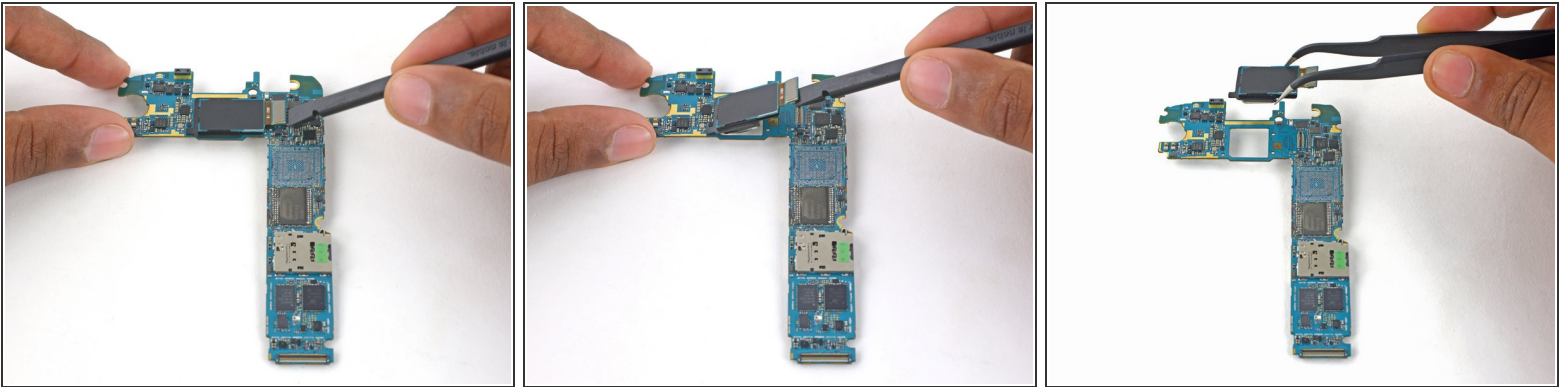


## Step 29



- Use the flat end of a spudger to disconnect the front-facing camera from its connector on the motherboard.
- Remove the camera.

## Step 30



- Use the flat end of the spudger to disconnect the rear-facing camera from its socket on the motherboard.
- Remove the camera.

To reassemble your device, follow these instructions in reverse order. When reinstalling the rear glass, refer to the [rear glass adhesive replacement guide](#).