



Samsung Galaxy S6 Power Button Replacement

Written By: Dozuki System



INTRODUCTION

Use this guide to replace the power button on your Samsung Galaxy S6.

This guide involves removing the rear glass. Removing the rear glass destroys the adhesive holding it in place. Follow [this guide](#) to reinstall the rear glass.



TOOLS:

- [SIM Card Eject Tool](#) (1)
- [iFixit Opening Tools](#) (1)
- [iFixit Opening Picks set of 6](#) (1)
- [Heavy-Duty Suction Cups \(Pair\)](#) (1)
- [iOpener](#) (1)
- [Phillips #00 Screwdriver](#) (1)
- [Tweezers](#) (1)



PARTS:

- [Galaxy S6 Power Button Cable](#) (1)
- [Galaxy S6 Power and Volume Buttons](#) (1)

Step 1 — Power Button



- Insert a paper clip or SIM eject tool into the hole in the SIM card slot on the power button side of the phone.
- Press to eject the SIM card tray.

⚠ Don't press too hard or you may damage the SIM card tray.



Step 2



- Remove the SIM card tray from the phone.

Step 3



-  We recommend that you clean your microwave before proceeding, as any nasty gunk on the bottom may end up stuck to the iOpener.
- Place the iOpener in the center of the microwave.
-  For carousel microwaves: Make sure the plate spins freely. If your iOpener gets stuck, it may overheat and burn.

Step 4



- Heat the iOpener for **thirty seconds**.
- Throughout the repair procedure, as the iOpener cools, reheat it in the microwave for an additional thirty seconds at a time.

- ⚠ Be careful not to overheat the iOpener during the repair. Overheating may cause the iOpener to burst.
- ⚠ Never touch the iOpener if it appears swollen.
- ⚠ If the iOpener is still too hot in the middle to touch, continue using it while waiting for it to cool down some more before reheating. A properly heated iOpener should stay warm for up to 10 minutes.

Step 5



- Remove the iOpener from the microwave, holding it by one of the two flat ends to avoid the hot center.

⚠ The iOpener will be very hot, so be careful when handling it. Use an oven mitt if necessary.

Step 6



- ⓘ Place the phone facedown.
- ⓘ If your glass is shattered, put packing tape over the entire panel to hold it together during the removal process.
- Lay the iOpener over the panel for about 60 seconds to loosen the adhesive around the edge of the glass.
- Shift the iOpener to heat the remaining section of the panel for another 60 seconds.

Step 7



- Attach a heavy-duty suction cup to the lower half of the rear glass panel.
- Secure the suction cup by raising the hinged handle and flipping the latch to clamp both handles in place.

Step 8



- ① The following steps involve using an opening pick to separate the rear panel from the midframe. If the adhesive is too strong, reapply heat with the iOpener.
- Using the suction cup, apply pressure to the middle section of the panel while pulling up the lower edge by pivoting your wrist.

Step 9



- Once you've opened a large enough gap, insert an opening pick between the rear glass and the midframe.

Step 10



- Slide the opening pick around the bottom left corner of the rear glass panel.

Step 11



- Slide the pick along the power button side of the phone.

Step 12



- Slide the opening pick across the top of the phone.

Step 13



- Slide the opening pick down along the volume buttons side of the phone.

Step 14



- Pull up on the rear glass panel while holding down the midframe to separate the components.
 - ❗ If you encounter too much resistance from the adhesive, slide the opening pick under the glass a few more times.

Step 15



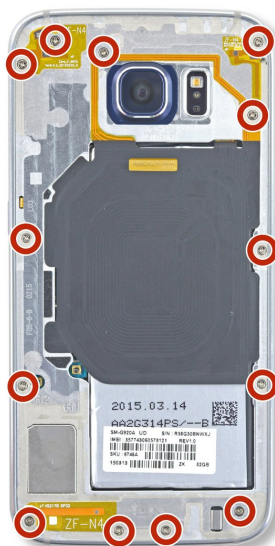
- Insert an opening pick between the rear panel and the midframe.
- Slide the pick along the top of the phone to loosen the remaining adhesive.
- Twist the pick to separate the two pieces.

Step 16



- ① At this point, the rear glass panel should be fully separated from the body of the phone, although the adhesive strip may be attached to both sides.
- Pull the rear panel up and away to completely separate it.
- ✦ Follow [this guide](#) to reinstall the rear glass.

Step 17



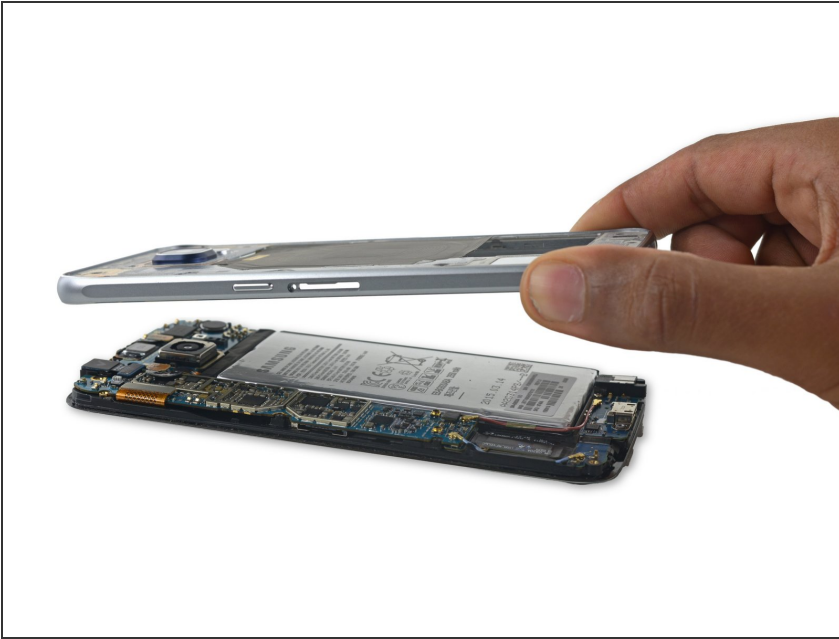
- Remove the thirteen 3.5mm Phillips #00 screws securing the midframe to the phone.

Step 18



- Firmly grasp the edge of the midframe assembly.
- Lift up on the midframe assembly while pushing down on the battery to separate the midframe assembly from the rest of the phone.

Step 19



- Lift the midframe assembly up to separate it from the rest of the phone.

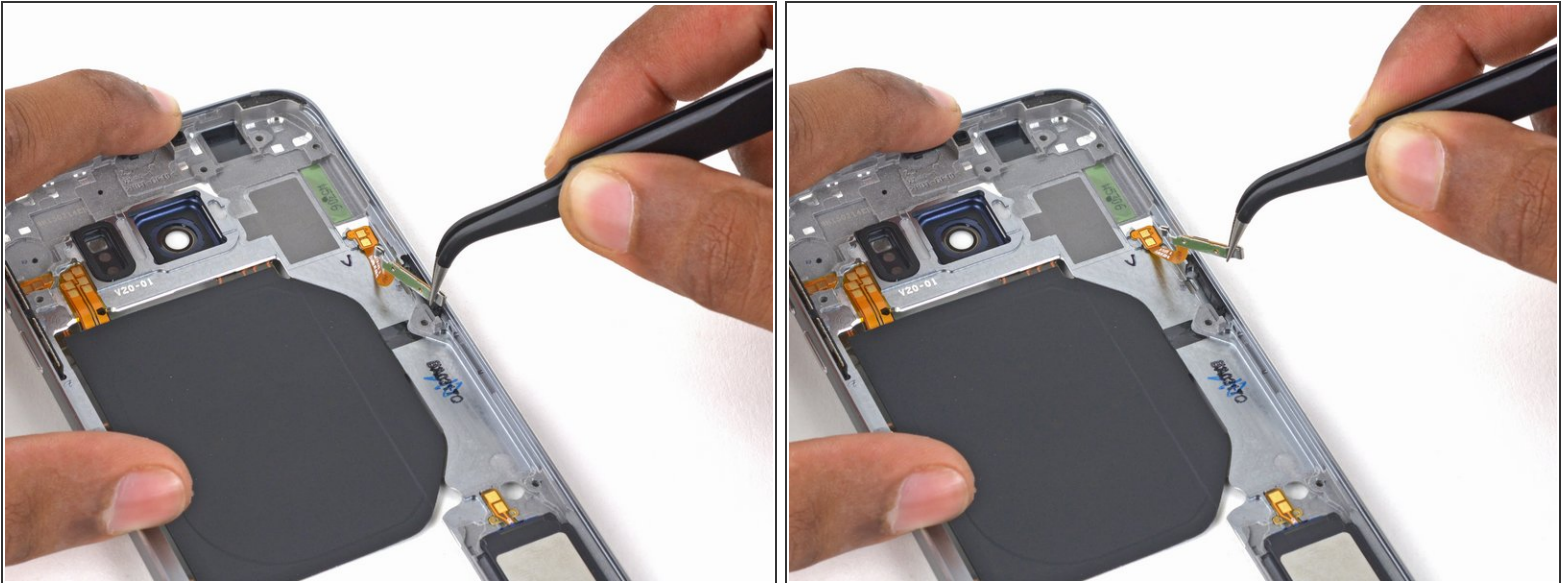
Step 20



- Using the angled tweezers, grip the power button bracket and pull it out of its socket.

⚠ Only remove the power button bracket from the socket. The ribbon cable is still attached to the midframe and will rip if you pull too hard.

Step 21



- Pull up lightly on the power button ribbon cable until only the the spring contacts are still adhered to the midframe.

⚠ Do **not attempt to pull the entire assembly up from the power button bracket. The adhesive on the spring contacts is stronger than the cable's.**

Step 22



- Insert the pointed edge of the spudger under the power button contact points.
- Press to pry up the connector.

Step 23



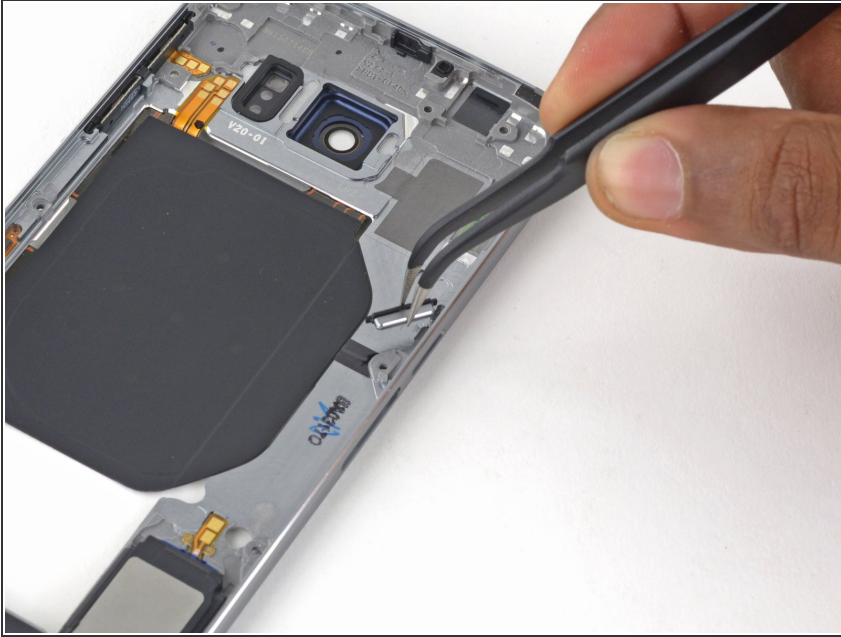
- Remove the power button bracket assembly.

Step 24



- Use the pointed end of the spudger to push the power button out of the midframe.

Step 25



- Use tweezers to remove the power button.

To reassemble your device, follow these instructions in reverse order. When reinstalling the rear glass, refer to the [rear glass adhesive replacement guide](#).