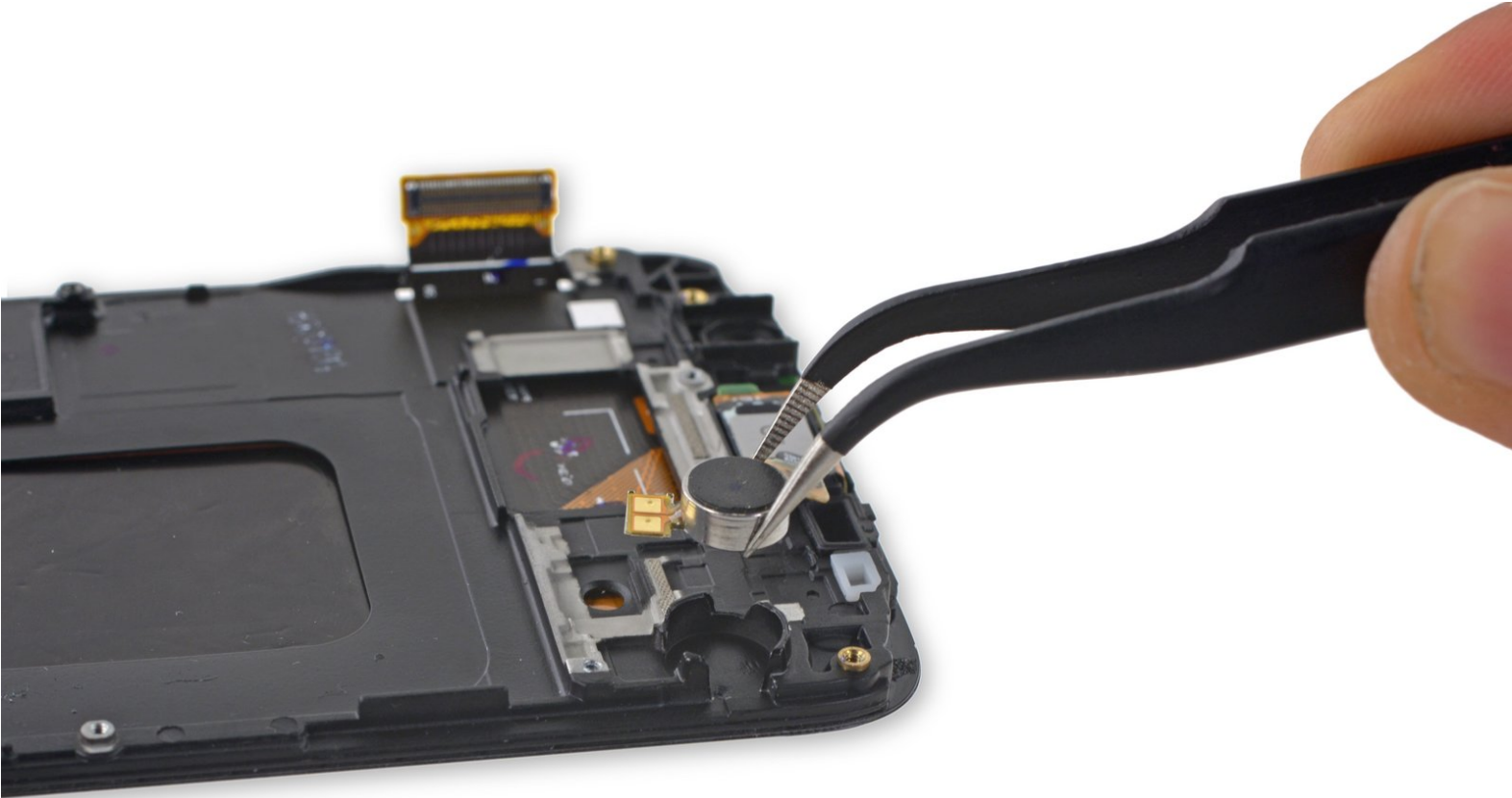




Samsung Galaxy S6 Vibrator Replacement

Written By: Dozuki System



INTRODUCTION

Use this guide to replace the vibrator in a Samsung Galaxy S6.

This guide involves removing the rear glass. Removing the rear glass destroys the adhesive holding it in place. Follow [this guide](#) to reinstall the rear glass.



TOOLS:

- [SIM Card Eject Tool](#) (1)
- [Heavy-Duty Suction Cups \(Pair\)](#) (1)
- [iFixit Opening Tools](#) (1)
- [iFixit Opening Picks set of 6](#) (1)
- [Spudger](#) (1)
- [iOpener](#) (1)
- [Phillips #00 Screwdriver](#) (1)
- [Tweezers](#) (1)



PARTS:

- [Galaxy S6 Vibrator](#) (1)

Step 1 — Vibrator



- Insert a paper clip or SIM eject tool into the hole in the SIM card slot on the power button side of the phone.
- Press to eject the SIM card tray.

⚠ Don't press too hard or you may damage the SIM card tray.



Step 2



- Remove the SIM card tray from the phone.

Step 3



-  We recommend that you clean your microwave before proceeding, as any nasty gunk on the bottom may end up stuck to the iOpener.
- Place the iOpener in the center of the microwave.
-  For carousel microwaves: Make sure the plate spins freely. If your iOpener gets stuck, it may overheat and burn.

Step 4



- Heat the iOpener for **thirty seconds**.
- Throughout the repair procedure, as the iOpener cools, reheat it in the microwave for an additional thirty seconds at a time.

- ⚠ Be careful not to overheat the iOpener during the repair. Overheating may cause the iOpener to burst.
- ⚠ Never touch the iOpener if it appears swollen.
- ⚠ If the iOpener is still too hot in the middle to touch, continue using it while waiting for it to cool down some more before reheating. A properly heated iOpener should stay warm for up to 10 minutes.

Step 5



- Remove the iOpener from the microwave, holding it by one of the two flat ends to avoid the hot center.

⚠ The iOpener will be very hot, so be careful when handling it. Use an oven mitt if necessary.

Step 6



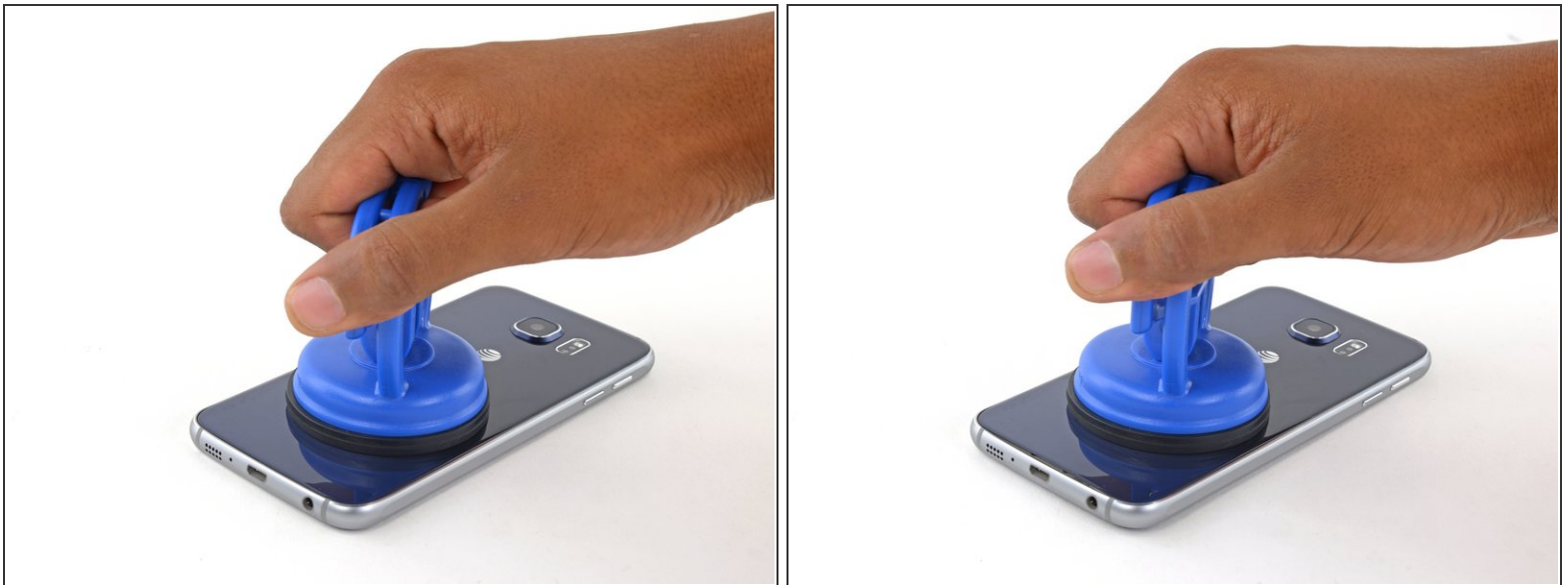
- ⓘ Place the phone facedown.
- ⓘ If your glass is shattered, put packing tape over the entire panel to hold it together during the removal process.
- Lay the iOpener over the panel for about 60 seconds to loosen the adhesive around the edge of the glass.
- Shift the iOpener to heat the remaining section of the panel for another 60 seconds.

Step 7



- Attach a heavy-duty suction cup to the lower half of the rear glass panel.
- Secure the suction cup by raising the hinged handle and flipping the latch to clamp both handles in place.

Step 8



- ① The following steps involve using an opening pick to separate the rear panel from the midframe. If the adhesive is too strong, reapply heat with the iOpener.
- Using the suction cup, apply pressure to the middle section of the panel while pulling up the lower edge by pivoting your wrist.

Step 9



- Once you've opened a large enough gap, insert an opening pick between the rear glass and the midframe.

Step 10



- Slide the opening pick around the bottom left corner of the rear glass panel.

Step 11



- Slide the pick along the power button side of the phone.

Step 12



- Slide the opening pick across the top of the phone.

Step 13



- Slide the opening pick down along the volume buttons side of the phone.

Step 14



- Pull up on the rear glass panel while holding down the midframe to separate the components.
 - ❗ If you encounter too much resistance from the adhesive, slide the opening pick under the glass a few more times.

Step 15



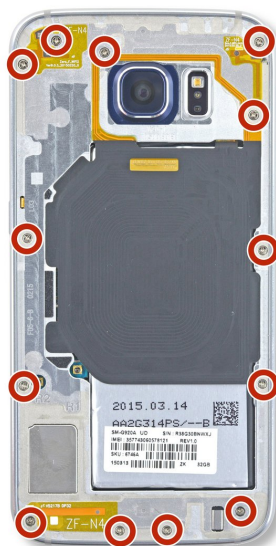
- Insert an opening pick between the rear panel and the midframe.
- Slide the pick along the top of the phone to loosen the remaining adhesive.
- Twist the pick to separate the two pieces.

Step 16



- ① At this point, the rear glass panel should be fully separated from the body of the phone, although the adhesive strip may be attached to both sides.
- Pull the rear panel up and away to completely separate it.
- ✚ Follow [this guide](#) to reinstall the rear glass.

Step 17



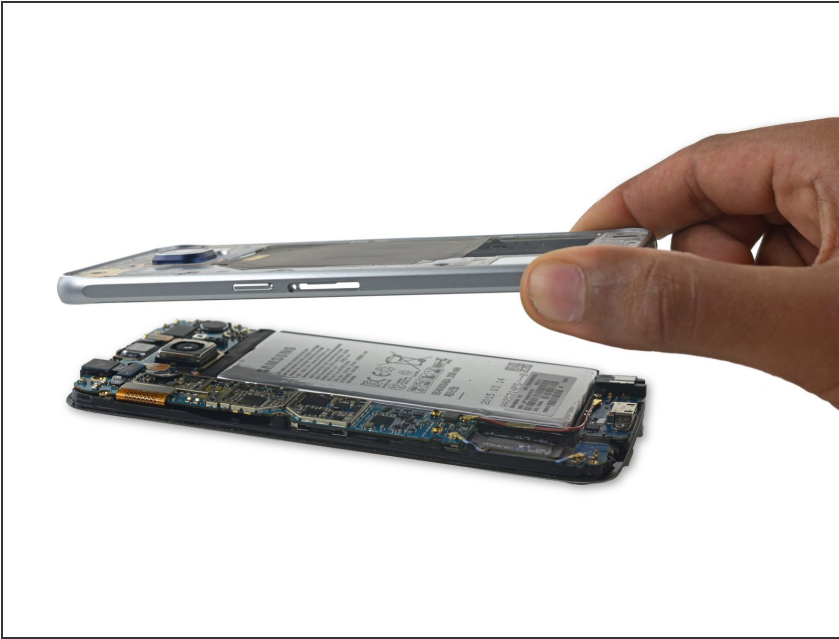
- Remove the thirteen 3.5mm Phillips #00 screws securing the midframe to the phone.

Step 18



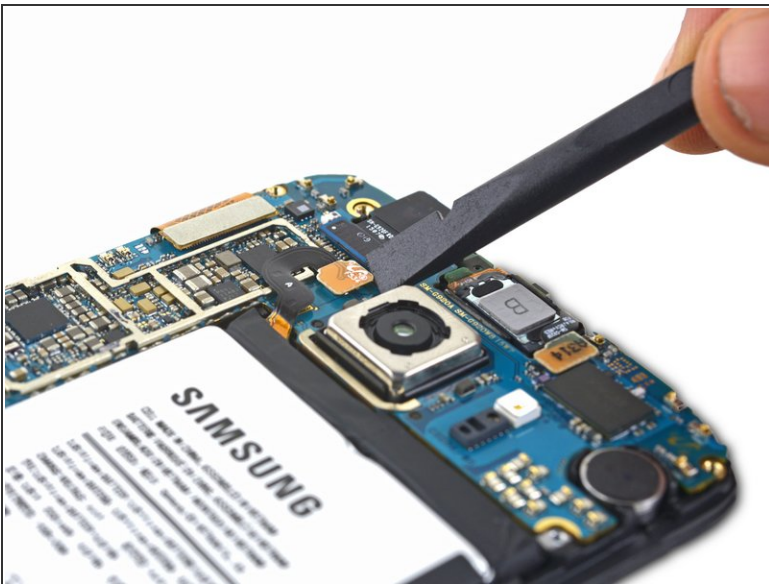
- Firmly grasp the edge of the midframe assembly.
- Lift up on the midframe assembly while pushing down on the battery to separate the midframe assembly from the rest of the phone.

Step 19



- Lift the midframe assembly up to separate it from the rest of the phone.

Step 20



- Use the flat end of the spudger to disconnect the battery connector from its socket on the motherboard.

Step 21



- Insert a plastic opening pick between the case and the battery.

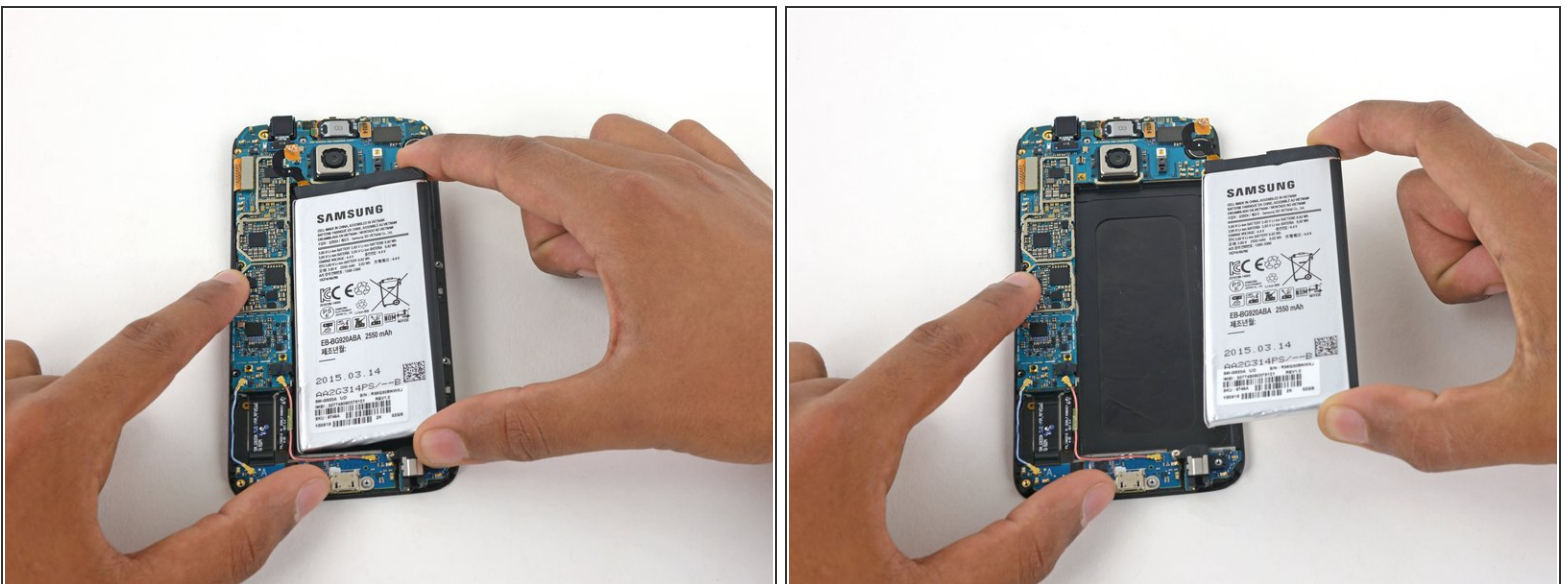
⚠ Be careful to keep the pick as flat as possible to avoid bending the battery, which may damage it and cause it to release dangerous chemicals.

- Push the pick further in to separate the battery from the phone.

ⓘ If the battery is too strongly adhered for the opening pick, place a warm iOpener over the battery to loosen the adhesive.

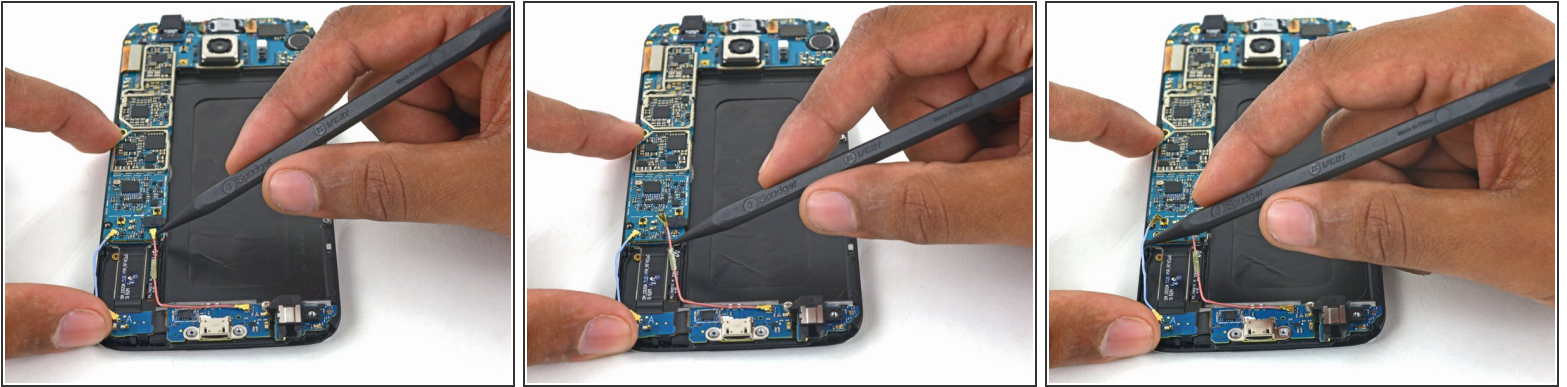
⚠ Do not pry against the motherboard or you may damage the phone.

Step 22



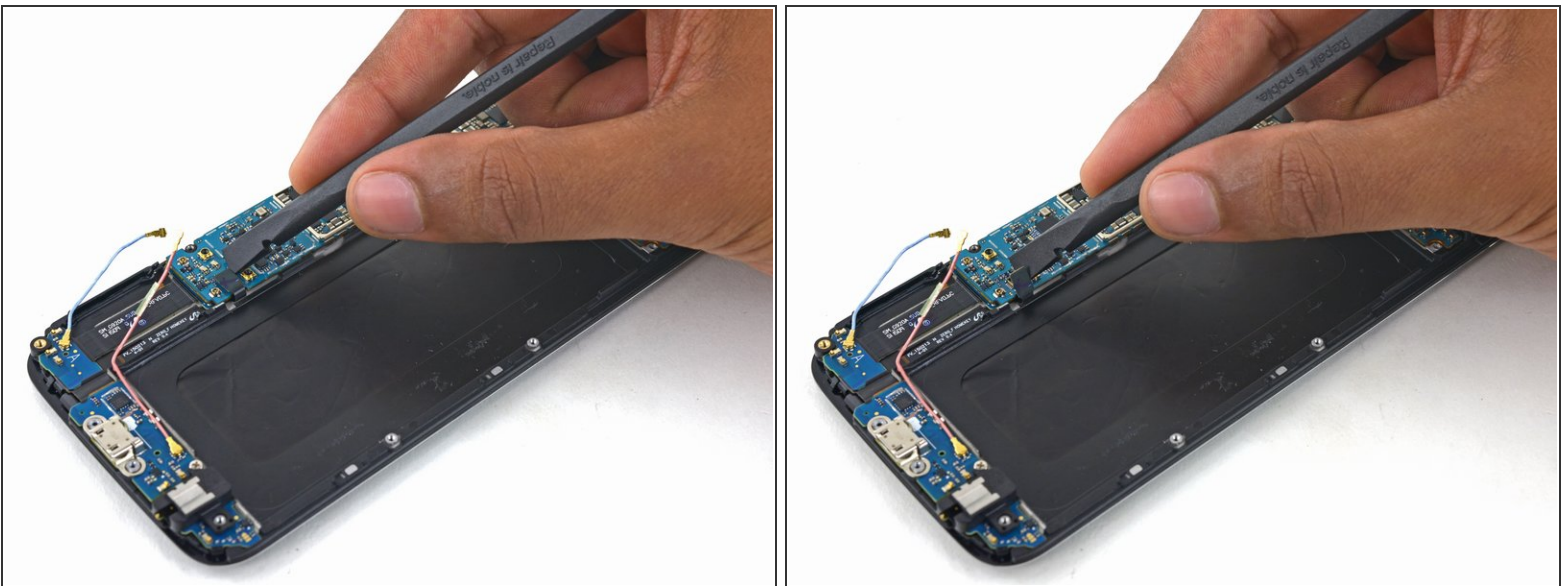
- Remove the battery from the phone.

Step 23



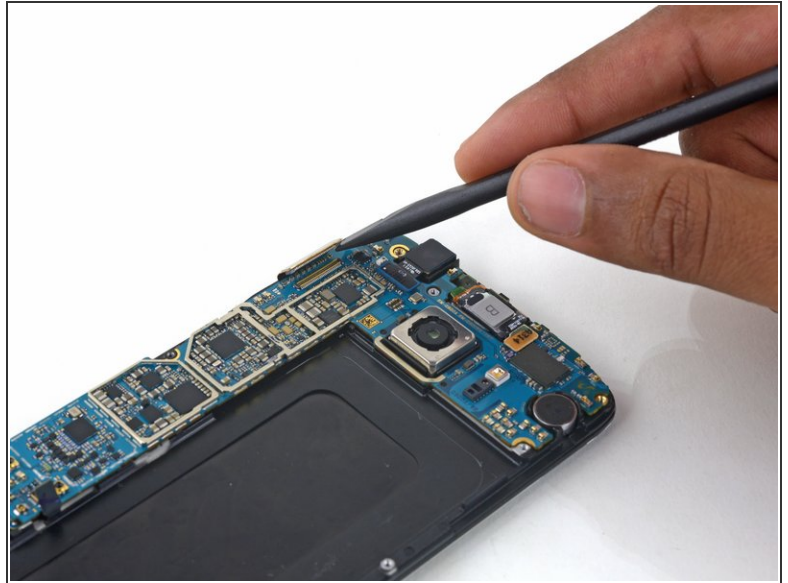
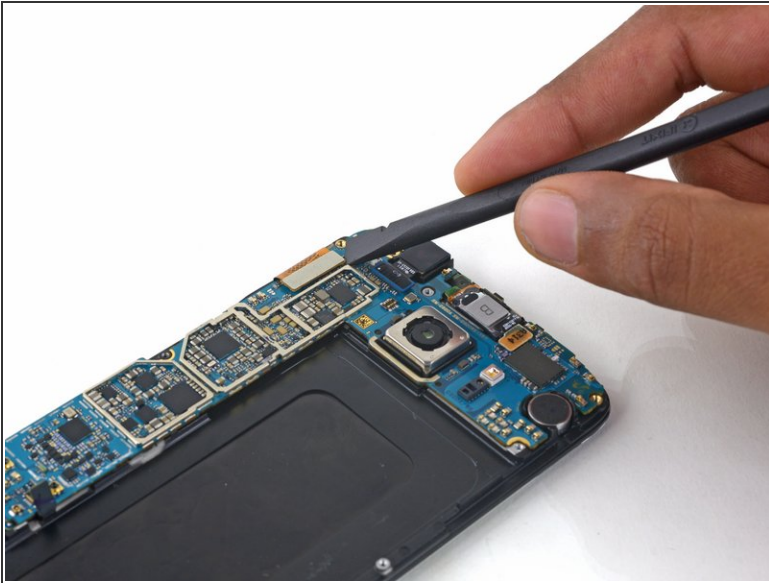
- Use the pointed edge of a spudger to disconnect the Bluetooth and Wi-Fi antenna cable connectors from their sockets on the motherboard.

Step 24



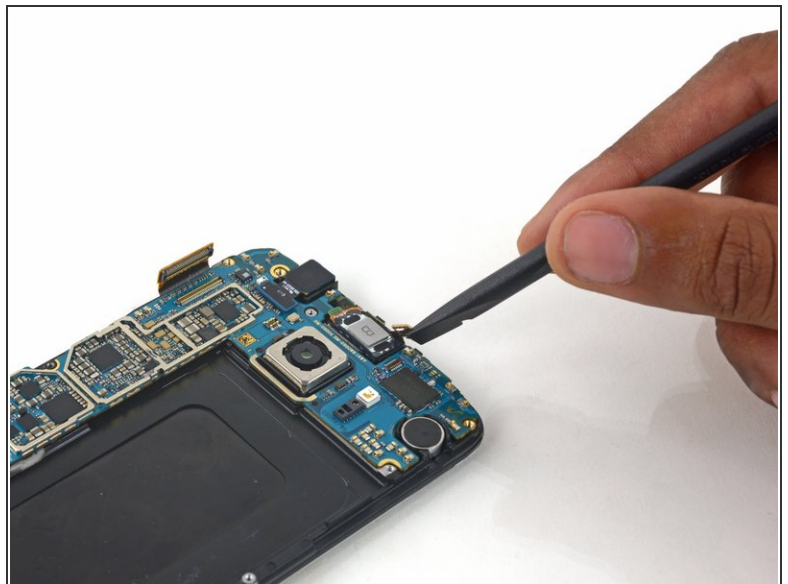
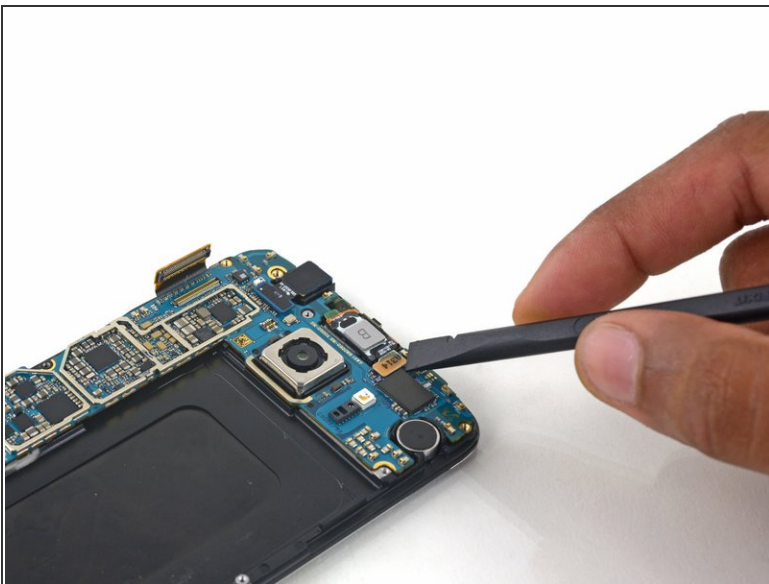
- Use the flat end of the spudger to disconnect the home button connector.

Step 25



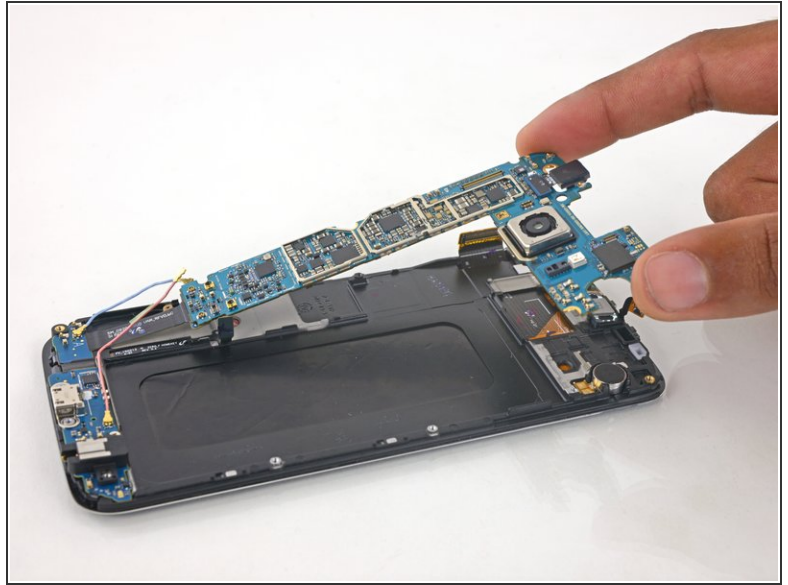
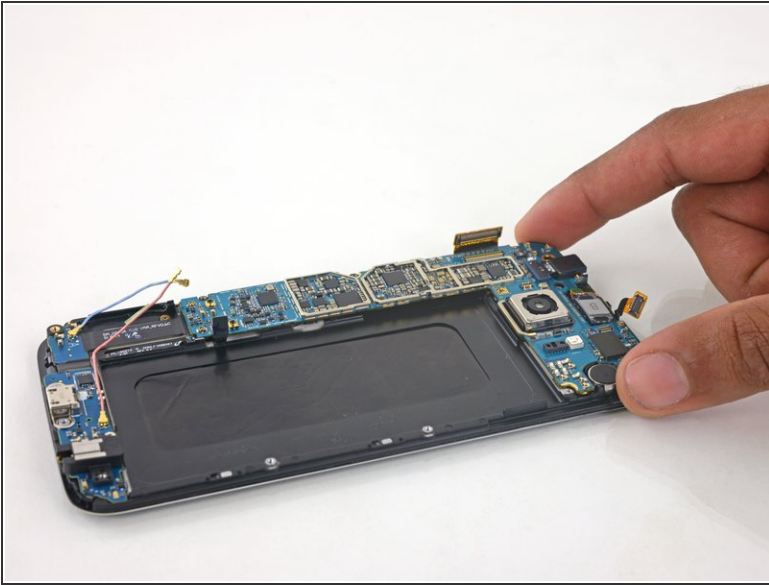
- Use the flat end of a spudger to disconnect the display assembly cable from the motherboard.

Step 26



- Disconnect the earpiece speaker assembly cable connector from the motherboard.

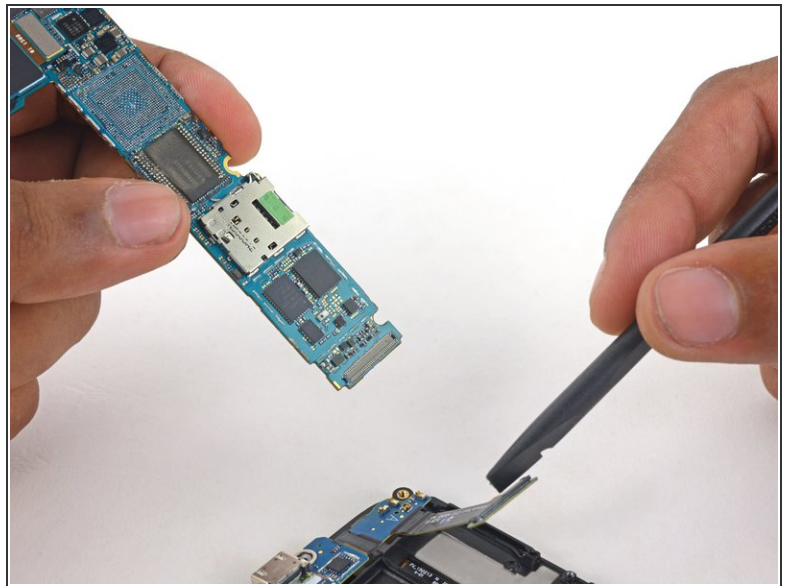
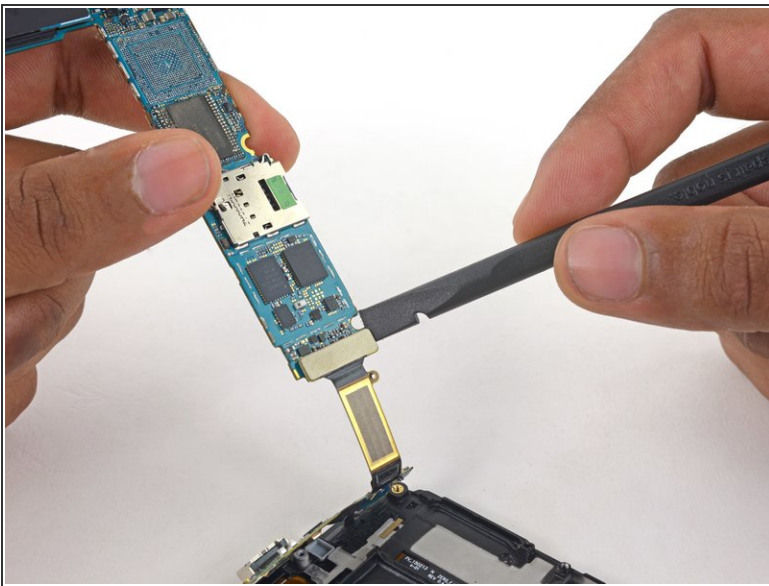
Step 27



- Lift the camera-side end of the motherboard to separate it from the display frame.

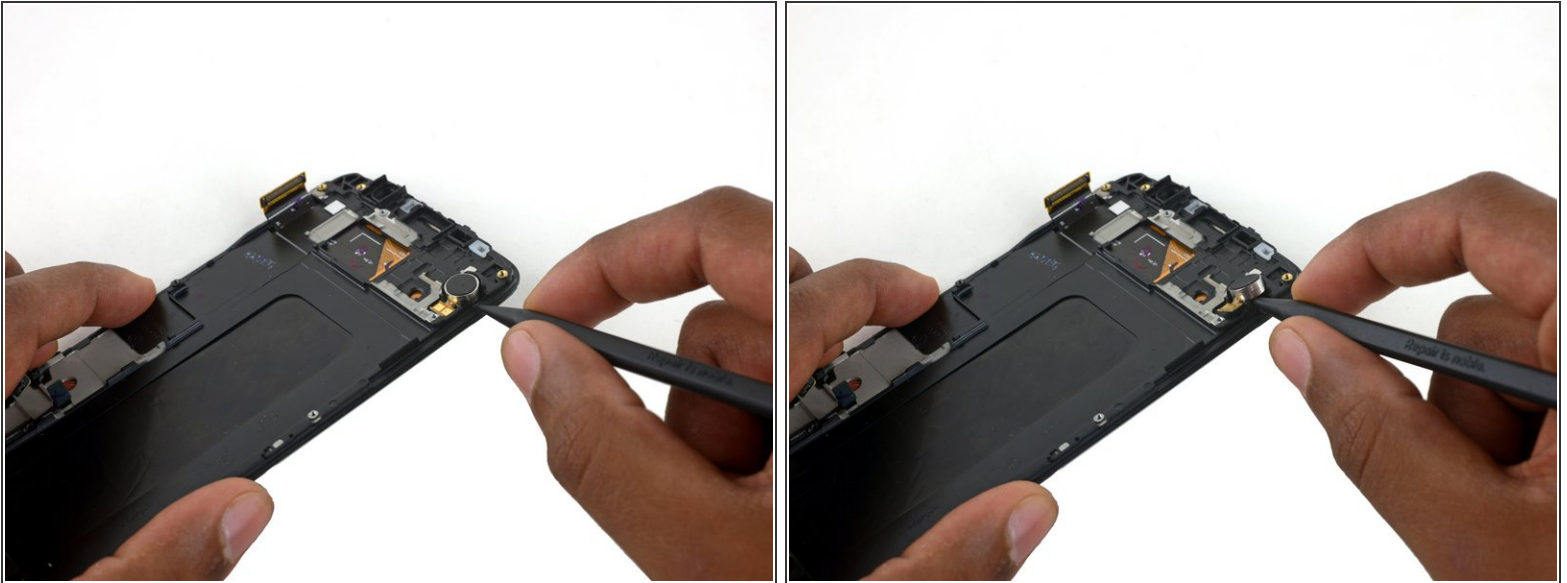
⚠ Do **not** fully remove the motherboard yet—it is still attached to the daughterboard via a ribbon cable on the underside of the motherboard.

Step 28



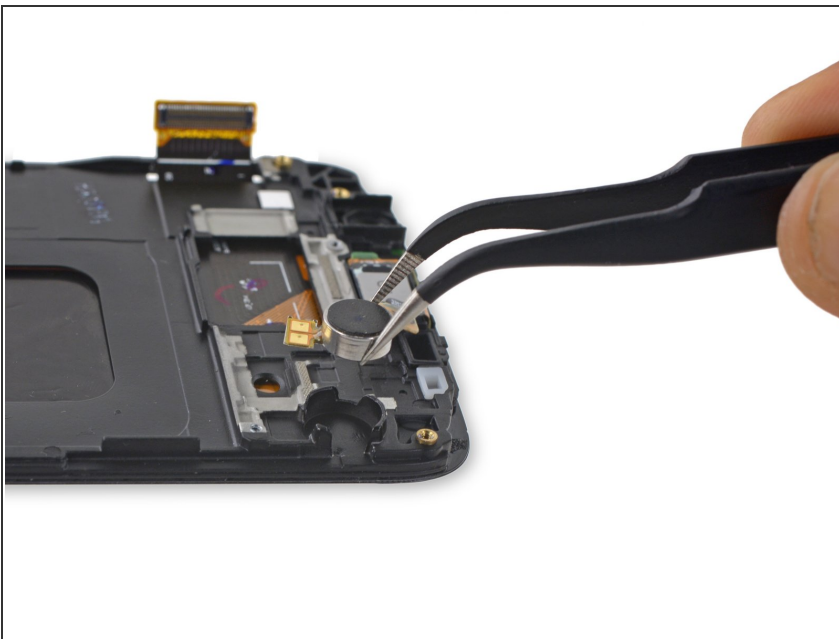
- Disconnect the daughterboard ribbon cable connector from its socket on the underside of the motherboard.

Step 29



- Pry the vibrator up from the display assembly with the point of a spudger.
- Push to pry up the vibrator and its spring-contact connector.

Step 30



- Remove the vibrator.

To reassemble your device, follow these instructions in reverse order. When reinstalling the rear glass, refer to the [rear glass adhesive replacement guide](#).