



Samsung Galaxy S6 Volume Buttons Replacement

Written By: Dozuki System



INTRODUCTION

Use this guide to replace the volume buttons in your Samsung Galaxy S6.

This guide involves removing the rear glass. Removing the rear glass destroys the adhesive holding it in place. Follow [this guide](#) to reinstall the rear glass.



TOOLS:

- [Heavy-Duty Suction Cups \(Pair\)](#) (1)
- [iOpener](#) (1)
- [Phillips #00 Screwdriver](#) (1)
- [Spudger](#) (1)
- [Tweezers](#) (1)
- [iFixit Opening Picks set of 6](#) (1)
- [iFixit Opening Tools](#) (1)
- [SIM Card Eject Tool](#) (1)



PARTS:

- [Galaxy S6 Volume Button Cable](#) (1)
- [Galaxy S6 Power and Volume Buttons](#) (1)

Step 1 — Volume Buttons



- Insert a paper clip or SIM eject tool into the hole in the SIM card slot on the power button side of the phone.
- Press to eject the SIM card tray.

⚠ Don't press too hard or you may damage the SIM card tray.

Step 2



- Remove the SIM card tray from the phone.

Step 3



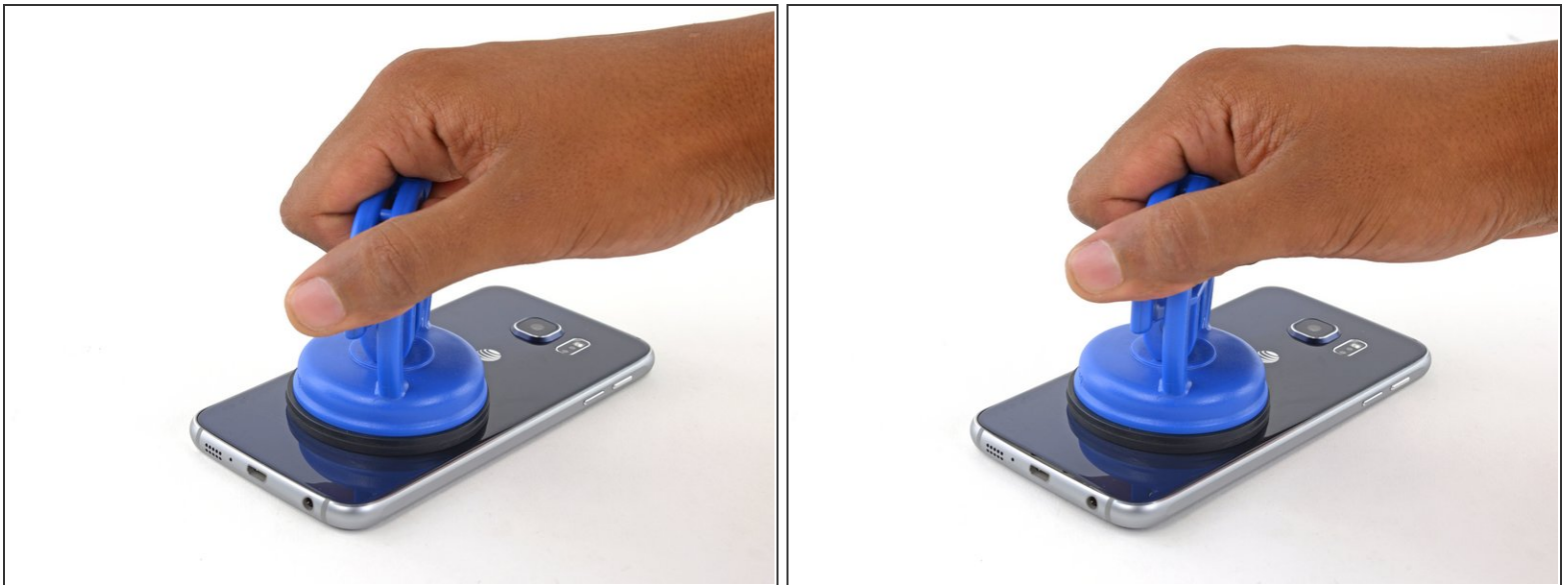
- ⓘ Place the phone facedown.
- ⓘ If your glass is shattered, put packing tape over the entire panel to hold it together during the removal process.
- Lay the iOpener over the panel for about 60 seconds to loosen the adhesive around the edge of the glass.
- Shift the iOpener to heat the remaining section of the panel for another 60 seconds.

Step 4



- Attach a heavy-duty suction cup to the lower half of the rear glass panel.
- Secure the suction cup by raising the hinged handle and flipping the latch to clamp both handles in place.

Step 5



- ① The following steps involve using an opening pick to separate the rear panel from the midframe. If the adhesive is too strong, reapply heat with the iOpener.
- Using the suction cup, apply pressure to the middle section of the panel while pulling up the lower edge by pivoting your wrist.

Step 6



- Once you've opened a large enough gap, insert an opening pick between the rear glass and the midframe.

Step 7



- Slide the opening pick around the bottom left corner of the rear glass panel.

Step 8



- Slide the pick along the power button side of the phone.

Step 9



- Slide the opening pick across the top of the phone.

Step 10



- Slide the opening pick down along the volume buttons side of the phone.

Step 11



- Pull up on the rear glass panel while holding down the midframe to separate the components.
 - ❗ If you encounter too much resistance from the adhesive, slide the opening pick under the glass a few more times.

Step 12



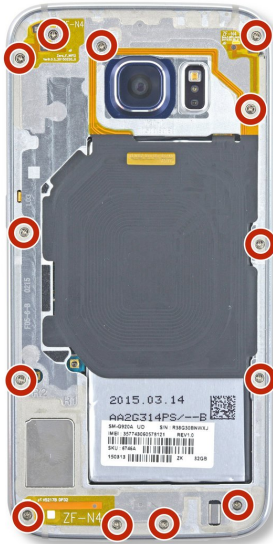
- Insert an opening pick between the rear panel and the midframe.
- Slide the pick along the top of the phone to loosen the remaining adhesive.
- Twist the pick to separate the two pieces.

Step 13



- ① At this point, the rear glass panel should be fully separated from the body of the phone, although the adhesive strip may be attached to both sides.
- Pull the rear panel up and away to completely separate it.
- ✦ Follow [this guide](#) to reinstall the rear glass.

Step 14



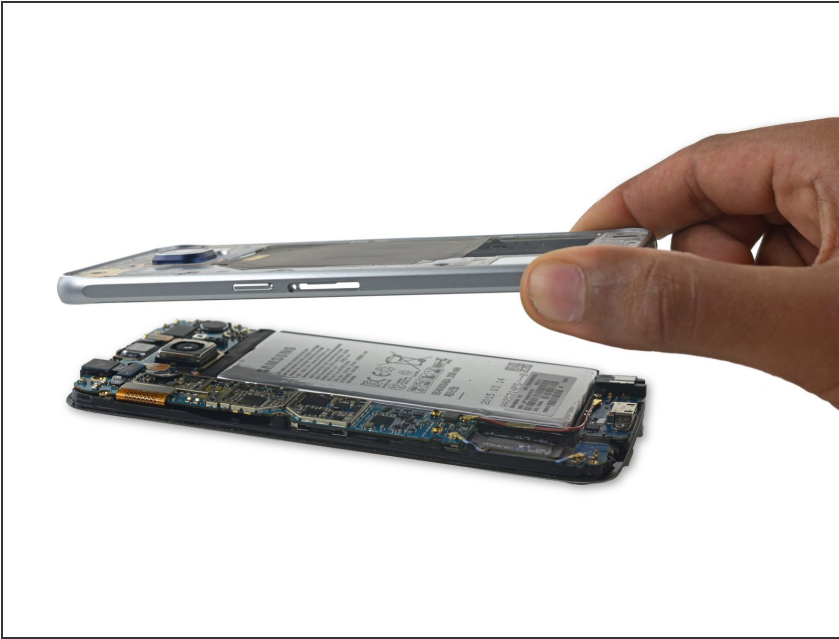
- Remove the thirteen 3.5mm Phillips #00 screws securing the midframe to the phone.

Step 15



- Firmly grasp the edge of the midframe assembly.
- Lift up on the midframe assembly while pushing down on the battery to separate the midframe assembly from the rest of the phone.

Step 16



- Lift the midframe assembly up to separate it from the rest of the phone.

Step 17



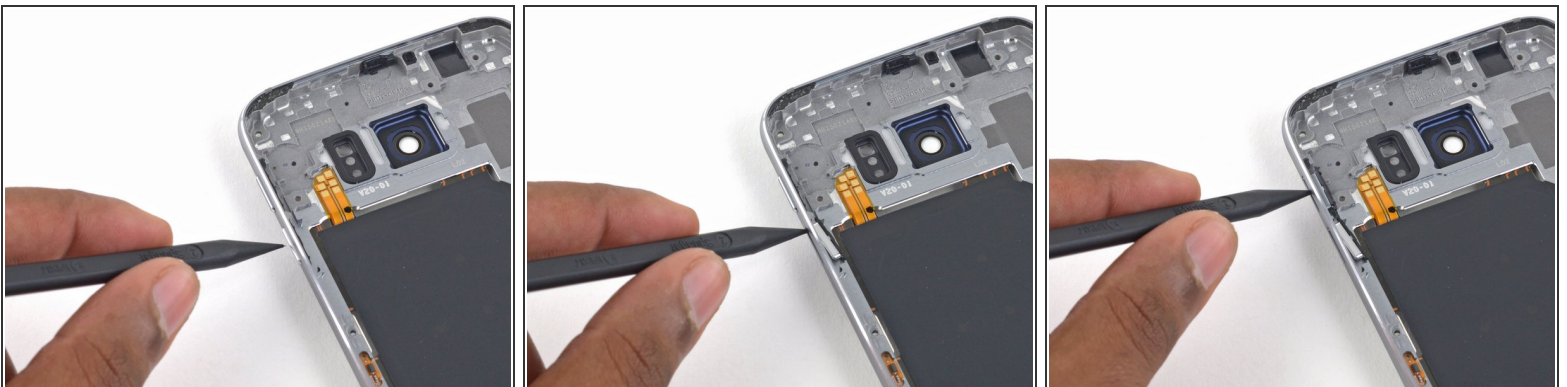
- Use the pointed end of the spudger to pry up the volume button contact connectors.

Step 18



- Use the flat end of the spudger to pry the volume buttons out of the midframe.

Step 19



- Use the pointed end of the spudger to push the button covers out of the midframe.

Step 20



- Use tweezers to remove the button covers.

To reassemble your device, follow these instructions in reverse order. When reinstalling the rear glass, refer to the [rear glass adhesive replacement guide](#).