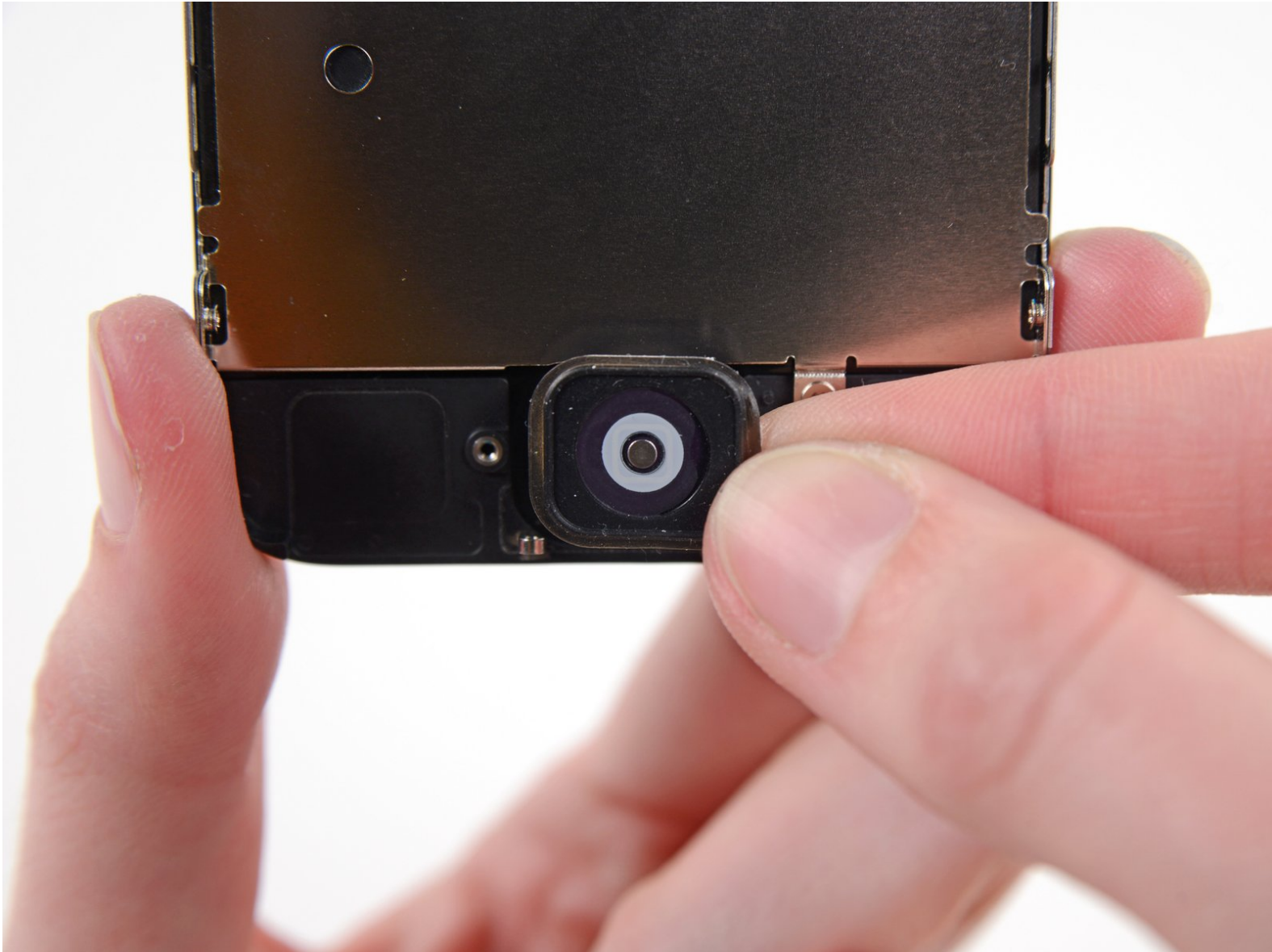




iPhone 5c Home Button Replacement

Written By: Dozuki System



INTRODUCTION

Use this guide to replace the home button cover. Follow the [invalid guide link] to replace the actual mechanical home button.

You can also use this guide to replace the [home button bracket](#).

[video: https://www.youtube.com/watch?v=lu6sjxZN_vI]



TOOLS:

- [P2 Pentalobe Screwdriver iPhone](#) (1)
- [Phillips #000 Screwdriver](#) (1)
- [iFixit Opening Tools](#) (1)
- [Suction Handle](#) (1)
- [Spudger](#) (1)



PARTS:

- [iPhone 5c Home Button Bracket](#) (1)
- [iPhone 5 and 5c Home Button](#) (1)

Step 1 — Home Button



- If your display glass is cracked, keep further breakage contained and prevent bodily harm during your repair by taping the glass.
- Lay overlapping strips of clear packing tape over the iPhone's display until the whole face is covered.
 - ⓘ This will keep glass shards contained and provide structural integrity when prying and lifting the display.

⚠ Wear safety glasses to protect your eyes from any glass shaken free during the repair.

Step 2



⚠ Before you proceed, discharge your iPhone battery below 25%. A charged lithium-ion battery can catch fire and/or explode if accidentally punctured.

- Power off your iPhone before beginning disassembly.
- Remove the two 3.8 mm Pentalobe screws next to the Lightning connector.

Step 3 — iSclack Opening Procedure



i The next two steps demonstrate using the , a great tool for safely opening the iPhone 5c that we recommend for anyone doing more than one repair on an iPhone 5, 5s, or 5c. **If you aren't using the iSclack, skip to [\[invalid guide link\]](#).**

- Close the handle on the iSclack, opening the suction-cup jaws.
- Place the bottom of your iPhone in between the suction cups, against the plastic depth gauge.
 - The top suction cup should rest just above the home button.
- Open the handles to close the jaws of the iSclack. Center the suction cups and press them firmly onto the top and bottom of the iPhone.

Step 4



- Hold onto your iPhone securely and close the handle of the iSclack to separate the suction cups, pulling the front panel up from the rear case.
- The iSclack is designed to safely open your iPhone just enough to separate the pieces, but not enough to damage any cables.
- ⓘ Peel the two suction cups off your iPhone.
- **Skip the next three steps and continue on to [\[invalid guide link\]](#).**

Step 5 — Manual Opening Procedure



- Press a suction cup onto the screen, just above the home button.
- ⓘ Be sure the cup is completely on the screen to get a tight seal.

Step 6



- i** Make sure the suction cup is firmly attached to the front panel assembly.

 - While holding the iPhone down with one hand, pull up on the suction cup to slightly separate the front panel assembly from the rear case.
- i** Take your time and apply firm, constant force. The display assembly is a much tighter fit than most devices.

 - With a plastic opening tool, begin to gently pry the rear case down, away from the display assembly, while you pull up with the suction cup.
- i** There are several clips attaching the front panel assembly to the rear case, so you may need to use a combination of the suction cup and plastic opening tool to free the front panel assembly.

Step 7



- Pull the plastic nub to release the vacuum seal on the suction cup.
- Remove the suction cup from the display assembly.

Step 8



- Lift the home button end of the front panel up to gain access to the connectors near the top of the phone.
- Open the display to about a 90° angle, and lean it against something to keep it propped up while you're working on the phone.
 - In a pinch, you can use an unopened canned beverage to hold the display.
- Add a rubber band to keep the display securely in place while you work. This prevents undue strain on the display cables.

Step 9



- Remove the two 1.6 mm Phillips #000 screws securing the metal battery connector bracket to the logic board.

Step 10



- Remove the metal battery connector bracket from the iPhone.

Step 11



- Use the flat edge of a spudger to pry the battery connector up off the logic board.

Step 12



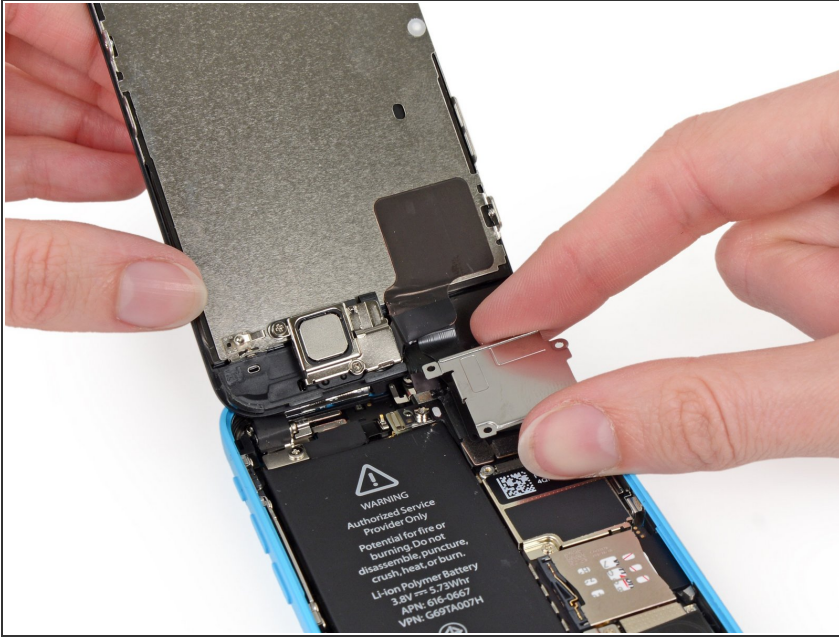
- Remove the following Phillips #000 screws securing the front panel assembly cable bracket to the logic board:

- Two 1.3 mm screws
- One 1.7 mm screw
- One 3.25 mm screw

⚠ It is especially important to keep track of your screws in this step for reassembly. Accidentally using the 3.25 mm screw or the 1.7 mm screw in the bottom right hole will result in significant damage to the logic board causing the phone to no longer boot properly.

⚠ Be careful not to over-tighten the screws. If they don't fit easily when you are securing them, they may be the wrong size, don't force them.

Step 13



- Remove the front panel assembly cable bracket from the logic board.

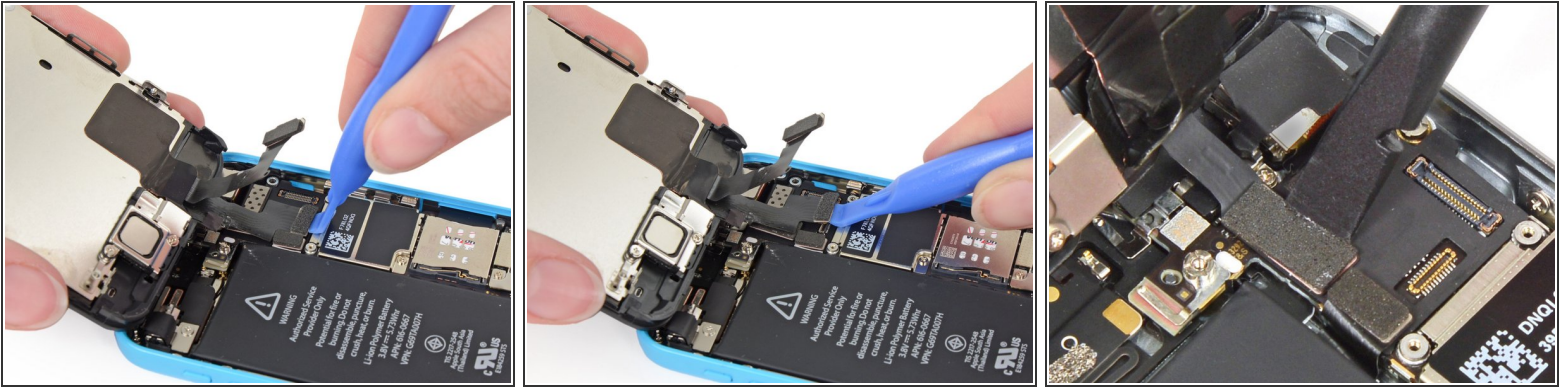
Step 14



- Use a plastic opening tool to disconnect the front-facing camera and sensor cable connector.

⚠ Be sure to **only** pry up on the connector, and not on the socket on the logic board.

Step 15

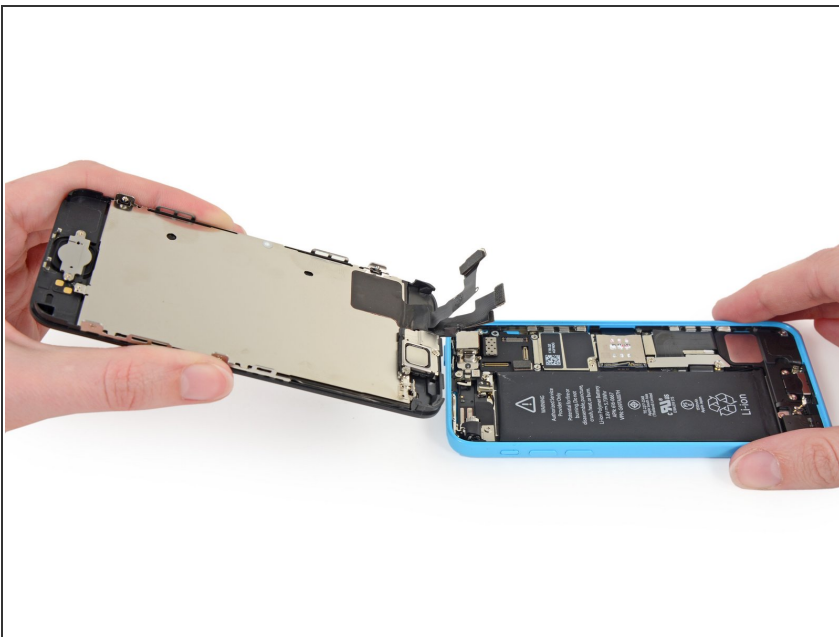


- Use a plastic opening tool to disconnect the LCD cable connector.

⚠ The LCD and Digitizer connectors are on the same cable assembly, so prying the LCD connector up should disconnect both connectors. Double check that the two cables are fully disconnected before removing the display.

- ☑ When reassembling your phone, the LCD cable may pop off its connector. A blank screen, or white lines on the display could be caused by a loose connection. Should this happen, reconnect the cable and power cycle your phone. The best way to power cycle your phone is to disconnect and reconnect the battery.

Step 16



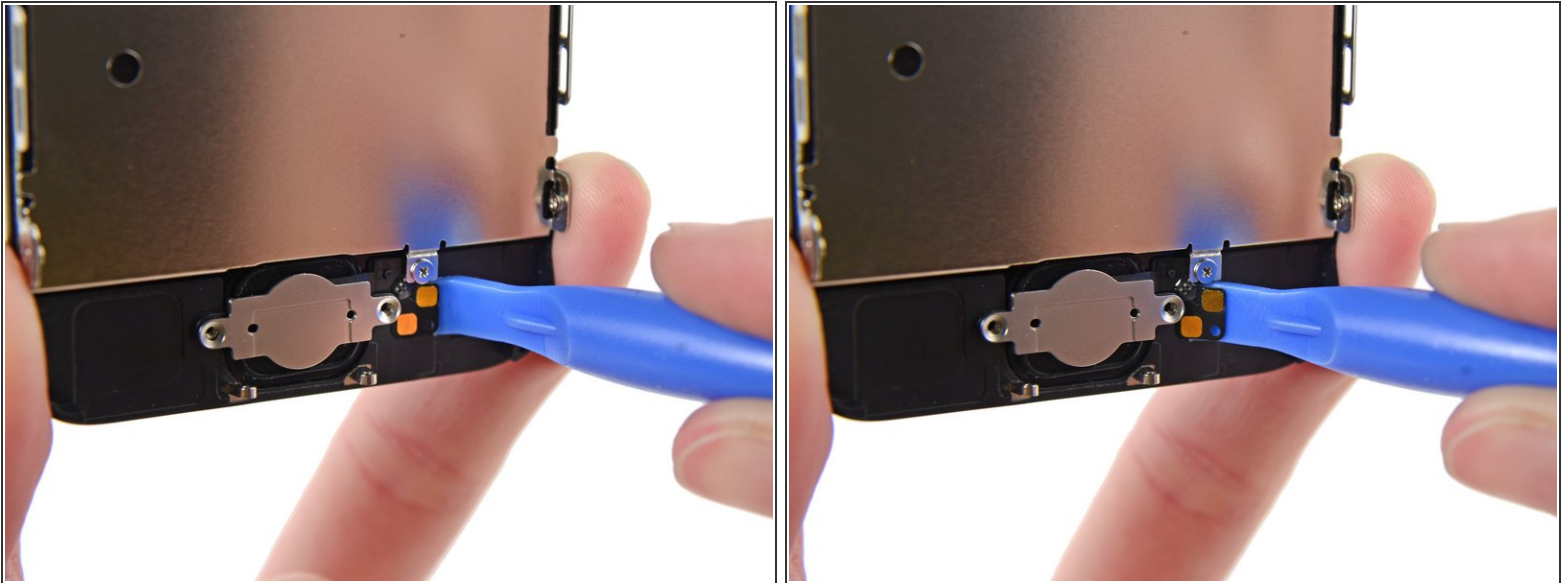
- Remove the front panel assembly from the rear case.

Step 17



- Remove the two 1.3 mm Phillips #000 screws securing the home button bracket to the display assembly.

Step 18

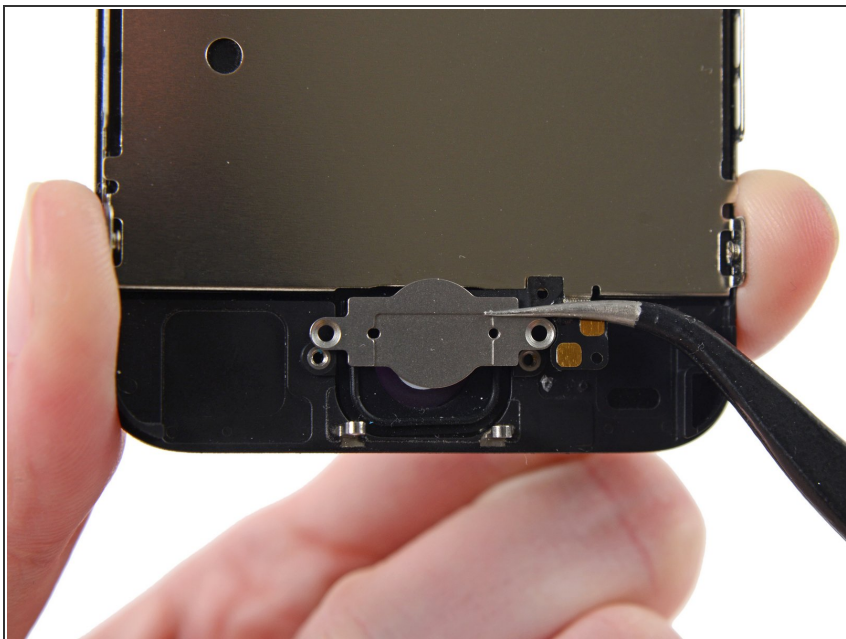


- Use a plastic opening tool to pry the edge of the home button ribbon cable up from the display assembly.
- Start under the contact points on the right and work to the left.

⚠ Starting from the left and going right may rip your ribbon cable. The contacts are well adhered to the front panel and should be peeled up first.

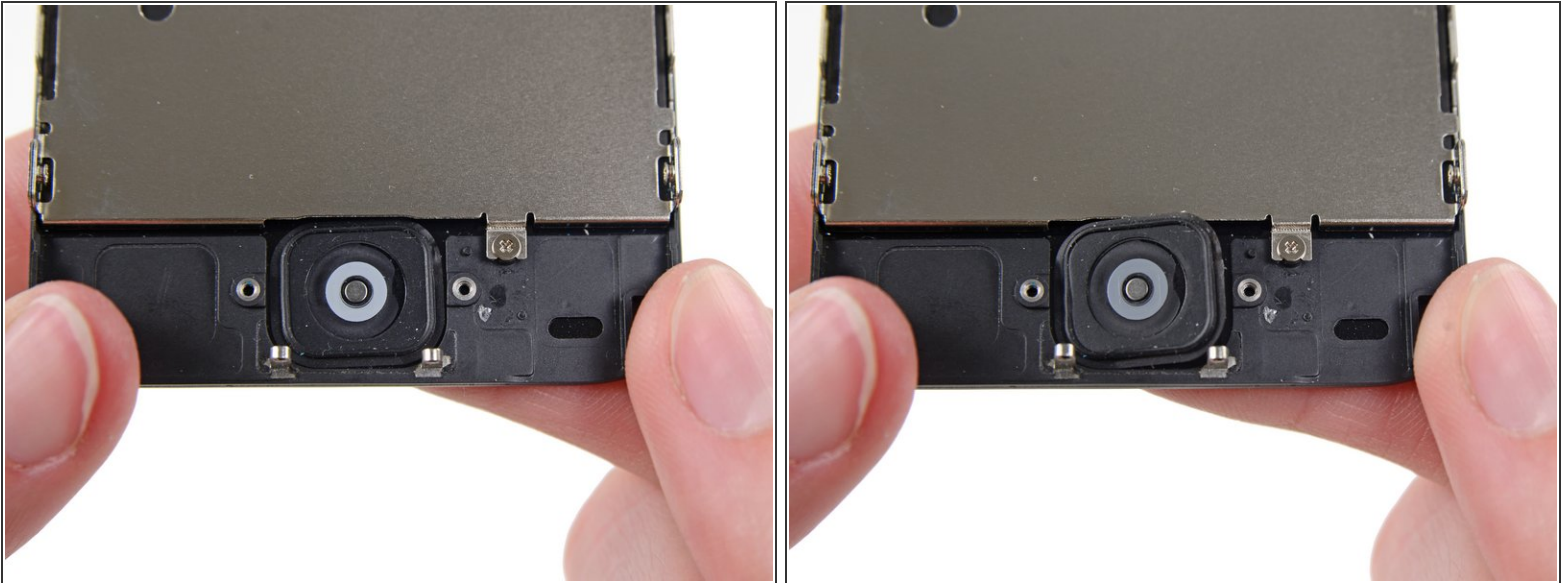
- ① If you have trouble sliding the plastic opening tool under the contact points, flip the tool over and gently push against the right side of the contact cable to loosen the adhesive, then try again.

Step 19



- Remove the home button ribbon cable from the display assembly.
- ★ If you're installing a new home button ribbon cable, be sure to keep the metal bracket and transfer it to your new ribbon cable during reassembly.

Step 20

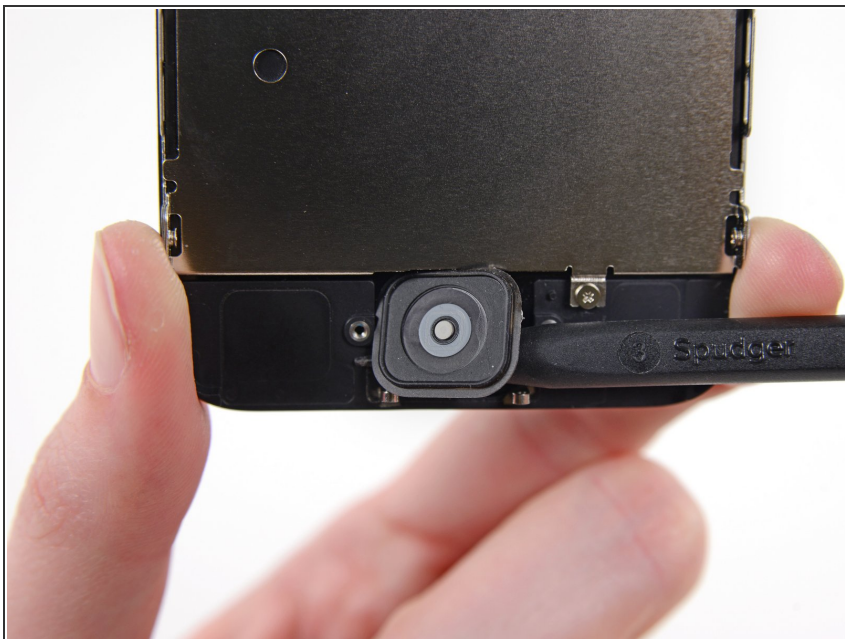


- Gently push the top right corner of the home button up away from the front panel.

⚠ Do not push the home button all the way through; you only need to get a corner free so that you can pry it out with a spudger.

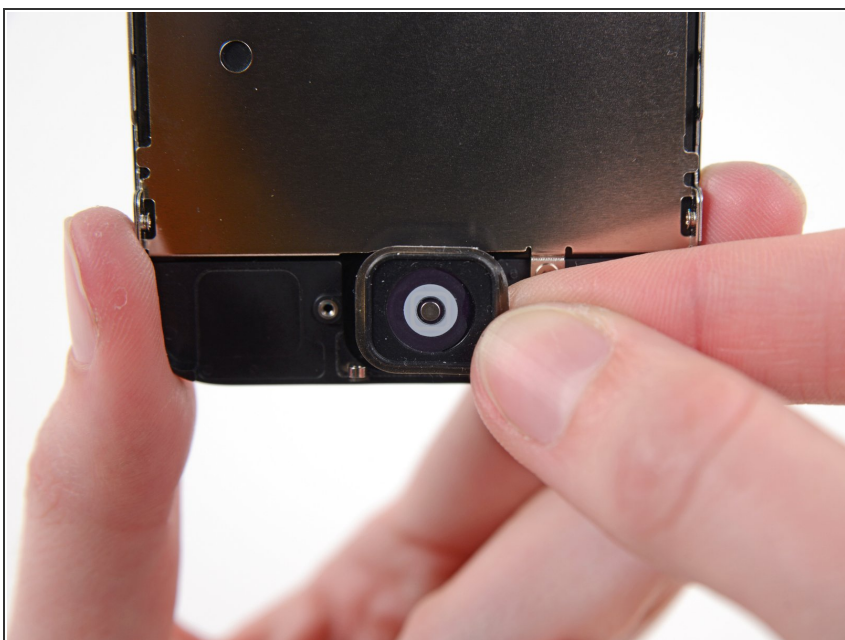
- ⓘ This membrane is very thin. If you feel like you are going to tear the button, apply heat and try again.

Step 21



- Peel the home button the rest of the way off of the display by prying gently with a spudger.

Step 22



- Remove the home button assembly from the front panel.

To reassemble your device, follow these instructions in reverse order.