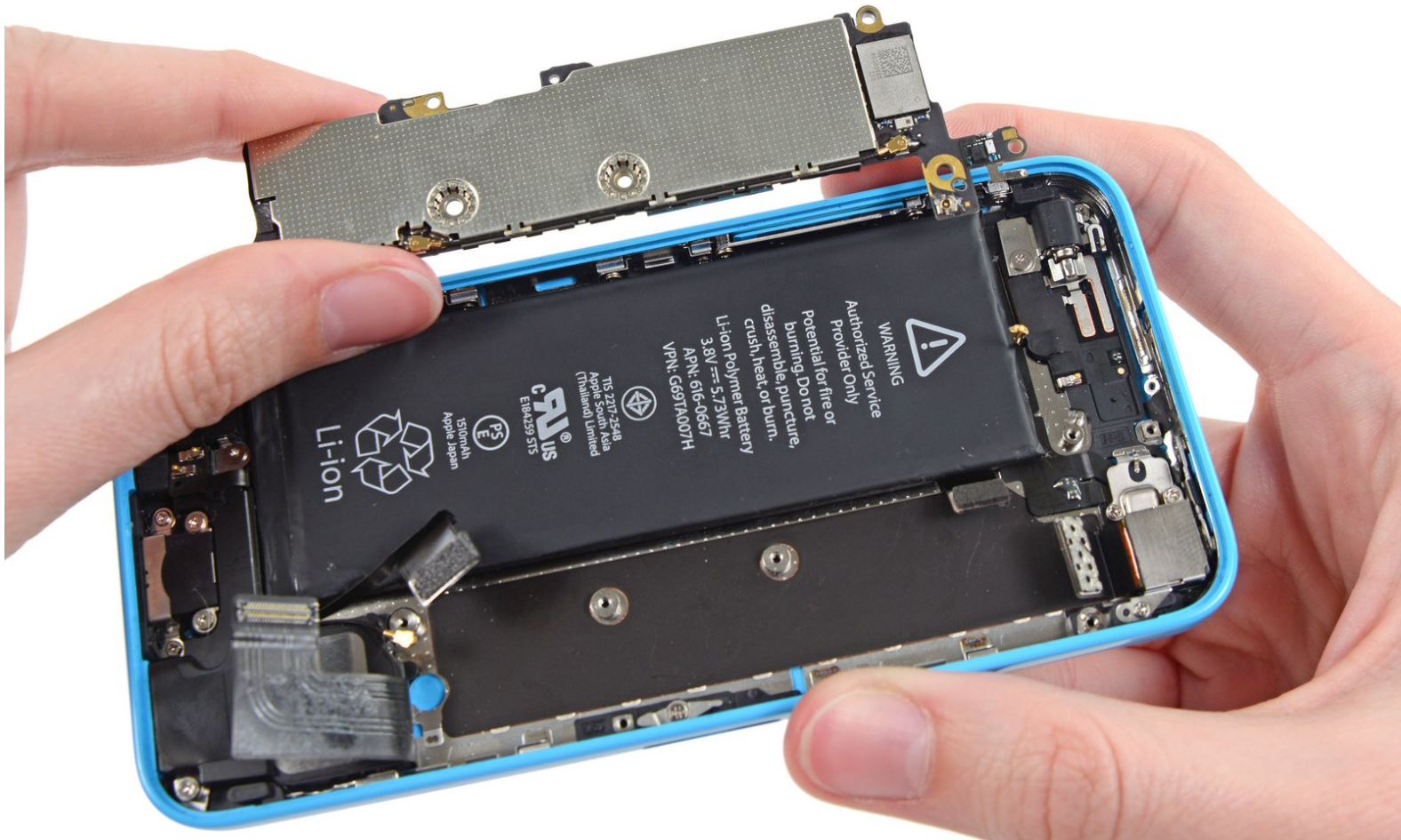




iPhone 5c Logic Board Replacement

Written By: Dozuki System



INTRODUCTION

Use this guide to replace a faulty logic board in your iPhone 5c.

[video: <https://www.youtube.com/watch?v=Zdkk7MYT3-Q>]



TOOLS:

- [P2 Pentalobe Screwdriver iPhone](#) (1)
- [Phillips #000 Screwdriver](#) (1)
- [iFixit Opening Tools](#) (1)
- [Suction Handle](#) (1)
- [Spudger](#) (1)
- [2.5 mm Flathead Screwdriver](#) (1)
- [SIM Card Eject Tool](#) (1)
- [Tweezers](#) (1)



PARTS:

- [iPhone 5c Logic Board](#) (1)

Step 1 — Logic Board



- If your display glass is cracked, keep further breakage contained and prevent bodily harm during your repair by taping the glass.
- Lay overlapping strips of clear packing tape over the iPhone's display until the whole face is covered.
 - ⓘ This will keep glass shards contained and provide structural integrity when prying and lifting the display.

⚠ Wear safety glasses to protect your eyes from any glass shaken free during the repair.

Step 2



⚠ Before you proceed, discharge your iPhone battery below 25%. A charged lithium-ion battery can catch fire and/or explode if accidentally punctured.

- Power off your iPhone before beginning disassembly.
- Remove the two 3.8 mm Pentalobe screws next to the Lightning connector.

Step 3 — iSclack Opening Procedure



i The next two steps demonstrate using the , a great tool for safely opening the iPhone 5c that we recommend for anyone doing more than one repair on an iPhone 5, 5s, or 5c. **If you aren't using the iSclack, skip to [\[invalid guide link\]](#).**

- Close the handle on the iSclack, opening the suction-cup jaws.
- Place the bottom of your iPhone in between the suction cups, against the plastic depth gauge.
 - The top suction cup should rest just above the home button.
- Open the handles to close the jaws of the iSclack. Center the suction cups and press them firmly onto the top and bottom of the iPhone.

Step 4



- Hold onto your iPhone securely and close the handle of the iSclack to separate the suction cups, pulling the front panel up from the rear case.
- The iSclack is designed to safely open your iPhone just enough to separate the pieces, but not enough to damage any cables.
- ⓘ Peel the two suction cups off your iPhone.
- **Skip the next three steps and continue on to [\[invalid guide link\]](#).**

Step 5 — Manual Opening Procedure



- Press a suction cup onto the screen, just above the home button.
- ⓘ Be sure the cup is completely on the screen to get a tight seal.

Step 6



- i** Make sure the suction cup is firmly attached to the front panel assembly.

 - While holding the iPhone down with one hand, pull up on the suction cup to slightly separate the front panel assembly from the rear case.
- i** Take your time and apply firm, constant force. The display assembly is a much tighter fit than most devices.

 - With a plastic opening tool, begin to gently pry the rear case down, away from the display assembly, while you pull up with the suction cup.
- i** There are several clips attaching the front panel assembly to the rear case, so you may need to use a combination of the suction cup and plastic opening tool to free the front panel assembly.

Step 7



- Pull the plastic nub to release the vacuum seal on the suction cup.
- Remove the suction cup from the display assembly.

Step 8



- Lift the home button end of the front panel up to gain access to the connectors near the top of the phone.
- Open the display to about a 90° angle, and lean it against something to keep it propped up while you're working on the phone.
 - In a pinch, you can use an unopened canned beverage to hold the display.
- Add a rubber band to keep the display securely in place while you work. This prevents undue strain on the display cables.

Step 9



- Remove the two 1.6 mm Phillips #000 screws securing the metal battery connector bracket to the logic board.

Step 10



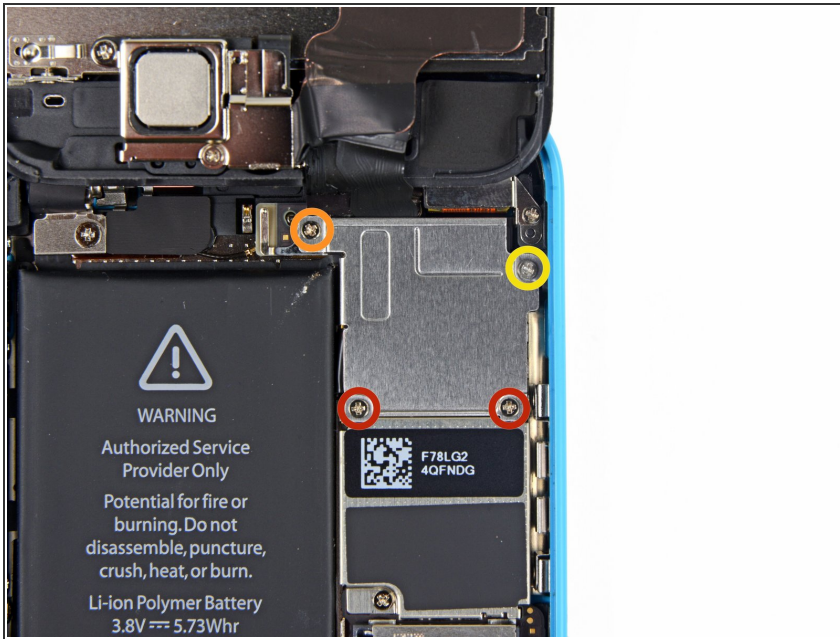
- Remove the metal battery connector bracket from the iPhone.

Step 11



- Use the flat edge of a spudger to pry the battery connector up off the logic board.

Step 12



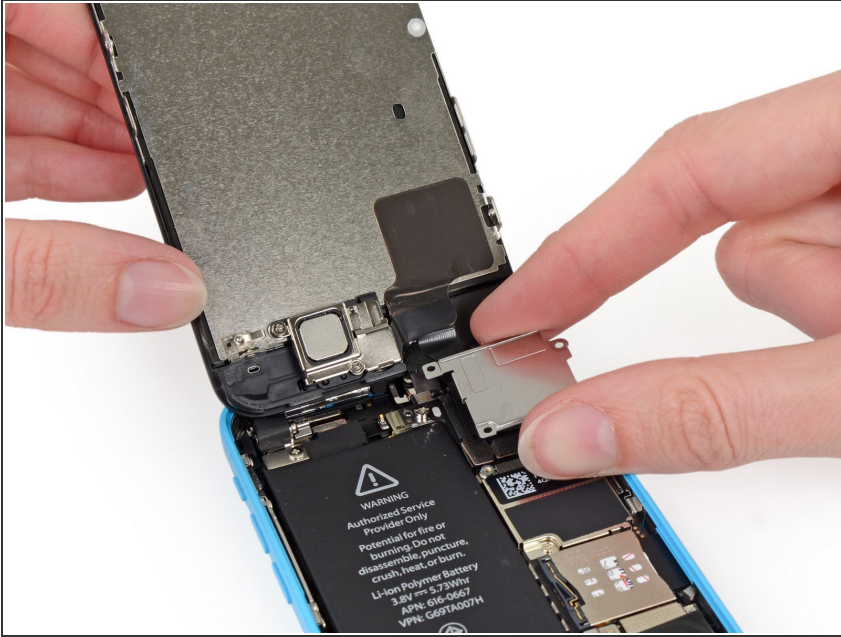
- Remove the following Phillips #000 screws securing the front panel assembly cable bracket to the logic board:

- Two 1.3 mm screws
- One 1.7 mm screw
- One 3.25 mm screw

⚠ It is especially important to keep track of your screws in this step for reassembly. Accidentally using the 3.25 mm screw or the 1.7 mm screw in the bottom right hole will result in significant damage to the logic board causing the phone to no longer boot properly.

⚠ Be careful not to over-tighten the screws. If they don't fit easily when you are securing them, they may be the wrong size, don't force them.

Step 13



- Remove the front panel assembly cable bracket from the logic board.

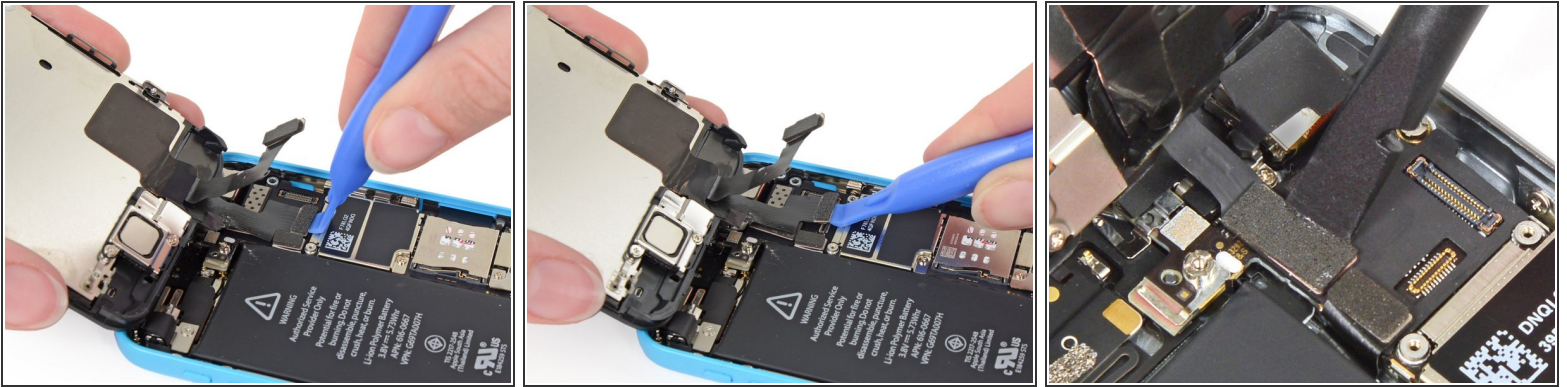
Step 14



- Use a plastic opening tool to disconnect the front-facing camera and sensor cable connector.

⚠ Be sure to **only** pry up on the connector, and not on the socket on the logic board.

Step 15

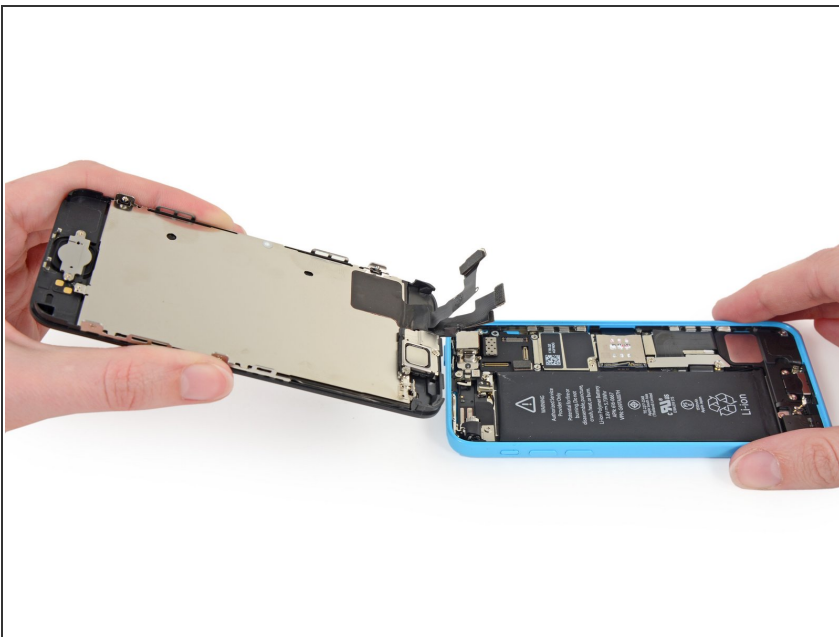


- Use a plastic opening tool to disconnect the LCD cable connector.

⚠ The LCD and Digitizer connectors are on the same cable assembly, so prying the LCD connector up should disconnect both connectors. Double check that the two cables are fully disconnected before removing the display.

- ☑ When reassembling your phone, the LCD cable may pop off its connector. A blank screen, or white lines on the display could be caused by a loose connection. Should this happen, reconnect the cable and power cycle your phone. The best way to power cycle your phone is to disconnect and reconnect the battery.

Step 16



- Remove the front panel assembly from the rear case.

Step 17



- i** Shut your phone down completely before removing the SIM card and tray.
- Insert a SIM card eject tool or a paperclip into the small hole in the SIM card tray.
 - Press the SIM card eject tool inwards to eject the tray.
 - This may require a significant amount of force.

Step 18



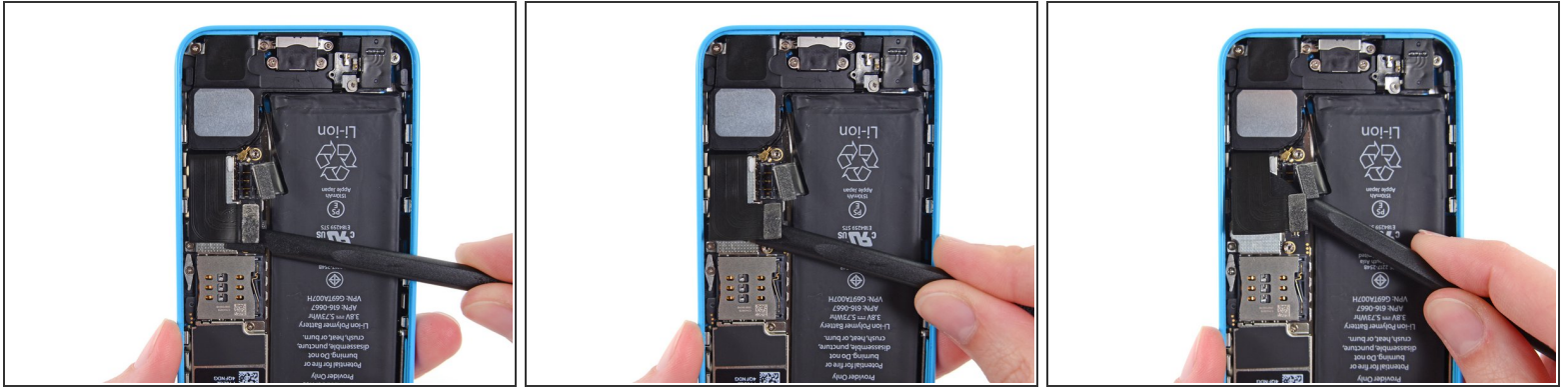
- Remove the SIM Card tray assembly from the iPhone.
- ✪ During reassembly, ensure that the SIM card is in the proper orientation relative to the tray.

Step 19



- Disconnect the Lightning connector ribbon cable from its socket on the logic board.

Step 20



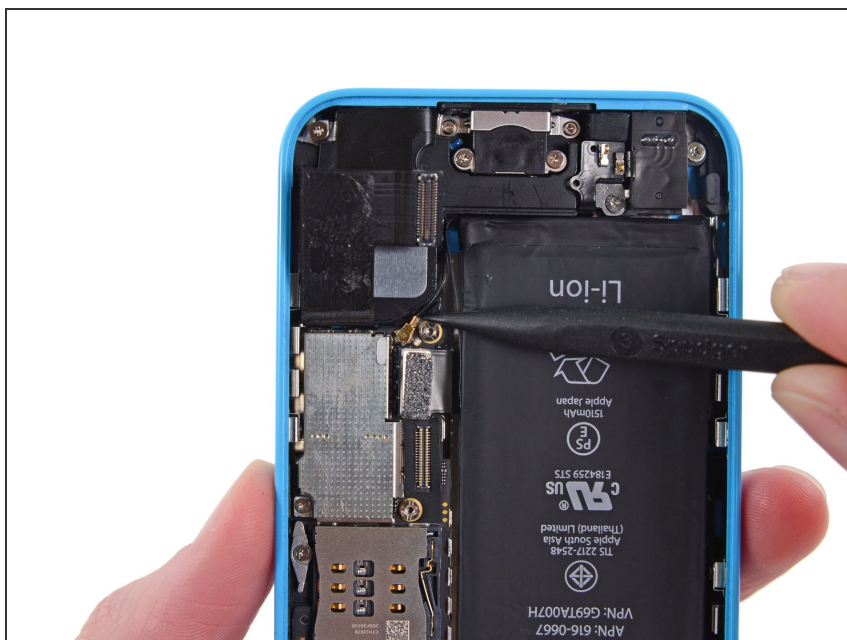
- The Lightning connector cable is lightly adhered to a shield on the logic board. Use the flat end of a spudger to gently peel the cable up.

Step 21



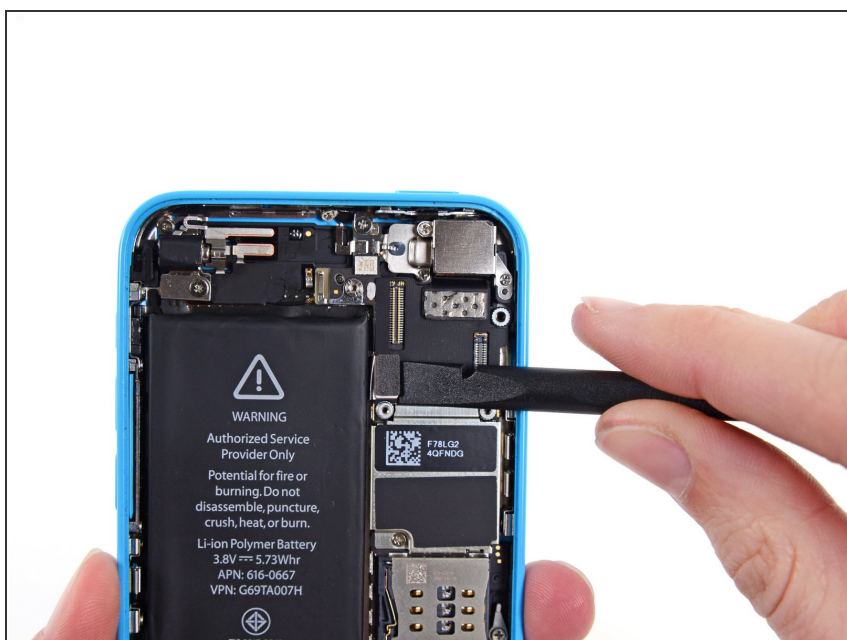
- Fold the cable up out of the way of the logic board.

Step 22



- Disconnect the antenna connector from the base of the logic board.

Step 23



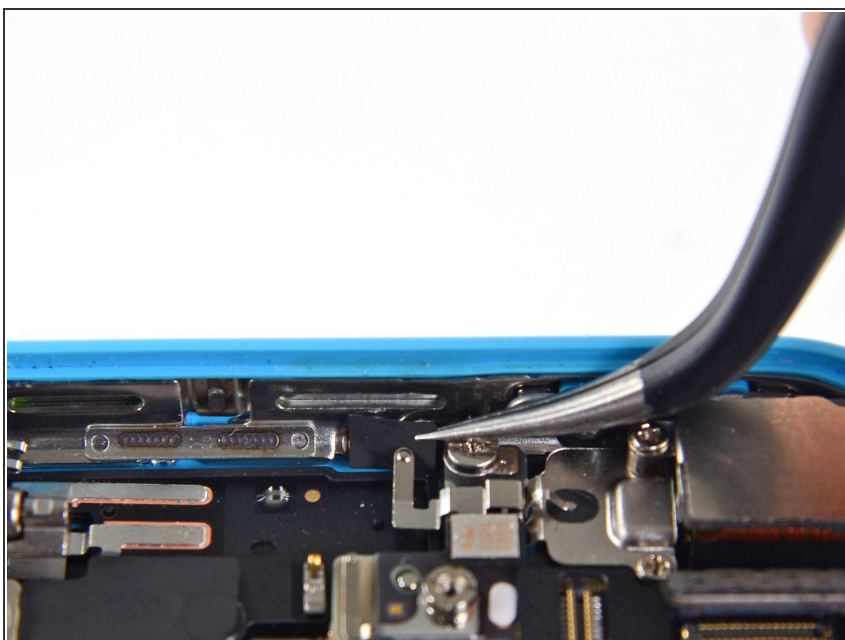
- Use the flat end of a spudger to disconnect the audio control cable connector from its socket on the logic board.

Step 24



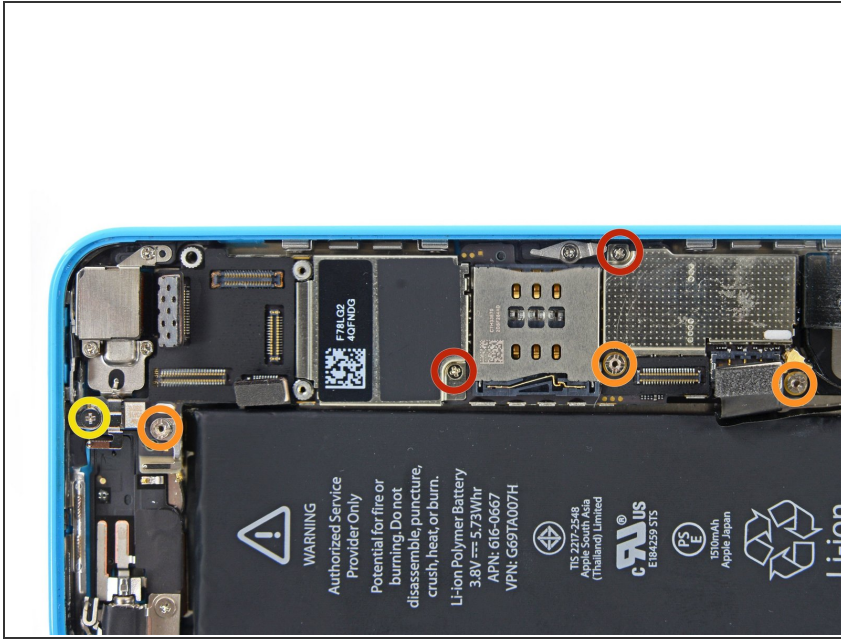
- Disconnect the rear facing camera cable connector from its socket on the logic board.

Step 25



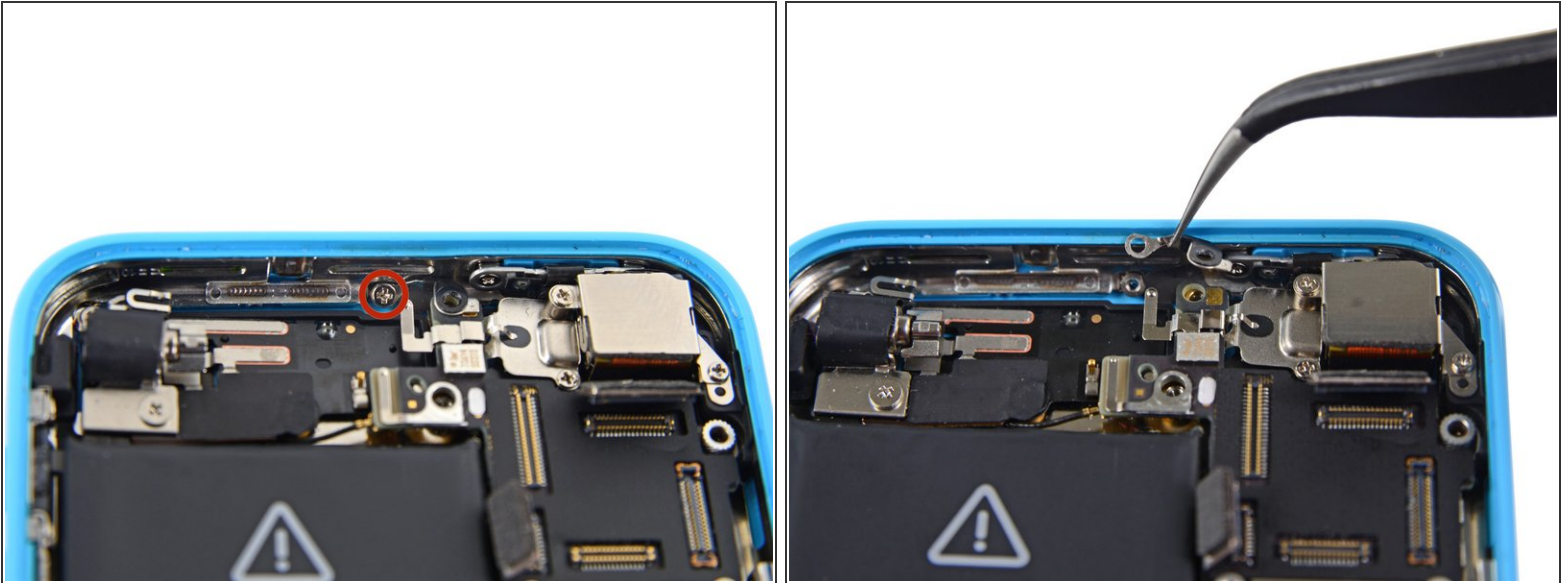
- A small piece of tape may obscure the logic board grounding clip. If so, use a pair of tweezers to remove the tape.

Step 26



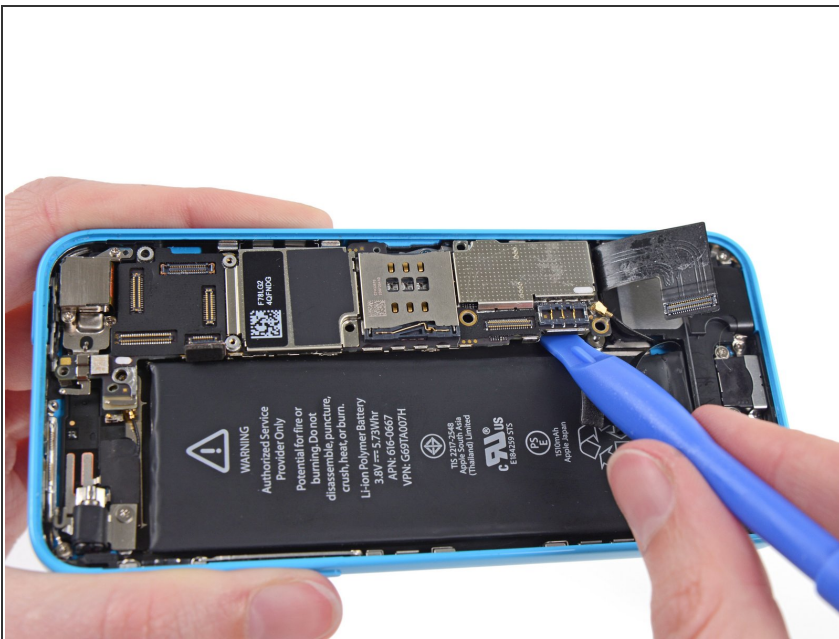
- Remove the following screws securing the logic board to the rear case:
 - Two 2.3 mm Phillips screws
 - Three 2.7 mm standoff screws
 - ⓘ These screws have a Phillips bit pattern, but we found the best removal tool to be a 2.5 mm flathead driver.
 - ☑ When putting the standoffs back in, it helps to use the tip of a spudger like a screwdriver to get them started.
 - One 2.5 mm Phillips #000 screw

Step 27



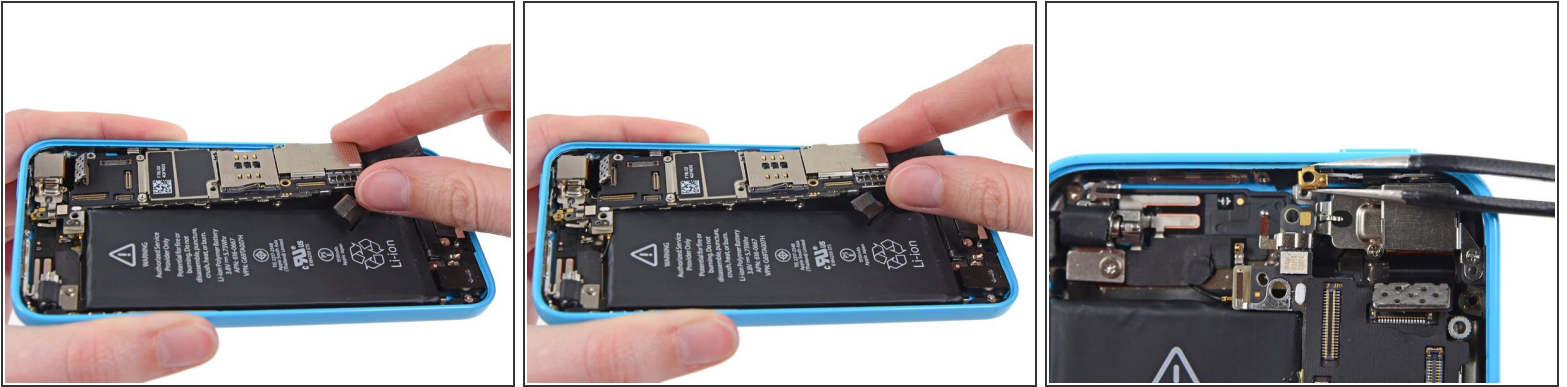
- Remove the 1.2 mm Phillips #000 screw securing the grounding clip to the top side-wall.
- Use tweezers to remove the logic board grounding clip.

Step 28



- Use a plastic opening tool to gently lift the lower end of the logic board up from the rear case enough for you to grab it with your fingers.

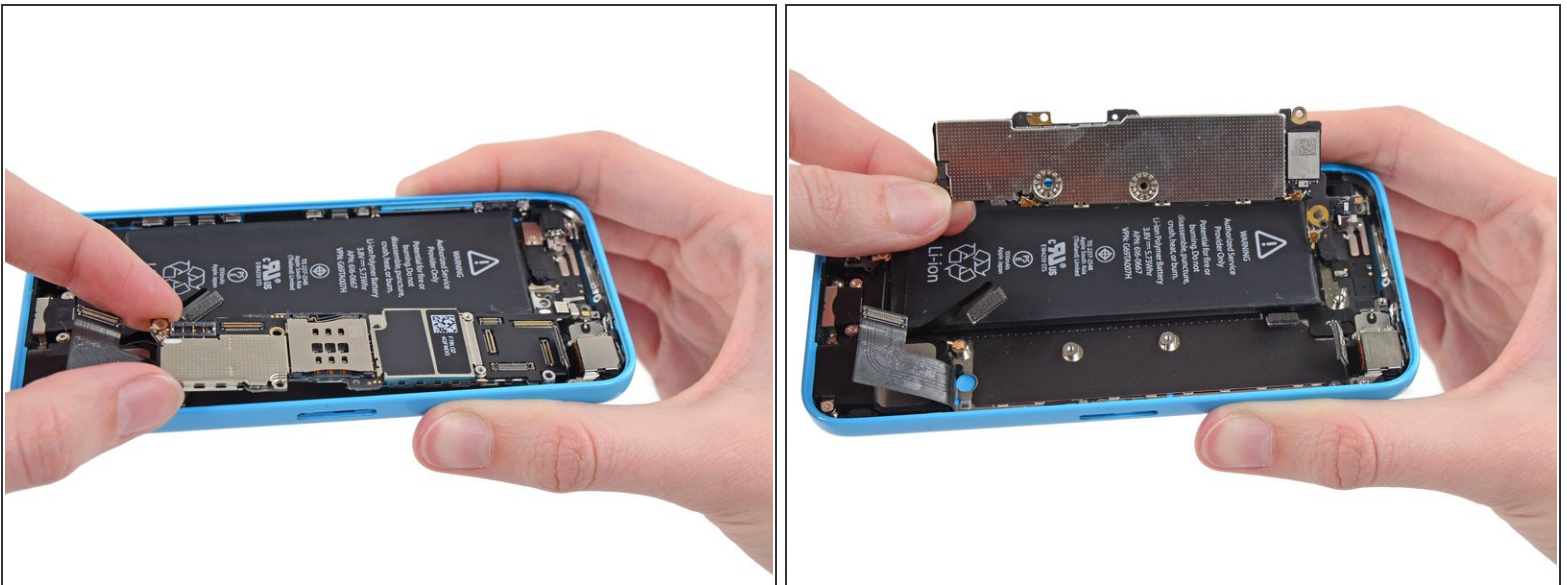
Step 29



- Pull the logic board away from the rear-facing camera just enough to expose the gold contact cap under the top end of the board.

⚠ Remove the gold-colored contact cap from the threaded post in the rear case, and set it aside.

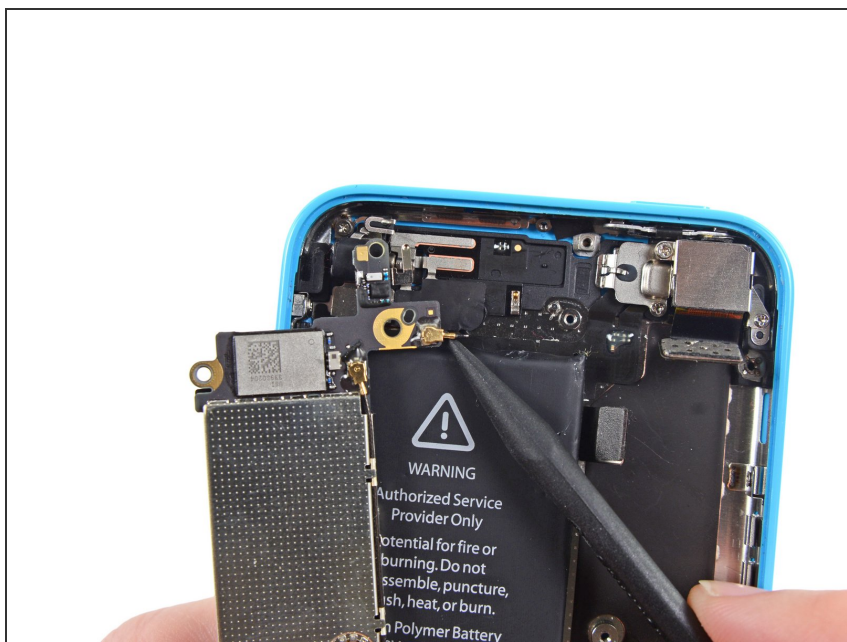
Step 30



- Flip the logic board up toward the volume control buttons to expose the antenna connector.

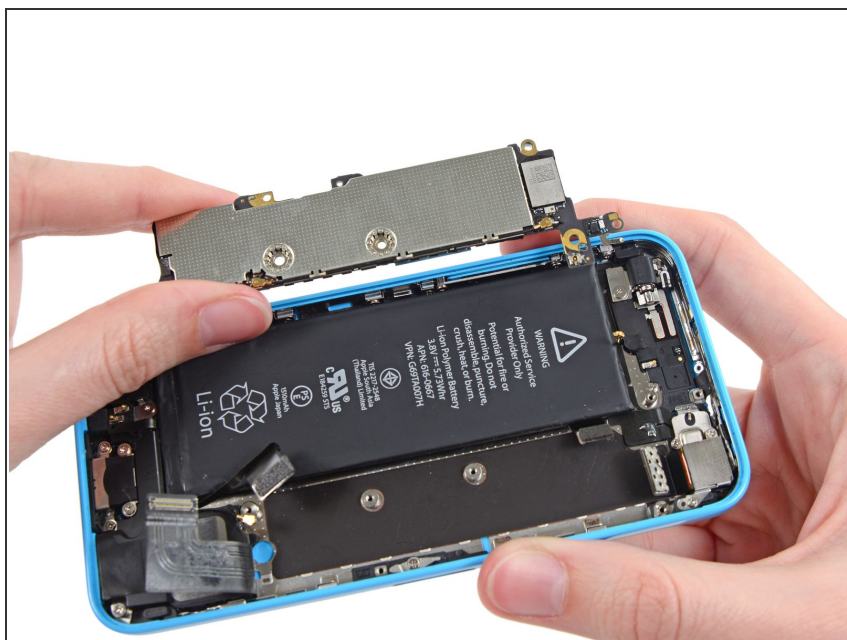
⚠ Do not try to remove the logic board from the rear case yet, as it is still connected by an antenna cable on the back.

Step 31



- Disconnect the antenna connector from the back of the logic board.

Step 32



- Remove the logic board from the iPhone.

To reassemble your device, follow these instructions in reverse order.