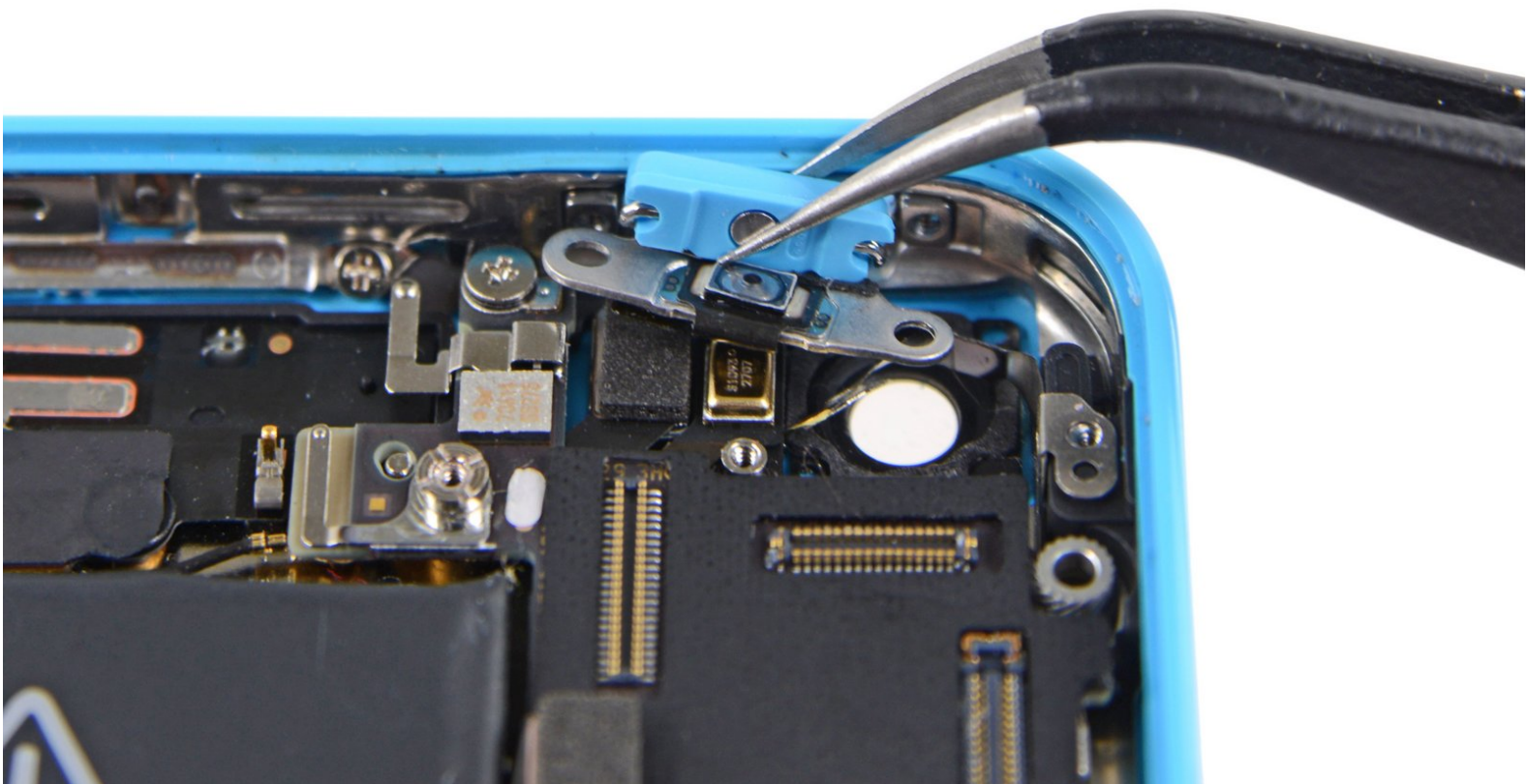




iPhone 5c Power Button Replacement

Written By: Dozuki System



INTRODUCTION

Use this guide to remove the power/sleep button from your iPhone 5c.



TOOLS:

- [P2 Pentalobe Screwdriver iPhone](#) (1)
- [Phillips #000 Screwdriver](#) (1)
- [iFixit Opening Tools](#) (1)
- [Suction Handle](#) (1)
- [Spudger](#) (1)
- [Tweezers](#) (1)
- [2.5 mm Flathead Screwdriver](#) (1)



PARTS:

- [iPhone 5c Case Button Set](#) (1)

Step 1 — Power Button



- If your display glass is cracked, keep further breakage contained and prevent bodily harm during your repair by taping the glass.
- Lay overlapping strips of clear packing tape over the iPhone's display until the whole face is covered.
 - ⓘ This will keep glass shards contained and provide structural integrity when prying and lifting the display.

⚠ Wear safety glasses to protect your eyes from any glass shaken free during the repair.

Step 2



⚠ Before you proceed, discharge your iPhone battery below 25%. A charged lithium-ion battery can catch fire and/or explode if accidentally punctured.

- Power off your iPhone before beginning disassembly.
- Remove the two 3.8 mm Pentalobe screws next to the Lightning connector.

Step 3 — iSclack Opening Procedure



i The next two steps demonstrate using the , a great tool for safely opening the iPhone 5c that we recommend for anyone doing more than one repair on an iPhone 5, 5s, or 5c. **If you aren't using the iSclack, skip to [\[invalid guide link\]](#).**

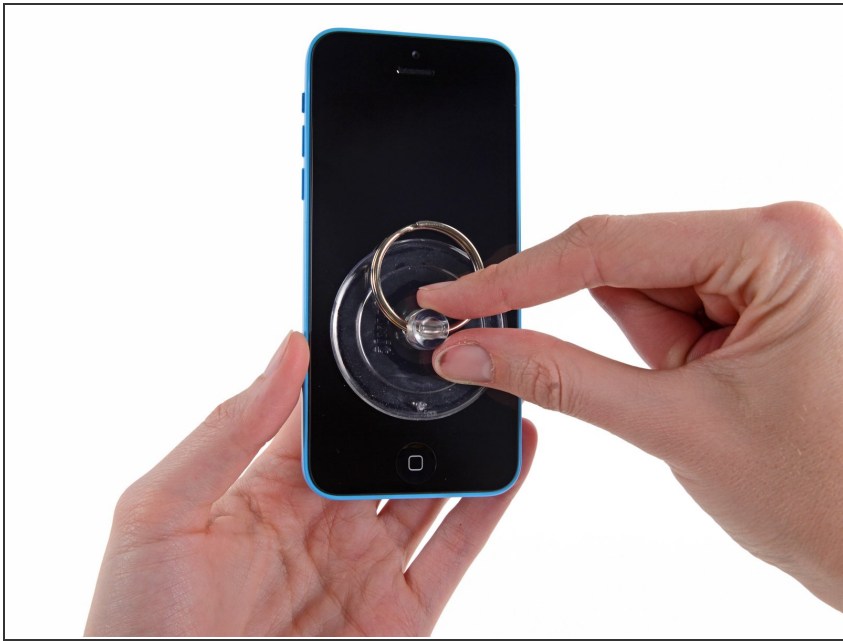
- Close the handle on the iSclack, opening the suction-cup jaws.
- Place the bottom of your iPhone in between the suction cups, against the plastic depth gauge.
 - The top suction cup should rest just above the home button.
- Open the handles to close the jaws of the iSclack. Center the suction cups and press them firmly onto the top and bottom of the iPhone.

Step 4



- Hold onto your iPhone securely and close the handle of the iSclack to separate the suction cups, pulling the front panel up from the rear case.
- The iSclack is designed to safely open your iPhone just enough to separate the pieces, but not enough to damage any cables.
- ⓘ Peel the two suction cups off your iPhone.
- **Skip the next three steps and continue on to [\[invalid guide link\]](#).**

Step 5 — Manual Opening Procedure



- Press a suction cup onto the screen, just above the home button.
- ⓘ Be sure the cup is completely on the screen to get a tight seal.

Step 6



- i** Make sure the suction cup is firmly attached to the front panel assembly.

 - While holding the iPhone down with one hand, pull up on the suction cup to slightly separate the front panel assembly from the rear case.
- i** Take your time and apply firm, constant force. The display assembly is a much tighter fit than most devices.

 - With a plastic opening tool, begin to gently pry the rear case down, away from the display assembly, while you pull up with the suction cup.
- i** There are several clips attaching the front panel assembly to the rear case, so you may need to use a combination of the suction cup and plastic opening tool to free the front panel assembly.

Step 7



- Pull the plastic nub to release the vacuum seal on the suction cup.
- Remove the suction cup from the display assembly.

Step 8



- Lift the home button end of the front panel up to gain access to the connectors near the top of the phone.
- Open the display to about a 90° angle, and lean it against something to keep it propped up while you're working on the phone.
 - In a pinch, you can use an unopened canned beverage to hold the display.
- Add a rubber band to keep the display securely in place while you work. This prevents undue strain on the display cables.

Step 9



- Remove the two 1.6 mm Phillips #000 screws securing the metal battery connector bracket to the logic board.

Step 10



- Remove the metal battery connector bracket from the iPhone.

Step 11



- Use the flat edge of a spudger to pry the battery connector up off the logic board.

Step 12



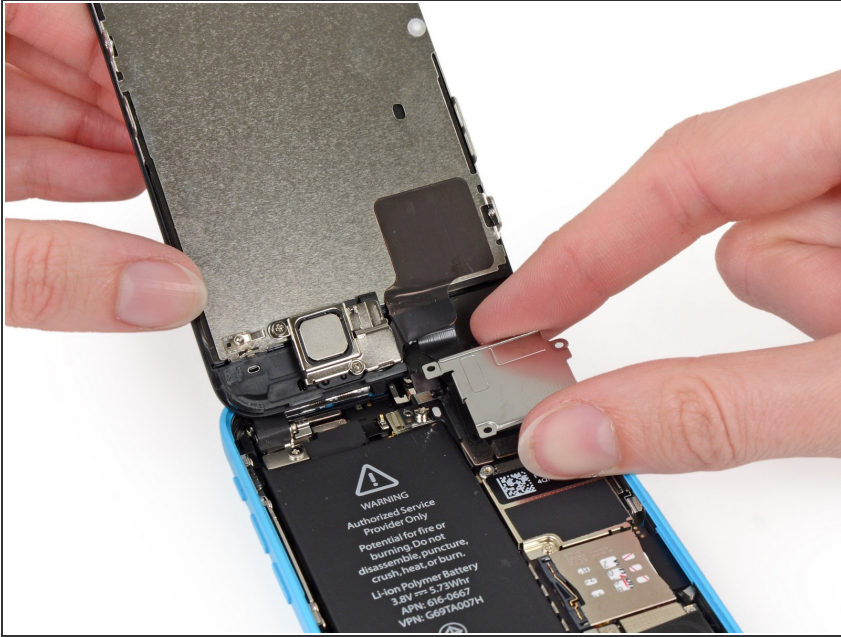
- Remove the following Phillips #000 screws securing the front panel assembly cable bracket to the logic board:

- Two 1.3 mm screws
- One 1.7 mm screw
- One 3.25 mm screw

⚠ It is especially important to keep track of your screws in this step for reassembly. Accidentally using the 3.25 mm screw or the 1.7 mm screw in the bottom right hole will result in significant damage to the logic board causing the phone to no longer boot properly.

⚠ Be careful not to over-tighten the screws. If they don't fit easily when you are securing them, they may be the wrong size, don't force them.

Step 13



- Remove the front panel assembly cable bracket from the logic board.

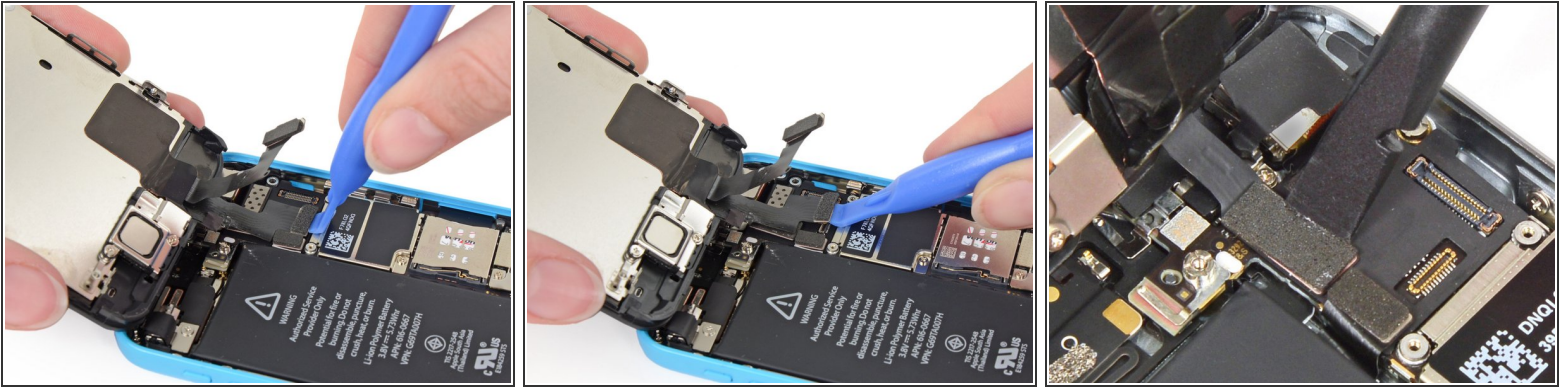
Step 14



- Use a plastic opening tool to disconnect the front-facing camera and sensor cable connector.

⚠ Be sure to **only** pry up on the connector, and not on the socket on the logic board.

Step 15

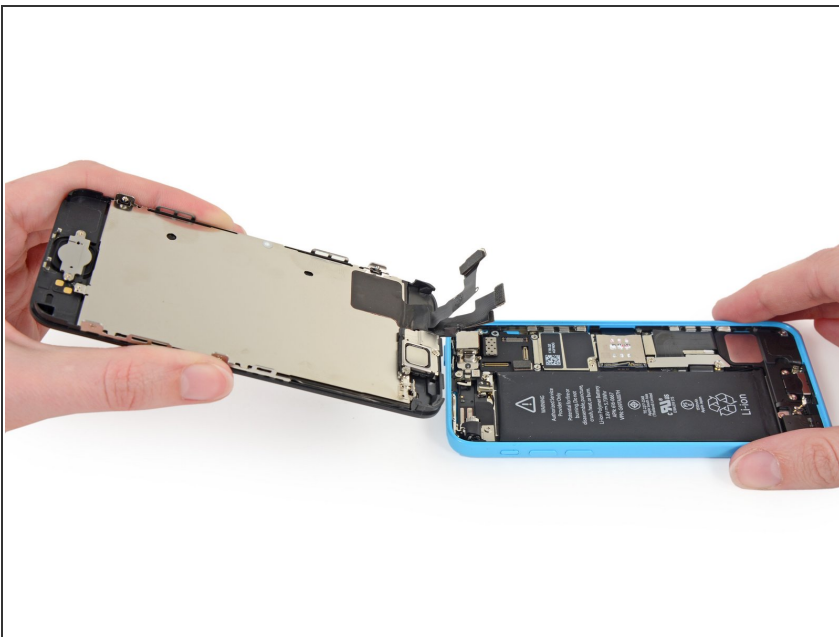


- Use a plastic opening tool to disconnect the LCD cable connector.

⚠ The LCD and Digitizer connectors are on the same cable assembly, so prying the LCD connector up should disconnect both connectors. Double check that the two cables are fully disconnected before removing the display.

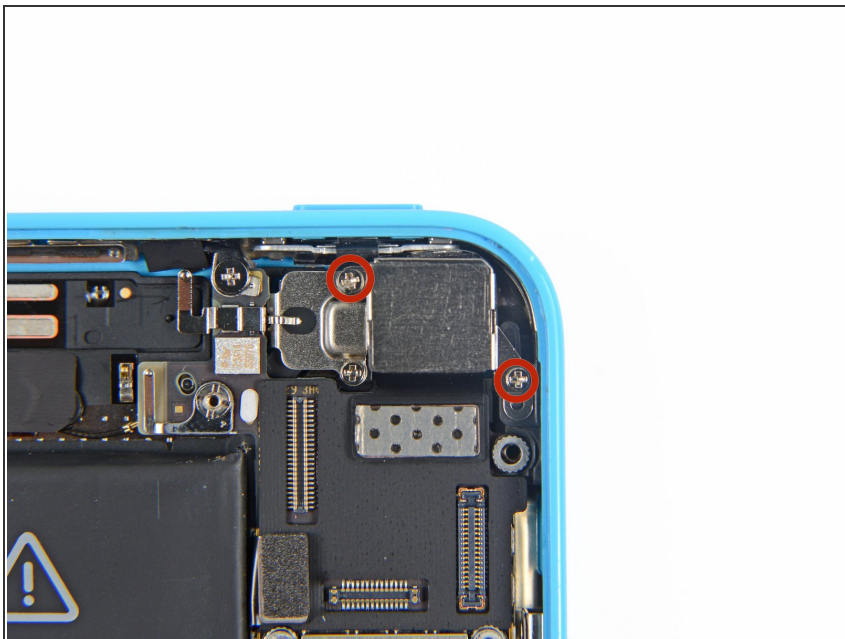
- ☑ When reassembling your phone, the LCD cable may pop off its connector. A blank screen, or white lines on the display could be caused by a loose connection. Should this happen, reconnect the cable and power cycle your phone. The best way to power cycle your phone is to disconnect and reconnect the battery.

Step 16



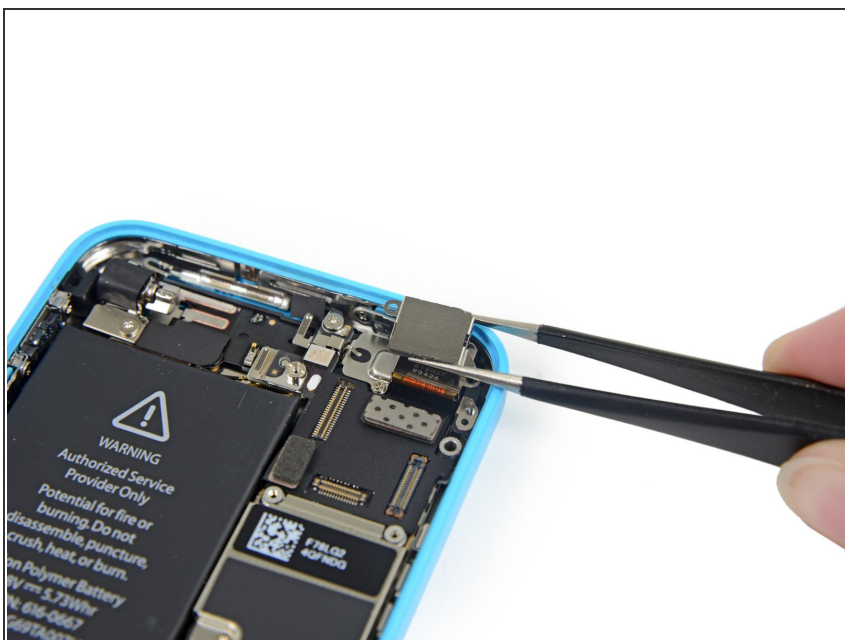
- Remove the front panel assembly from the rear case.

Step 17



- Remove the two 1.5 mm Phillips #000 screws securing the rear-facing camera to the rear case.

Step 18



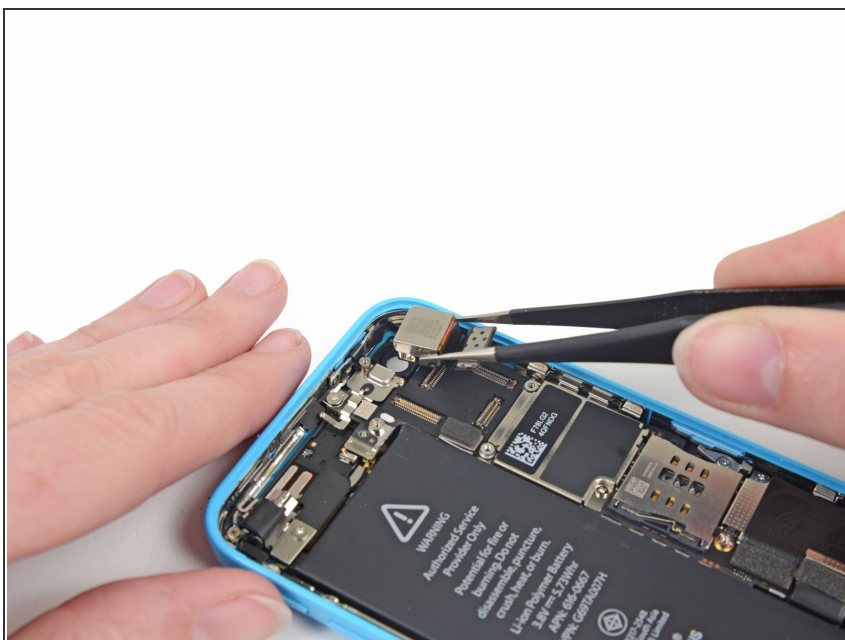
- Remove the rear-facing camera bracket from the iPhone.

Step 19



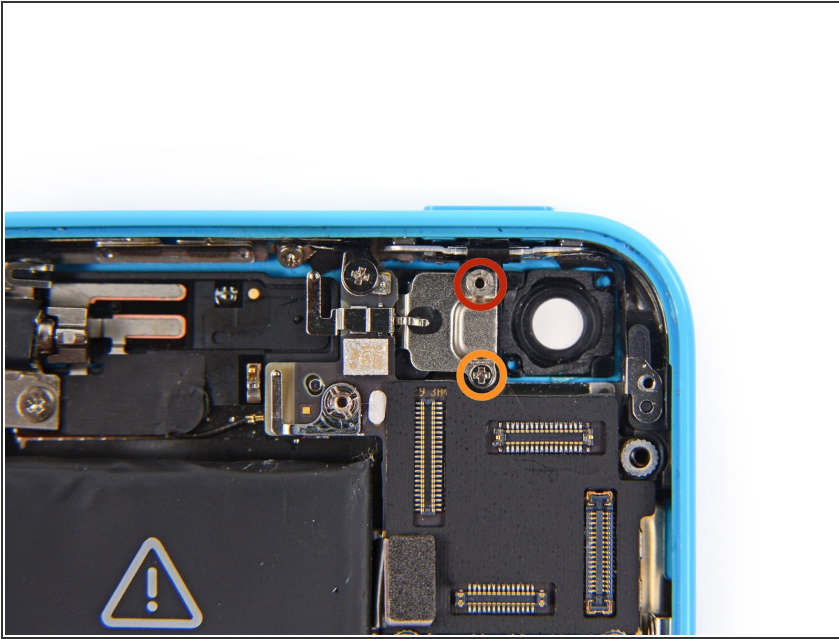
- Use the flat edge of a spudger to pry the rear-camera connector up off the logic board.

Step 20



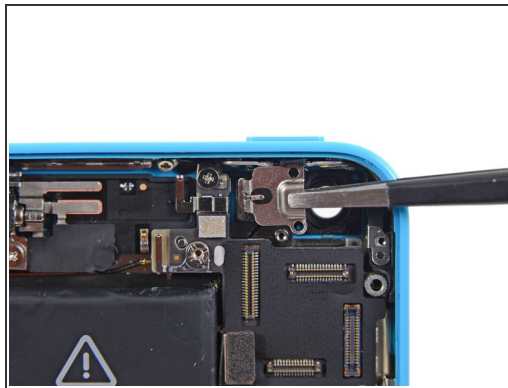
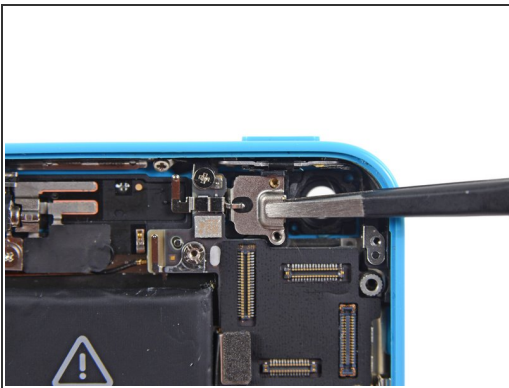
- Remove the rear-facing camera from the iPhone.

Step 21



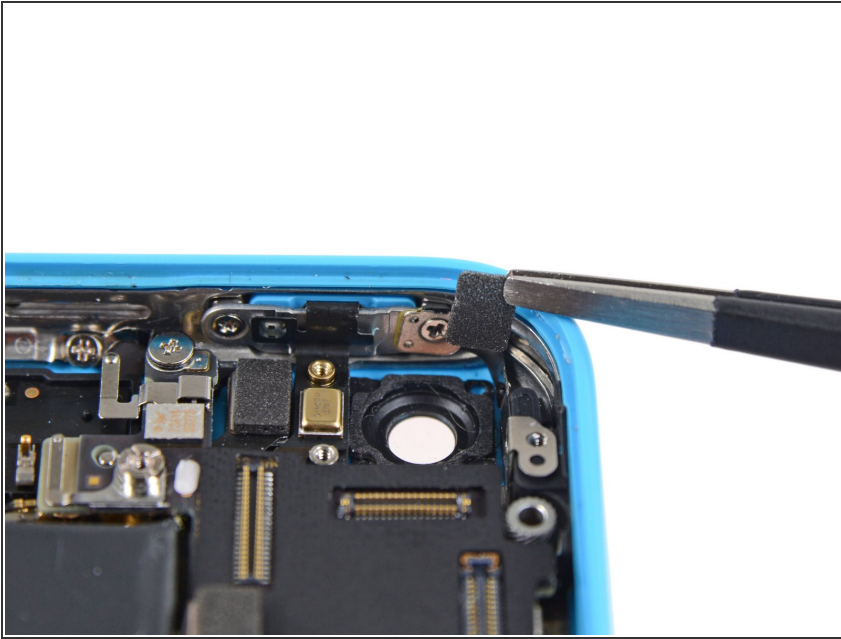
- Remove the following screws securing the upper assembly contact bracket to the rear case:
 - 3.0 mm standoff screw
 - ⓘ Use a 2.5 mm flathead screwdriver for this screw.
 - 1.5 mm Phillips #000 screw

Step 22



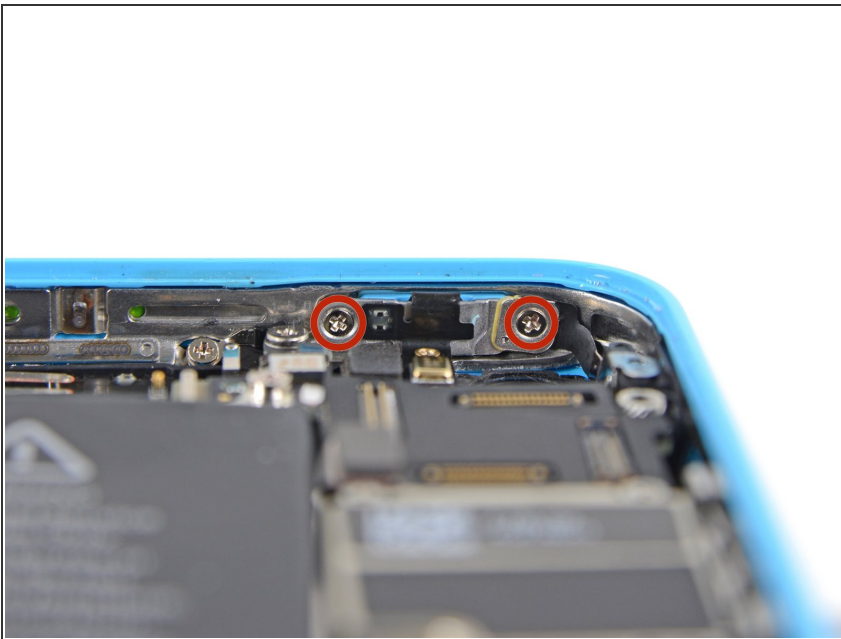
- Remove the upper assembly contact bracket from the rear case.
- A small rubber bumper may fall off the top of the bracket—take care not to lose it.

Step 23



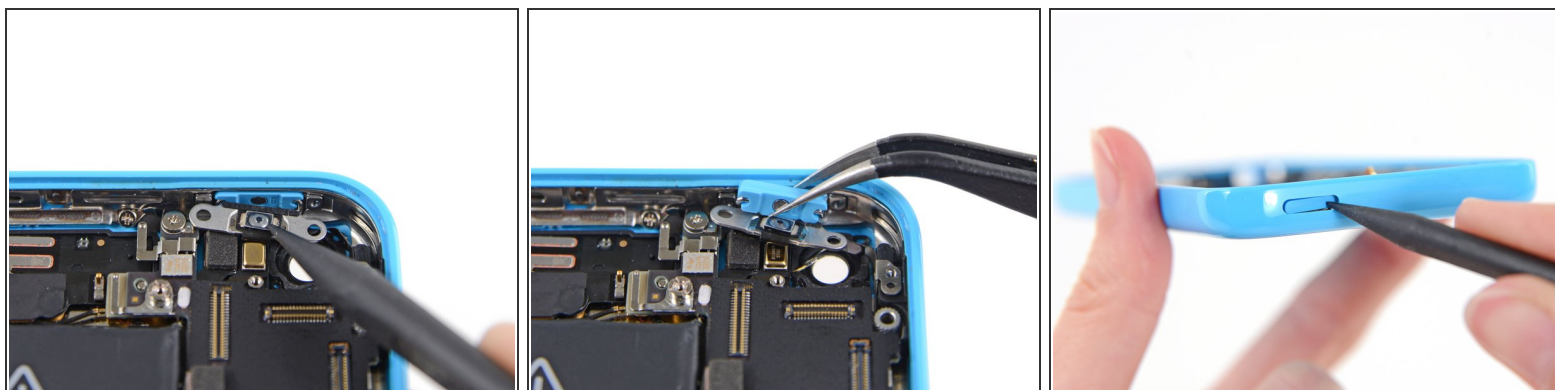
- Remove the small foam tape from inside the rear camera's cavity.

Step 24



- Remove the two 1.4 mm Phillips #000 screws securing the power/sleep button bracket.

Step 25



- Use the pointed end of a spudger to gently fold the power/sleep button bracket down from the top of the rear case.
- Use tweezers to grab and remove the button.
 - ✦ For reassembly, note the orientation—the metal bar should be flush with the bottom of the button. Check if your home button has the metal hinge, if not you will need to transfer it from your current home button.
- ⓘ If you can't get a hold on the power button from inside the case, use a spudger to slightly push it in from the outside.

To reassemble your device, follow these instructions in reverse order.