



Samsung Galaxy S5 microSD Card Replacement

Written By: Dozuki System



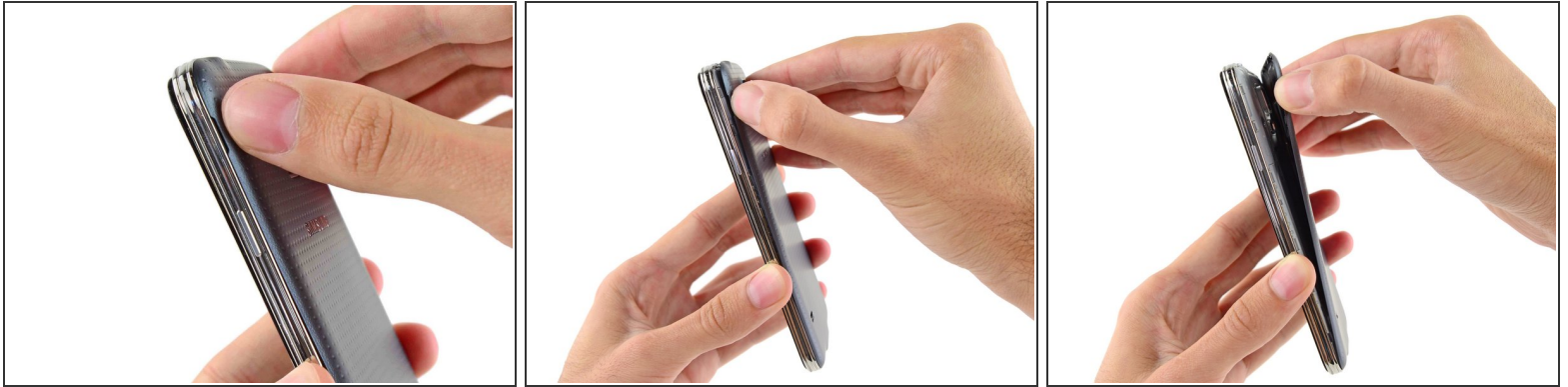
INTRODUCTION

Use this guide to replace the microSD card.

TOOLS:

- [iFixit Opening Tools](#) (1)
-

Step 1 — microSD Card



- Insert a fingernail or plastic opening tool into the divot to the left of the rear-facing camera.
- Gently pry and twist the flexible rear cover off the back of the phone.

Step 2



- Insert a fingernail or plastic opening tool into the recess in the bottom right corner of the battery and lift upward.
- Remove the battery away from the phone.

Step 3



- Using a fingertip, pull the microSD card straight down out of its slot.
- Remove the microSD card from the phone.

To reassemble your device, follow these instructions in reverse order.