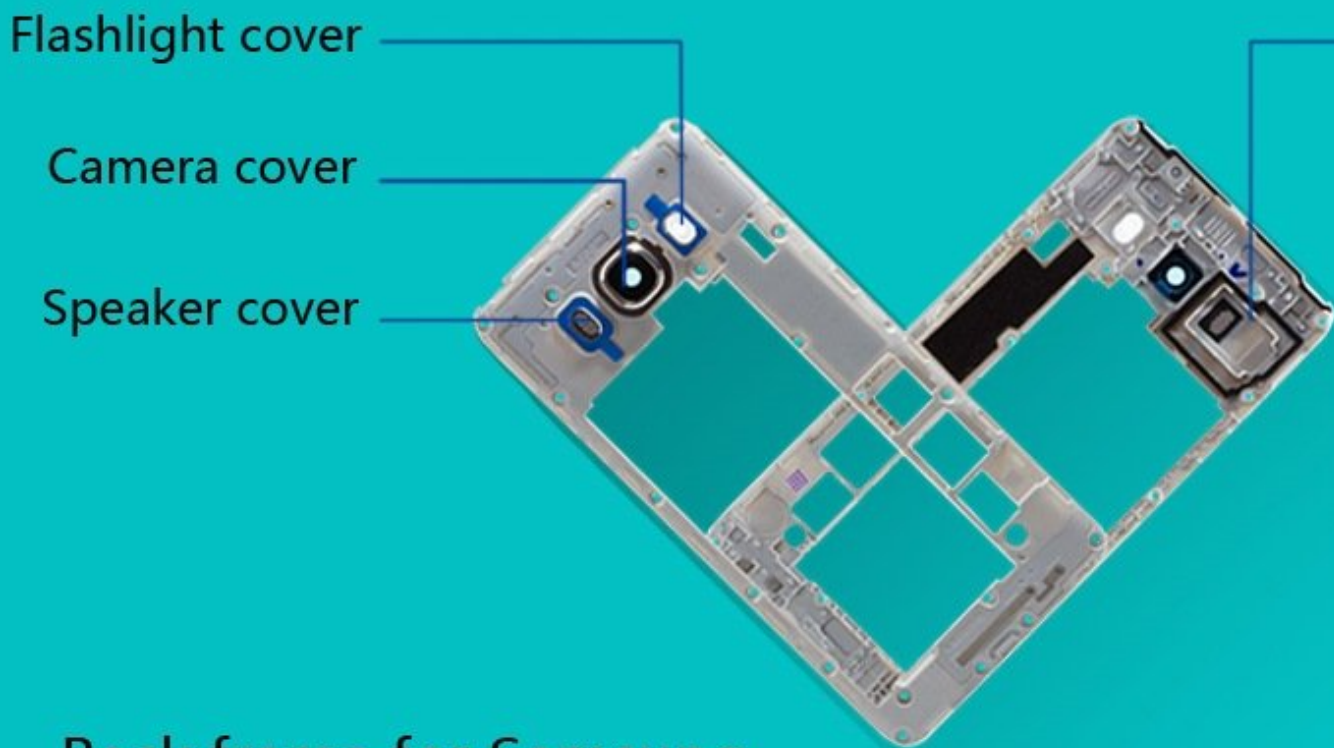




Samsung Galaxy J5 (2016) Back Frame Replacement

Written By: Dozuki System



Back frame for Samsung
Galaxy J5 (2016)

INTRODUCTION

[video: <https://www.youtube.com/watch?v=4ajl-xJGLX4>]

After a long time usage, problems may occur on camera cover, flashlight cover, replacing the back frame will solve the problems. And if you uncarefully break the back frame when you install SIM cards and SD cards, DIY to fix it.

This video shows you how to repair Samsung Galaxy J5 (2016) Back Frame.



TOOLS:

- [plastic opening card](#) (1)
- [Phillips #0 Screwdriver](#) (1)



PARTS:

- [Samsung J5 2016 Back Frame](#) (1)

Steps:

Step1 Open the back cover;

Step2 Remove the back frame;

Step3 Install a new back frame;

Step4 Fasten the back cover.